

161-A

T. 16S., R. 26E.  
Section 31  
S 1/16 on N-S C.L.

CERTIFIED RECORD OF LAND CORNER MONUMENTATION  
(Reference FSH 5681.65)

History of original corner establishment:

S. 1/16 on N-S Center line.  
Interior corner, not established previously.

Description of corner evidence found:

Established by single proportionment between  $\frac{1}{2}$  section corner established in B.L.M. Dependent Resurvey of 1960, and the  $\frac{2}{3}$  previously established during the course of this survey

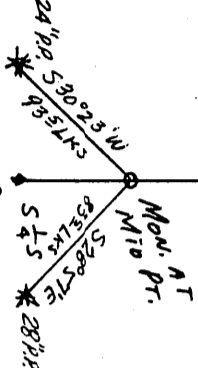
Description of monument and accessories | established to perpetuate the original location of this corner

Monument consists of a 2 1/2 inch brass disk welded to the top of a 2 inch galvanized iron pipe, approximately 30 inches in length, buried approximately 20 inches in the ground with a mound of rock set around the base. Flat piece of steel is welded to the base of the monument.  
Disk stamped with metal dies as follows  
T16S C R26E  
S 1 | S 31  
ORE 16 C  
350 1964  
From which a Pine tree 24 inches DBH bears  
S. 300 23' W. a distance of 93.5 links;  
and from which a Pine tree 28 inches DBH bears  
S 280 57' E. a distance of 83.5 links; both trees being scribed 1/16 S B T

State of Oregon )  
County of Harney ) ss.

I, Marcelinus A. Palmer do hereby certify that on the 15th day of January, 1964, I found evidence of an established monument as described hereon or the south 1/16 corner on center line of Section 31, Township 16S., Range 26E., Meridian WILLAMETTE

as described hereon, and that from this evidence I established a new monument and accessories as described hereon to perpetuate the original location of this corner.  
\*DIAGRAM



Dated at Burns, Oregon this 16th day of November, 1964  
Signature: Marcelinus A. Palmer  
Title: Land Surveyor  
Registration No. 350

State of Oregon )  
County of Harney ) ss.  
On this 16th day of November, 1964 before me, a notary public in and for said state, personally appeared

Marcelinus A. Palmer, known to me to be the person whose name is subscribed to the within instrument and who acknowledged to me that he executed the same.



Commission expires 9/18/65  
Form R6-5680-182

Office of ..... County of .....  
State of ....., I hereby certify that the within instrument was filed in this office for record on the ..... day of ....., 19....., at ..... o'clock .....m., (signed) ..... by ..... (DEPUTY)