

No.

FOR

TOWNSHIP

RANGE

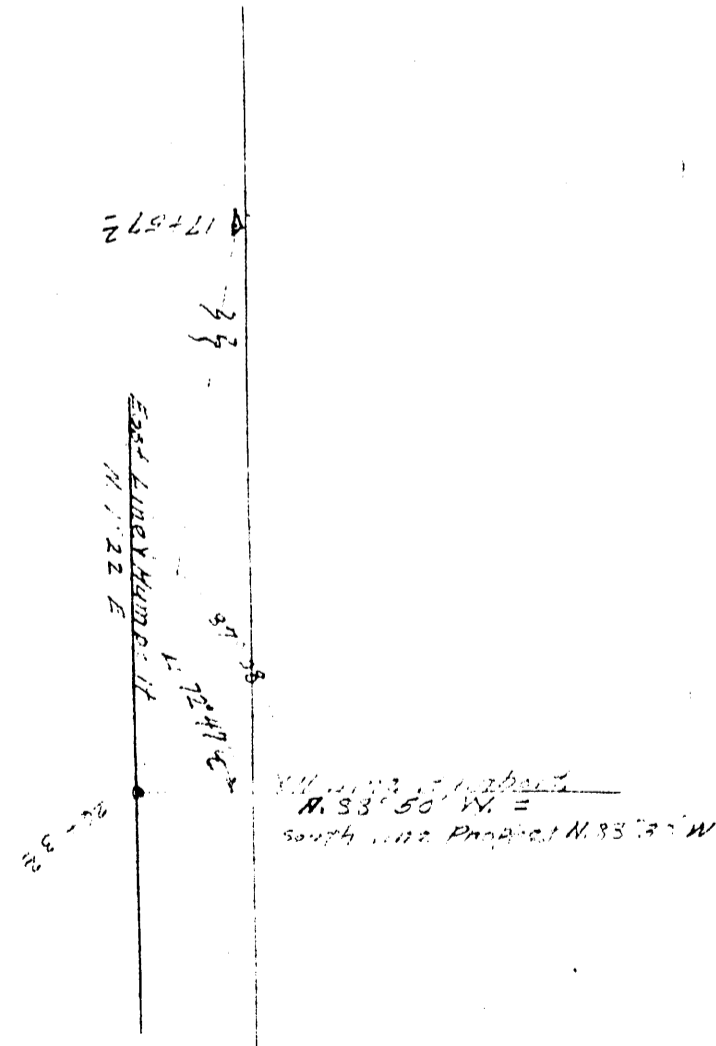
WILL. MER.

Project

Station	Dist	RT	Angle	Remarks
26+53.2				S.E. Corner of Proprietor's 1/4 Sec. 36, T.13 S., R.31 E., S. 1/4
17+57.2	Δ	18° 27' 1/2"		
14+50.2	Δ	8° 21' 1/2"		S.E. Corner of Humboldt
9+15.2	Δ	11° 46' 1/2"		
17+57.2	Δ	22° 25'		
26+53.2				By corner S.E. T. 13 S., R. 31 E., S. 1/4

26+53.2
S.E. Corner of
Proprietor's 1/4 Sec. 36,
T.13 S., R.31 E., S. 1/4

14+50.2
S.E. Corner
Humboldt



FIELD NOTES

Notes covering traverse run from South 1/4 corner of S. 36, T. 13 S., R. 31 E., to initial point of Proprietor's addition to Canyon City, Oregon

Land Survey

STATE OF OREGON
County of Grant

#19437

I hereby certify that the within instrument was filed in my office for record on this 9 day of

May, A. D. 1950

at _____ o'clock _____ M., and is duly recorded in

Book 1 of *Surveyors Record* at Page 94 so inclusive.

Witness my hand and official seal
JOHN LIVEIRA, County Clerk

By *Antonia Cordeiro*

Fees \$ 1.00