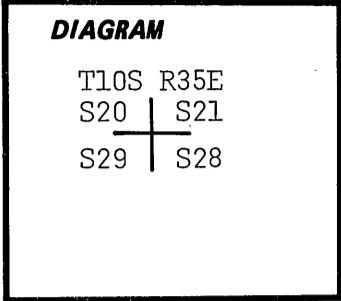


CERTIFIED RECORD OF LAND CORNER MONUMENTATION

Index File No. R-9

History of original corner establishment:

Corner was originally established by Herman D. Gradon under G.L.O. contract No 416 during October, 1881. Surveyor General's notes state: "Set a basalt stone 12x8x6 ins 8 ins in the ground for cor to secs. 20, 21, 28 and 29. Marked with 2 notches on S and 4 notches on E edges: From which a pine 20 ins. diam. bears N50°E, 43 lks. dist. marked T10SR35ES21 BT. A fir 15 ins diam. bears S45°E, 22 lks. dist. marked T10SR35ES28 BT. A fir 6 ins. diam. bears S35°W, 20 lks. dist. marked T10SR35ES29 BT. A fir 12 ins diam. bears N55°W, 12 lks. dist. marked T10SR35ES20 BT."

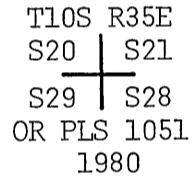


Description of corner evidence found:

Found set 12x9x8 inch stone, notched 2 on S and 4 on E edges, from which: A 30" pine bears N49°E, 49.5 ft., full scribe. A down and rotten fir bears S55°W, 15.6 ft., full scribe. A 16" fir bears S15°W, 12.0 ft., full scribe. A dead 16" fir bears N33°W, 7.4 ft., full scribe. (Messed up record bearings, all but pine).

Corner is 100' south of track road and 100' west of the main road.

Description of monument and accessories | established to perpetuate the original location of this corner:



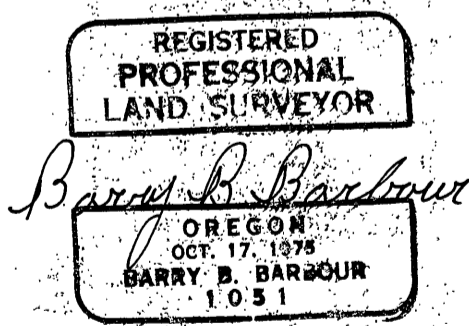
At the center of the above described point, set 2 1/2" X 30" galvanized pipe and brass cap marked: Set pipe 26" in the ground and mound of stone alongside. Small mound of stone around to cap.

From which by magnetic declination of N20°E: A 10" fir bears S84°E, 46.4 ft. scribed T10SR35ES28 BT. A 9" fir bears N03°W, 32.4 ft. scribed T10SR35ES20 BT. Painted balzes red and 6" red band around. Placed 54-3s, 54-4s and brass washers stamped PLS 1051 on BTs. Placed 54-4 on steel fence post 5' east of the corner. Went back on 8-21-80 and cut dead NW BT. and counted 40 years. 1975 recovery said "green". Cut SW BT and counted 100 years from time blazed. New BT. is a 12" fir bearing S42°W, 18.7 ft. scribed T10SR35ES29 BT.

I hereby certify that the above corner monument was reestablished as herein described.

Witnesses: Robert Boling
Larry Shirley

July 24, 1980



Office of... County Surveyor County of... Grant
State of... Oregon I hereby certify that the within instrument was filed in this office
for record on the 20th 23 day of January 1981
Robert D. Boyett by
(COUNTY OFFICIAL) (DEPUTY)