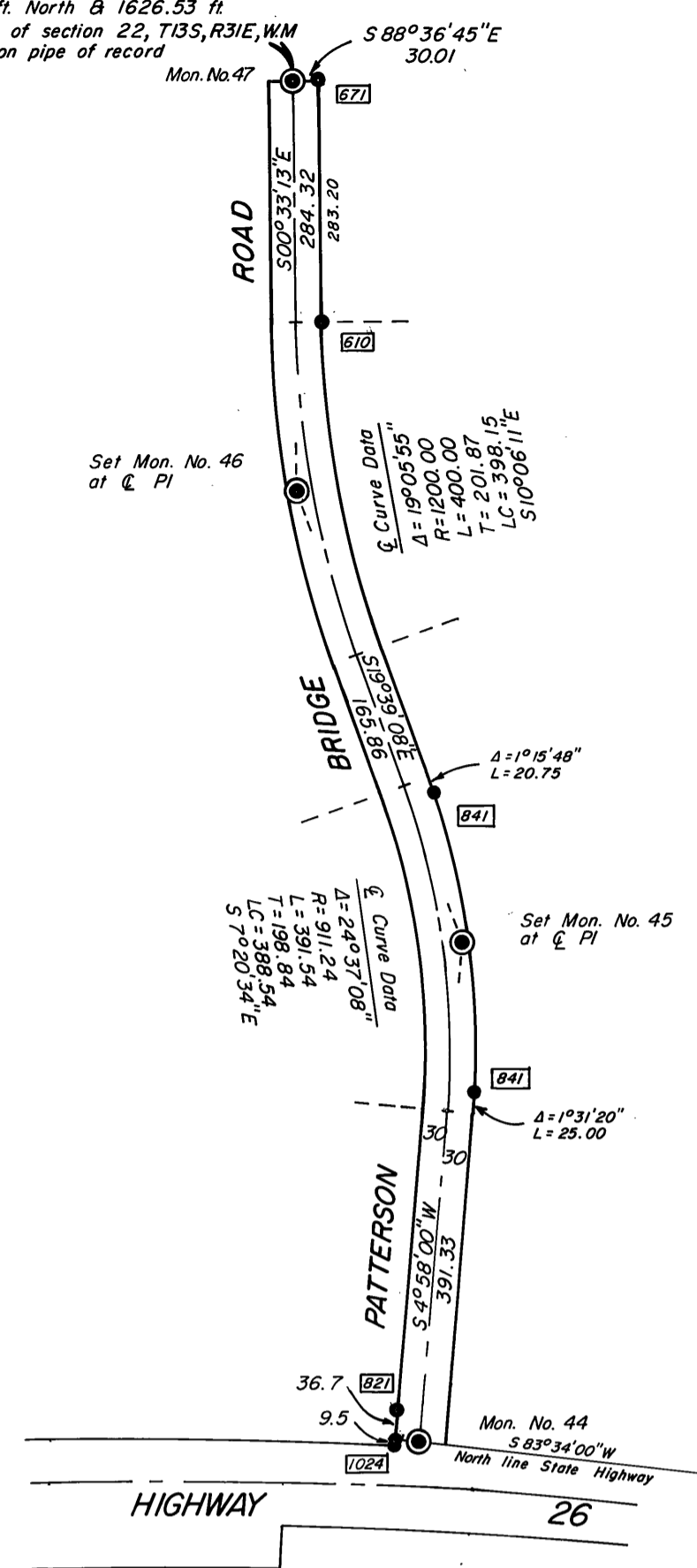
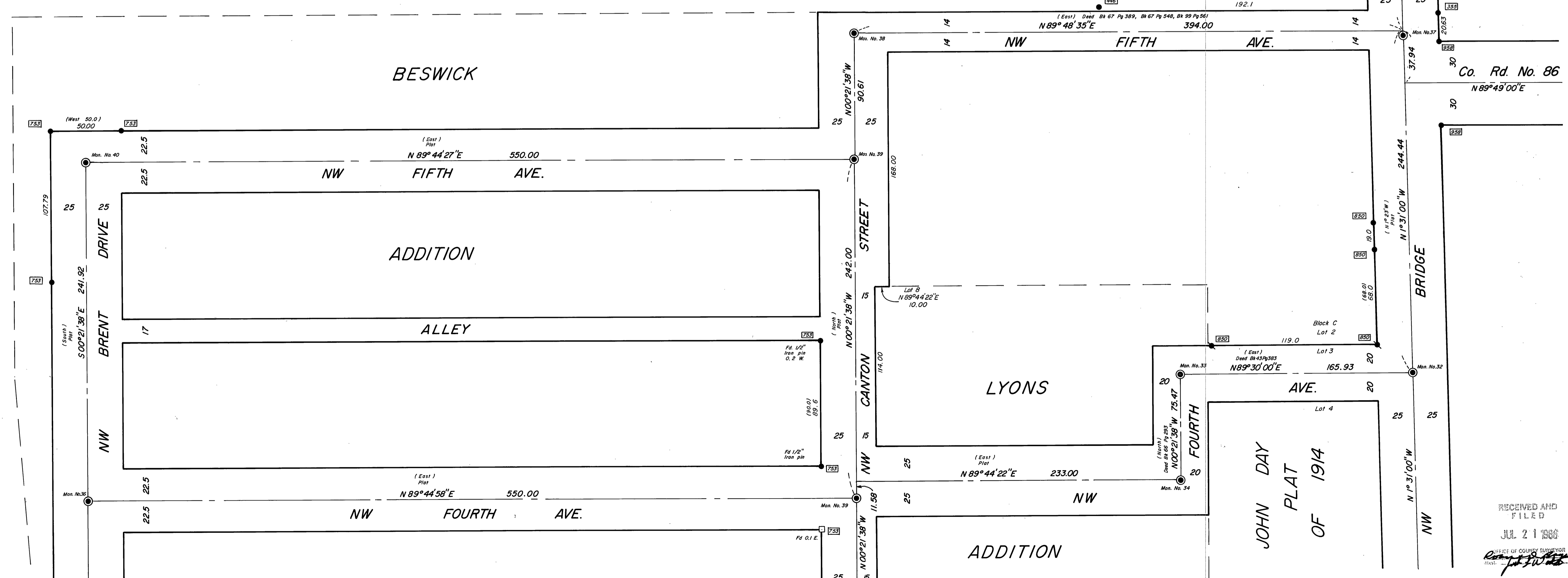


Point being 2609.59 ft. North @ 1626.53 ft.
 East of the SW corner of section 22, T13S, R31E, W4M
 Found brass capped iron pipe of record
 at section corner.



Scale 1" = 200'

BASIS OF BEARINGS
 SOLAR OBSERVATION



REGISTERED
 PROFESSIONAL
 LAND SURVEYOR
Robert D. Baggett
 OREGON
 JULY 15, 1988
 ROBERT D. BAGGETT
 596

SHEET 3 OF 5.

BAGETT-GRIFFITH & ASSOCIATES John Day, Oregon	
Map of Survey of NW John Day Street Monumentation Project Sited in the E1/4 Sec. 22, SW1/4 & S1/2NW1/4 Sec. 23; N1/2NW1/4 Sec. 26, T13S, R31E, W4M. City of John Day, GRANT COUNTY, OREGON	
SURVEYED FOR	CITY OF JOHN DAY, OREGON
SURVEYED BY	R.D.B. & J.L.W. & K.J.W. 1/88-6/88
Scale: 1" = 40'	Drawn by: J.L.W. 6/88

RECEIVED AND
 FILED
 JUL 21 1988
 CLERK OF COUNTY SHERIFF
 JOHN J. WILSON

RECORD MAP OF SURVEY NO. 1042