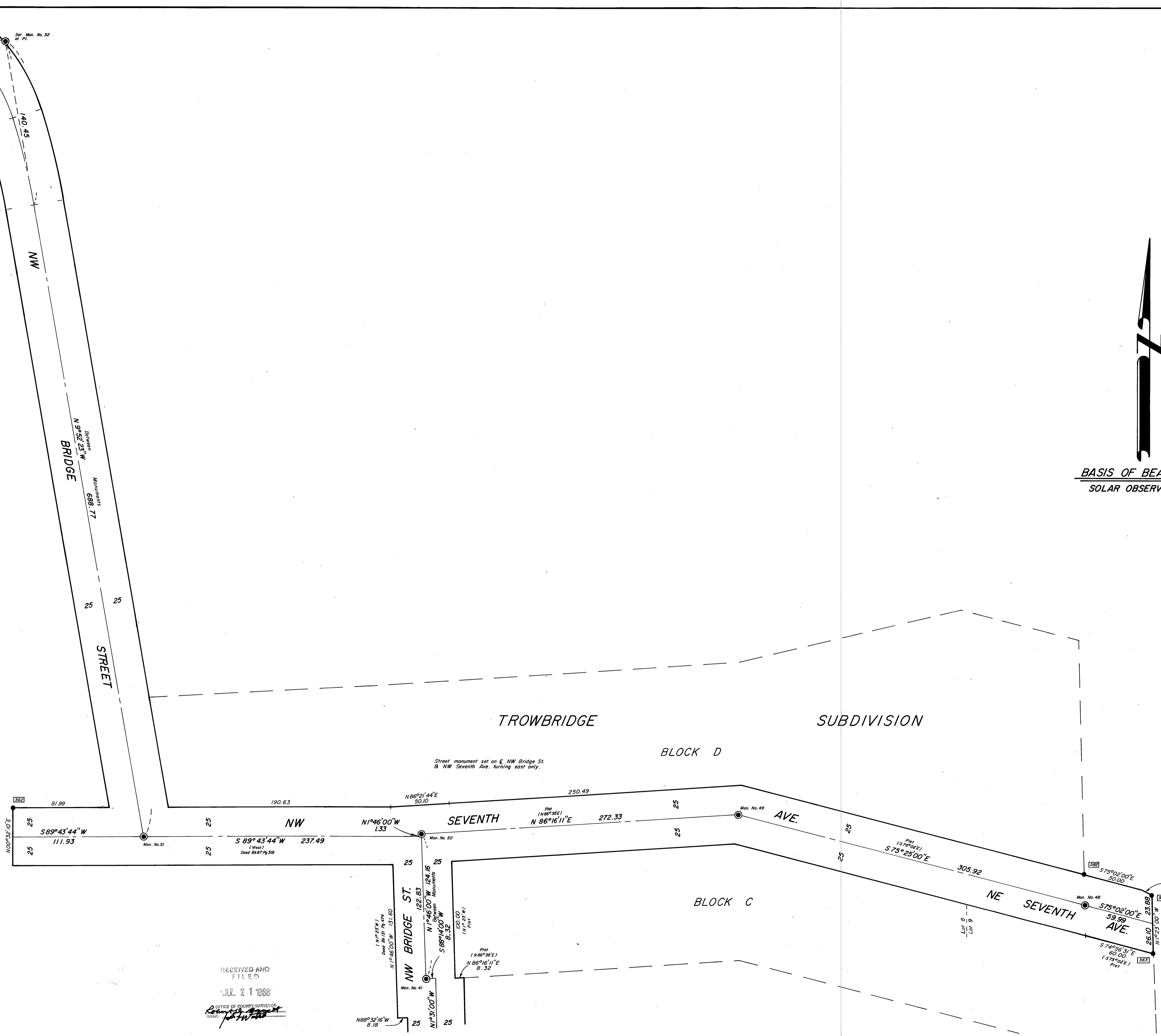
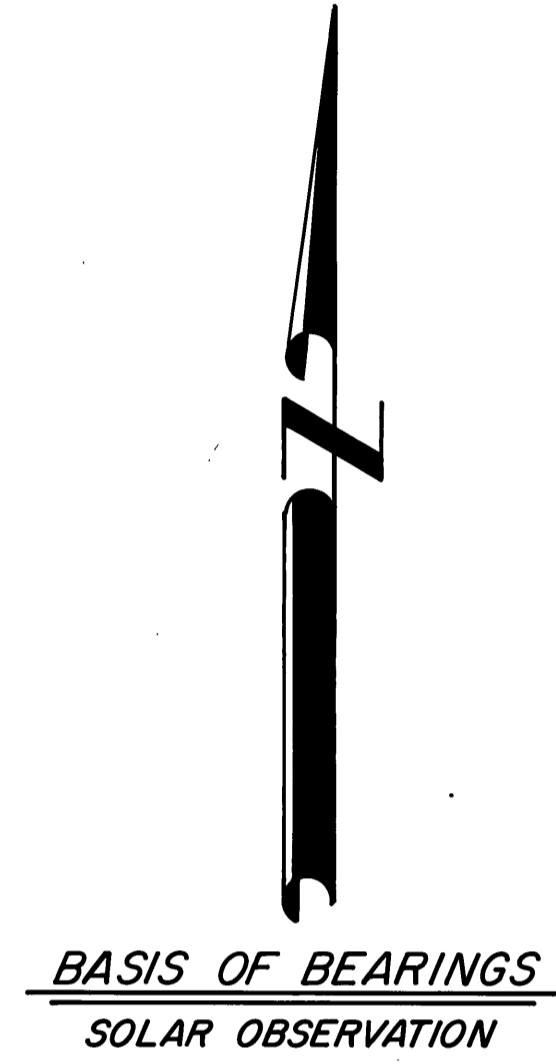


1st Curve Data
 R=150.00
 L=150.00
 N=89°22'W
 2nd Curve Data
 R=77.26
 L=77.26
 N=79°24'W
 3rd Curve Data
 R=77.26
 L=77.26
 N=79°24'W



TROWBRIDGE SUBDIVISION

BLOCK D

BLOCK C

Street monument set on E NW Bridge St. & NW Seventh Ave. turning east only.

RECEIVED AND
 FILED
 JUL 21 1988
 OFFICE OF COUNTY SURVEYOR
 Grant County, Oregon

REGISTERED
 PROFESSIONAL
 LAND SURVEYOR
Robert D. Bagett
 OREGON
 JUL 12 1988
 ROBERT D. BAGETT
 598

SHEET 4 OF 5

BAGETT - GRIFFITH & ASSOCIATES John Day, Oregon		
Map of Survey of NW John Day Street Monumentation Project Situated in the E $\frac{1}{2}$ SW $\frac{1}{4}$ Sec. 22; SW $\frac{1}{4}$ & S $\frac{1}{2}$ NW $\frac{1}{4}$ Sec. 23; N $\frac{1}{2}$ NW $\frac{1}{4}$ Sec. 26, T13S, R31E, W.M. City of John Day GRANT COUNTY, OREGON		
SURVEYED FOR	CITY OF JOHN DAY, OREGON	
SURVEYED BY	R.D.B. & J.L.W. & K.J.W.	1/88-6/88
Scale: 1" = 40'	Drawn by: J.L.W.	6/88

RECORD MAP OF SURVEY NO. 1042