

Survey Map # 111

Scale: 1 in = 200 ft. Drawn by DIG		5 / 1968
Surveyed by DIG & RDB		5 / 1968
Surveyed for City of JOHN DAY		
Grant County, Oregon		
Section 23, T 13 S, R 31 E, W.M.		
The N W 1/4 of the S W 1/4		
MAP of SURVEY		
John Day, Oregon		
BAGETT & GRIFFITH SURVEYING		

- Fd. monuments
- Set 1/2 x 24 in. gal. iron pipe.

27
26
22
23

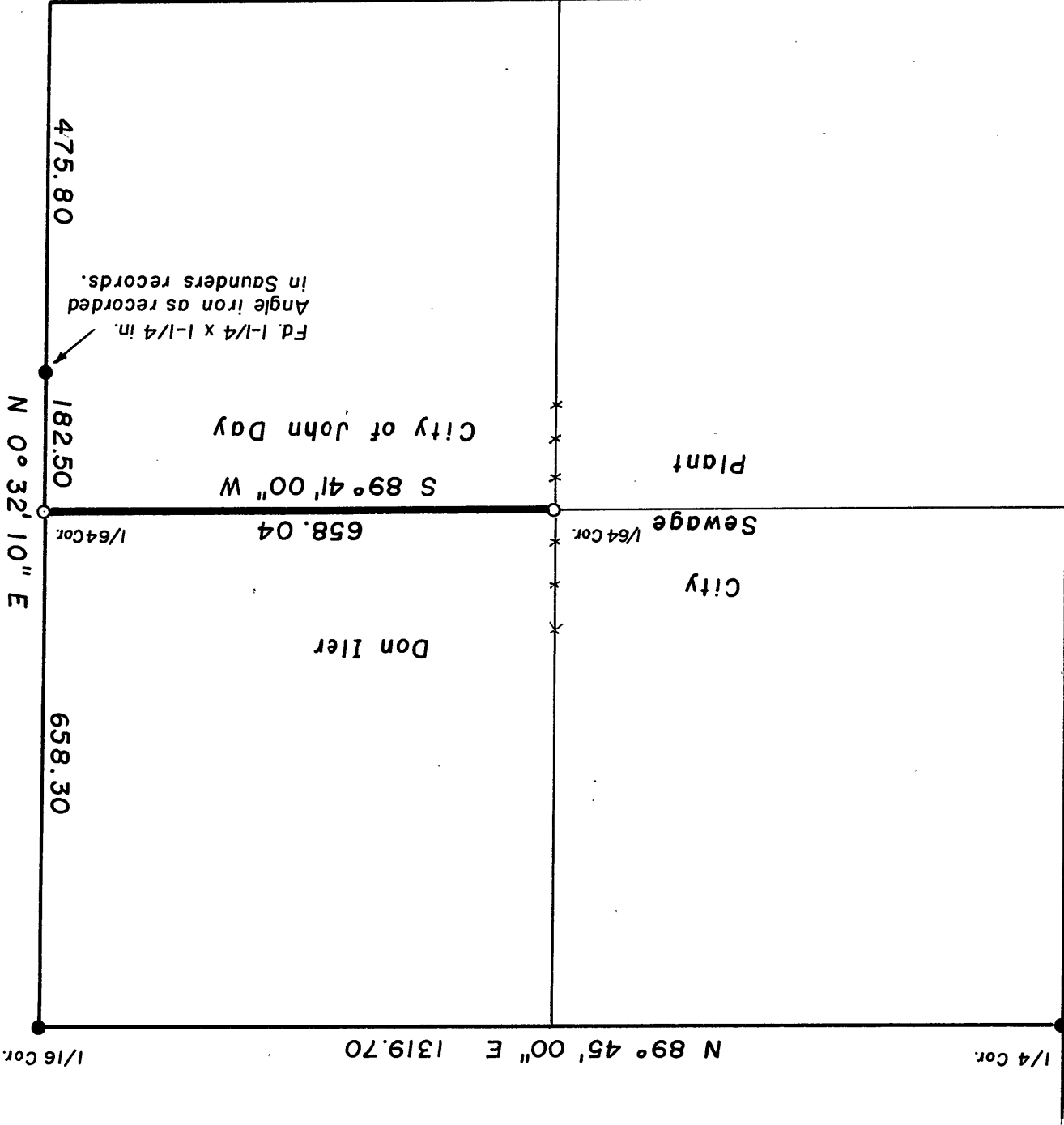
RECEIVED AND FILED
 JUN 17 1968
 JOHN LIVERA, COUNTY CLERK
 Deputy

REGISTERED
 OREGON
 LAND SURVEYOR
Duane I. Griffith
 JULY 10, 1964
 DUANE I. GRIFFITH
 644

The NW 1/4 of the SW 1/4 of section 23 was divided in accordance with procedures set forth in the BLM manual.

(Recorded in Saunders records)

1/16 Cor. Obliterated



N 0° 13' 12" E
 2639.17

BASIS of BEARINGS
 E-W center line of section 26 as recorded on the North Heights Subd. Plat.

