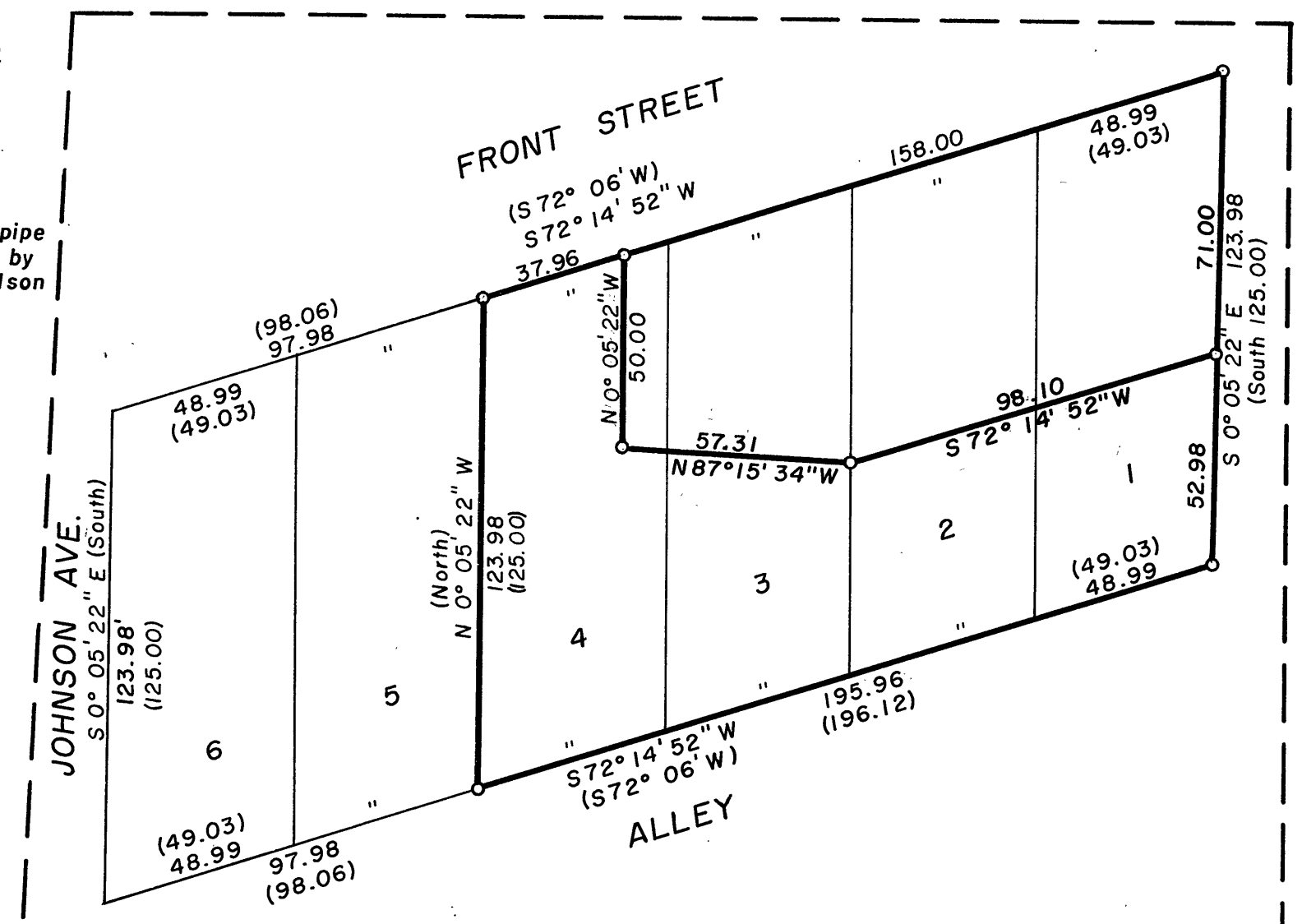


REGISTERED
OREGON
LAND SURVEYOR
Duane I. Griffith
JULY 10, 1964
DUANE I. GRIFFITH
644

BASIS OF BEARINGS
U.S.C. & G.S. forward bearing
from Prairie City N. Base Δ,
to Prairie City S. Base Δ.

- REFERENCE DRAWINGS:
- Cleaver & Cozart Addition to Prairie City
 - Kirchheiner's Addition to Prairie City
 - Kilbourn's Addition to Prairie City
 - Riverside Addition " " "
 - Flageolet Addition " " "
 - Hardman Addition " " "

RECEIVED AND
FILED
JUL 17 1968
John Liveira
JOHN LIVEIRA, County Clerk
By _____ Deputy



DETAIL - BLOCK A
Scale 1" = 40'

- LEGEND
- Fd. monuments
 - Fd. monuments, used to control proportioning.
 - Set 5/8" x 24" iron pin
 - () Record bearing & distance

BAGETT & GRIFFITH SURVEYING
JOHN DAY, OREGON
MAP OF SURVEY
Lots in the
CLEAVER and COZART ADDITION
to
PRAIRIE CITY
Grant County Oregon
SURVEYED BY JOHN FOSUM
FOR L.J. SLOCUM
CHUCK'S SHELL SERVICE
PARK MOTEL
SURVEYED BY DIG & RDB 5/1968
Scale: 1 in. = 100 ft. Drawn by JVZ & DIG 6/1968