


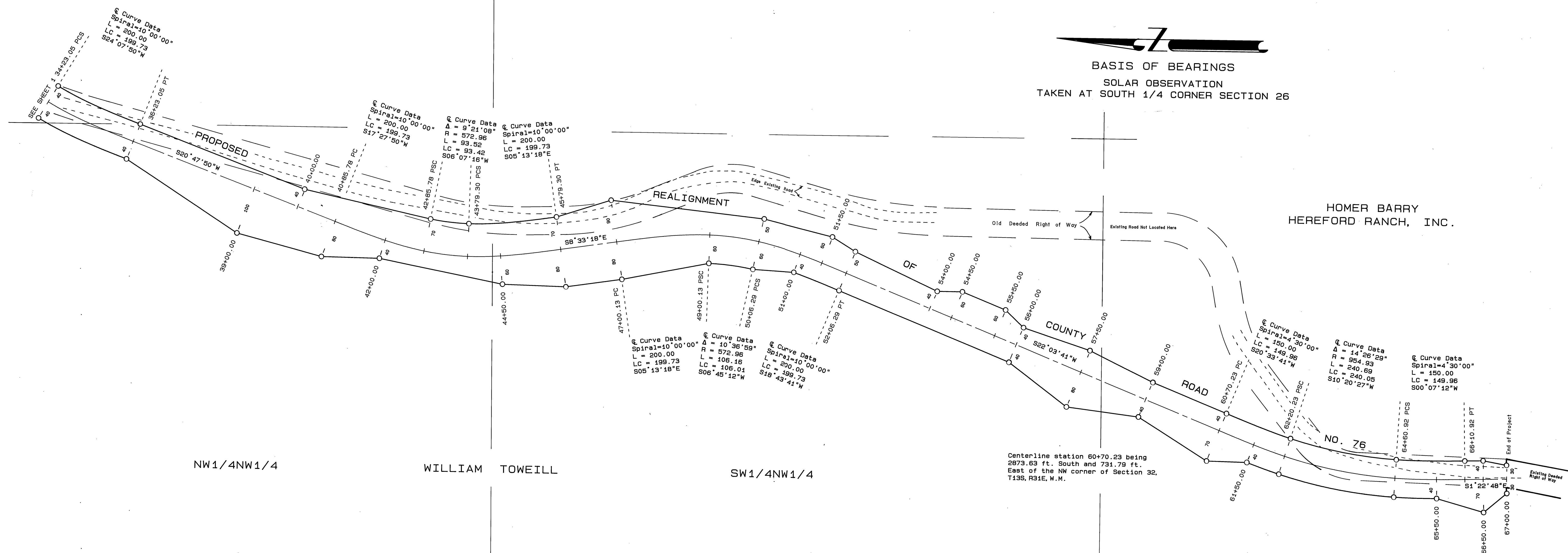
NE1/4NW1/4

WILLIAM TOWEILL

SE1/4NW1/4

SECTION 32


 BASIS OF BEARINGS
 SOLAR OBSERVATION
 TAKEN AT SOUTH 1/4 CORNER SECTION 26



NW1/4NW1/4

WILLIAM TOWEILL

SW1/4NW1/4

HOMER BARRY
HEREFORD RANCH, INC.

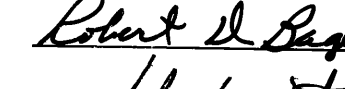
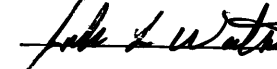
HOMER BARRY
HEREFORD RANCH, INC.

NW1/4SW1/4

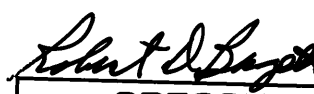
RECEIVED AND
FILED

FEB. 7, 1991


OFFICE OF COUNTY SURVEYOR


 ATTEST: 

REGISTERED
PROFESSIONAL
LAND SURVEYOR


 OREGON
 JULY 19, 1989
 ROBERT D. BAGGETT
 598

SHEET 2 OF 2

 BAGGETT - GRIFFITH & ASSOCIATES John Day, Oregon	
MAP OF SURVEY OF THE PROPOSED REALIGNMENT OF A PORTION OF COUNTY ROAD NO. 76 SITUATED IN THE E1/2NW1/4, SE1/4NW1/4 OF SEC. 28 AND NW1/4NW1/4, NW1/4 OF SEC. 32, T13S, R31E, W.M.	
GRANT COUNTY, OREGON	
SURVEYED FOR	GRANT COUNTY ROAD DEPT.
SURVEYED BY	R.D.B. & J.L.W. & G.J.R. 1/7/91
Scale: 1"=100'	Drawn by: J.L.W.

RECORD MAP OF SURVEY NO.1160