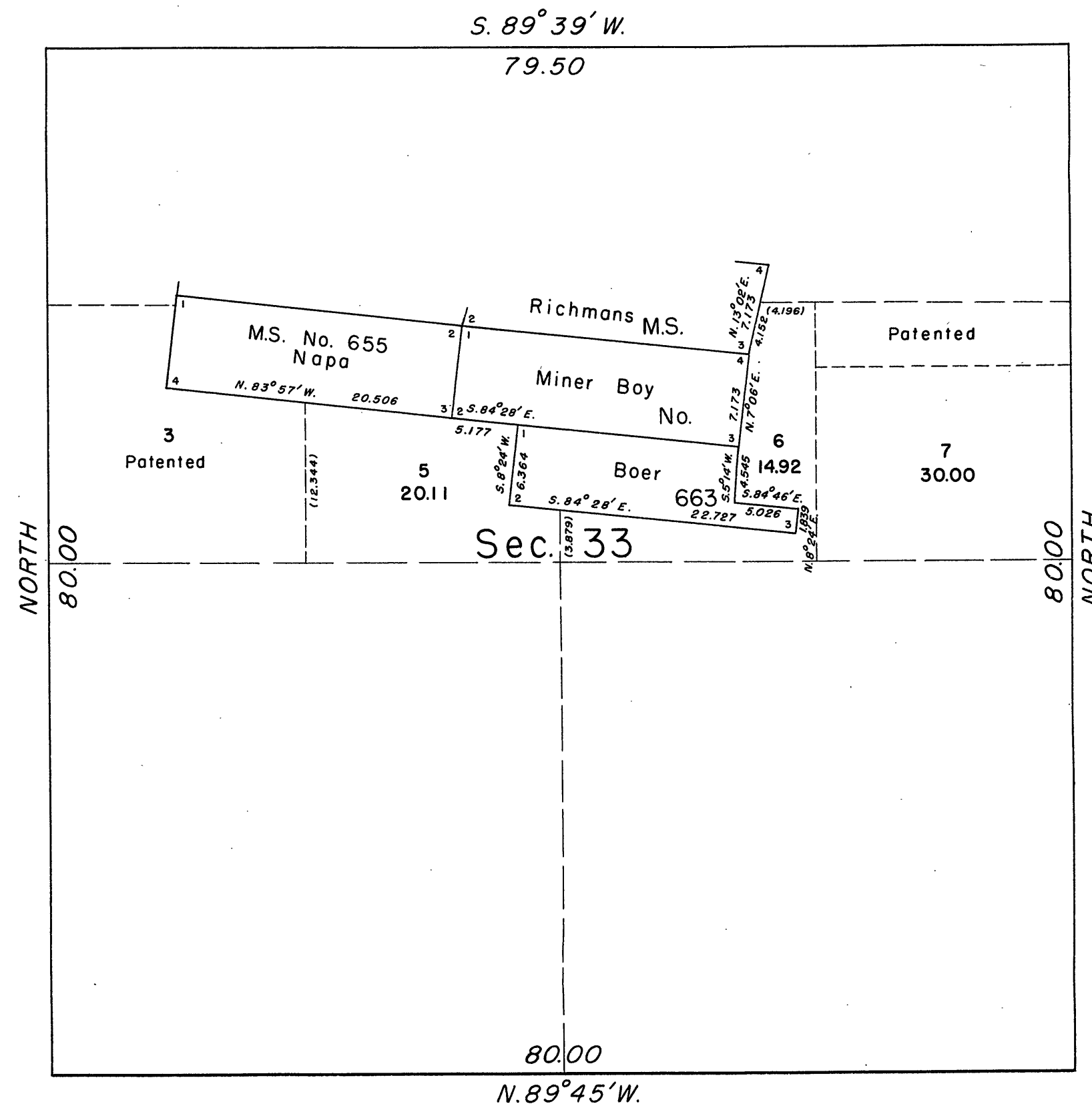
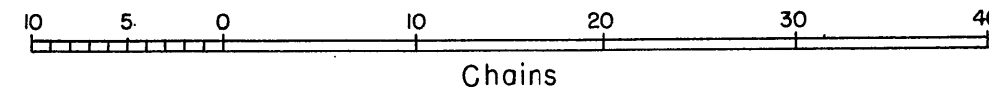


TOWNSHIP 13 SOUTH, RANGE 32 EAST, OF THE WILLAMETTE MERIDIAN, OREGON.  
 SUPPLEMENTAL PLAT OF SECTION 33



This plat is prepared to show amended lottings created by the segregation of the patented Napa lode of Mineral Survey No. 655 and the patented Richmans, Miner Boy, and Boer lodes of Mineral Survey No. 663, all in Sec. 33, T. 13 S., R. 32 E., Willamette Meridian, Oregon, based upon plats approved November 17, 1869 and June 24, 1904.

UNITED STATES DEPARTMENT OF THE INTERIOR  
 BUREAU OF LAND MANAGEMENT  
 Washington, D. C. September 29, 1954

This plat showing amended lottings, having been correctly prepared in accordance with the regulations, is hereby accepted.

For the Director

*Carl G. Harrington*  
 Cadastral Engineering Officer