

Coordinate Table

Sec. 22, T. 13 S., R. 31 E., W.M.

Pt. #	Northing	Easting	Pt. #	Northing	Easting
1	9813.450	19183.610	1012	10067.278	17662.664
2	9719.504	18906.369	1013	10128.228	16843.953
3	9636.678	18414.591	1014	10114.811	17064.318
4	10134.966	17444.400	1015	10090.634	17234.120
5	10218.411	16382.839	1016	10020.957	17322.679
6	9226.815	15236.517	1017	10144.627	17447.185
7	11542.127	18242.855	1018	9950.123	17566.211
1000	9776.347	18887.027	1019	9831.936	17848.917
1001	9710.535	18909.565	1020	10230.557	16569.804
1002	9685.661	18619.563	1021	9806.877	18039.666
1003	9869.832	18070.173	1022	10105.039	17545.403
1004	9697.674	18425.363			
1005	9663.213	18335.921			
1006	9628.014	18414.594			
1007	9623.684	18622.612			
1008	9615.251	18622.616			
1009	9615.590	18625.356			
1010	9586.623	18632.498			
1011	9667.506	18875.526			

SURVEY FOR :
OREGON STATE HIGHWAY DIVISION

Sheet No.

2

PROJECT :
WCL John Day Slide Correction

Total Sheets

2

John Day Highway #5

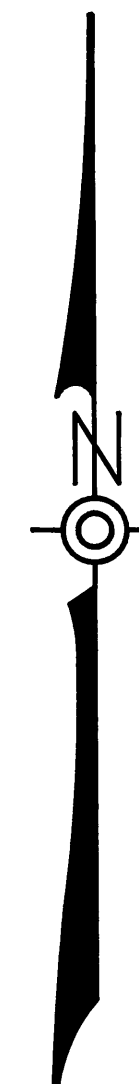
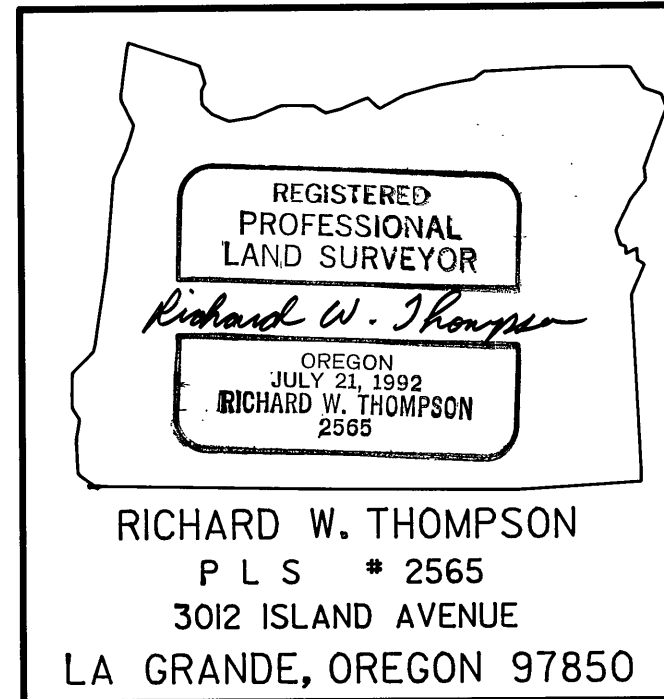
GRANT COUNTY

Key No. 06562

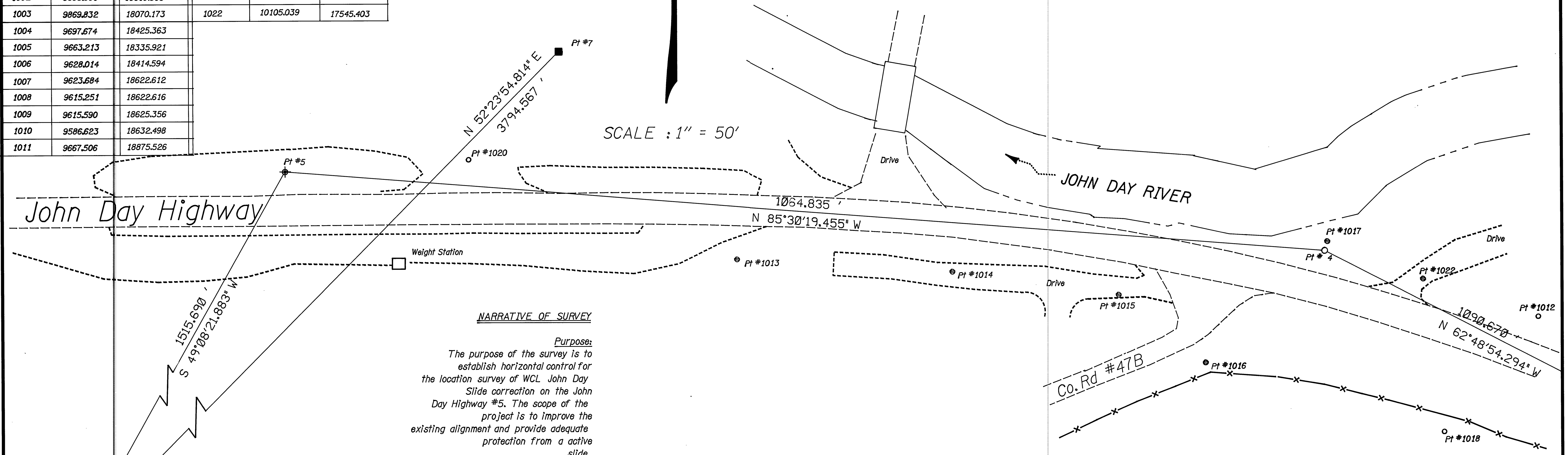
EA # C012-1401

Date of Survey : FEBRUARY, 1993

SCALE : 1" = 50'



SCALE : 1" = 50'



NARRATIVE OF SURVEY

Purpose:

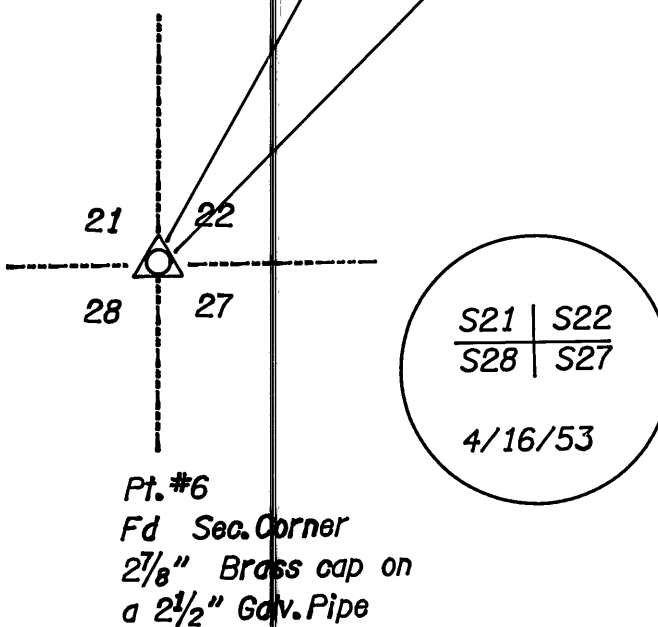
The purpose of the survey is to establish horizontal control for the location survey of WCL John Day Slide correction on the John Day Highway #5. The scope of the project is to improve the existing alignment and provide adequate protection from a active slide.

Horizontal Control:

A horizontal control traverse was ran through the project and tied Section Corners 21, 22, 27, 28 and 1/4 Corner 22, 27, T. 13 S., R. 31 E., W.M.. Bases of Bearing was based from WCL John Day - Canyon Creek Section Right-of-Way Map (OSHD Right-of-Way Map #10B-2-6)

The coordinates system used for the monument positions are from Right-of-Way Map 10B-2-6 which are assumed coordinates.

Linear Misclosure before adjustment was 1:116,000, and after adjustment is 1:238,000. The equipment used for the traverse: Wild T1610 Theodolite, DI 1600 and Rec. Module.



Pt. #6
Fd. Sec. Corner
2 7/8" Brass cap on
a 2 1/2" Galv. Pipe

LEGEND

	Fd Monument As Noted
	Fd 5/8" Pin & Cap Marked "BGA Survey Marker"
	Fd 5/8" Pin
	Set Hub & Tack
	Set 1/2" Sq. Pin & Cap Marked "OSHD Trav. Pt. 5"

RECEIVED AND FILED
JAN 25 1994
OFFICE OF COUNTY SURVEYOR
GRANT COUNTY, OREGON
By: *[Signature]*