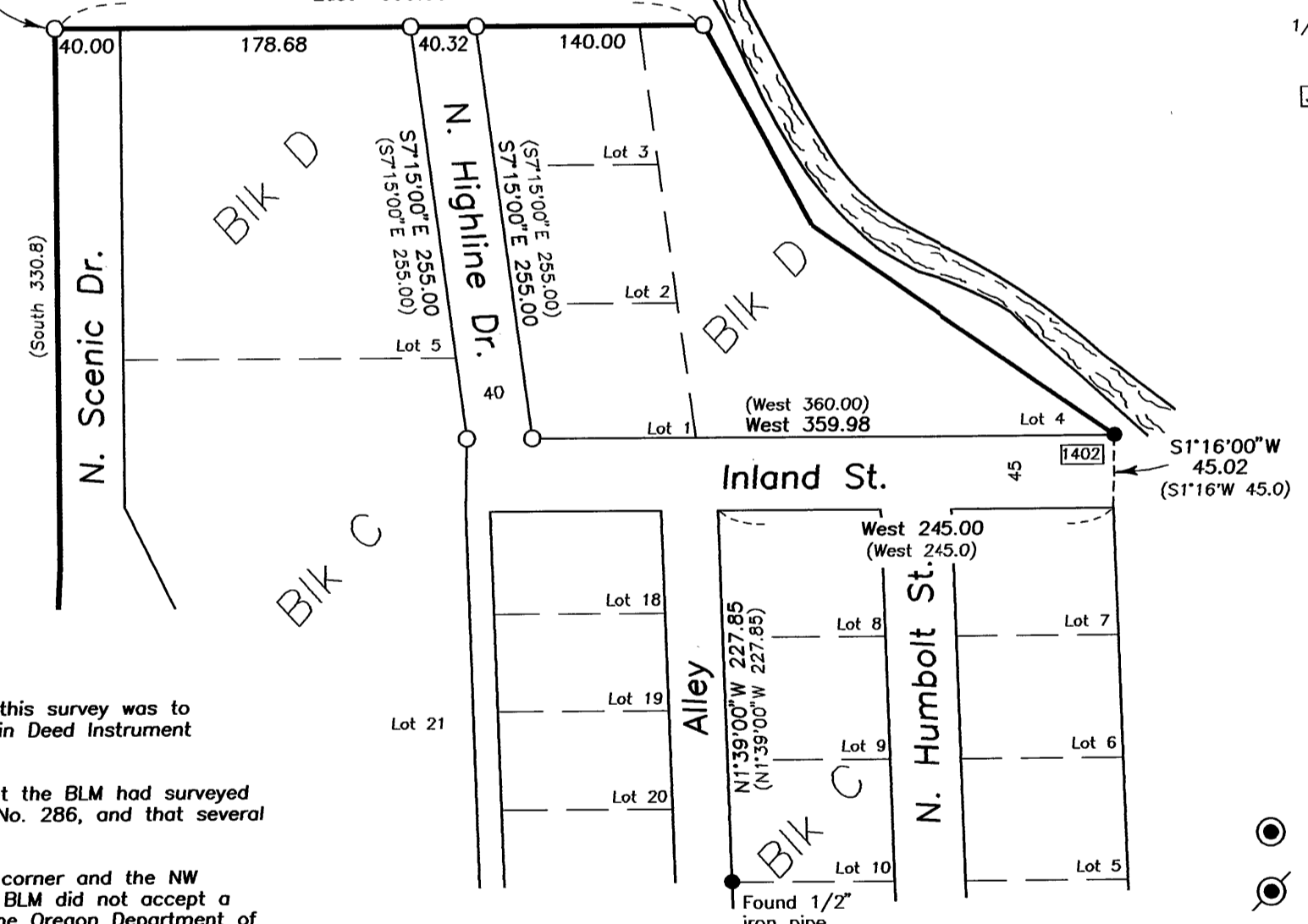
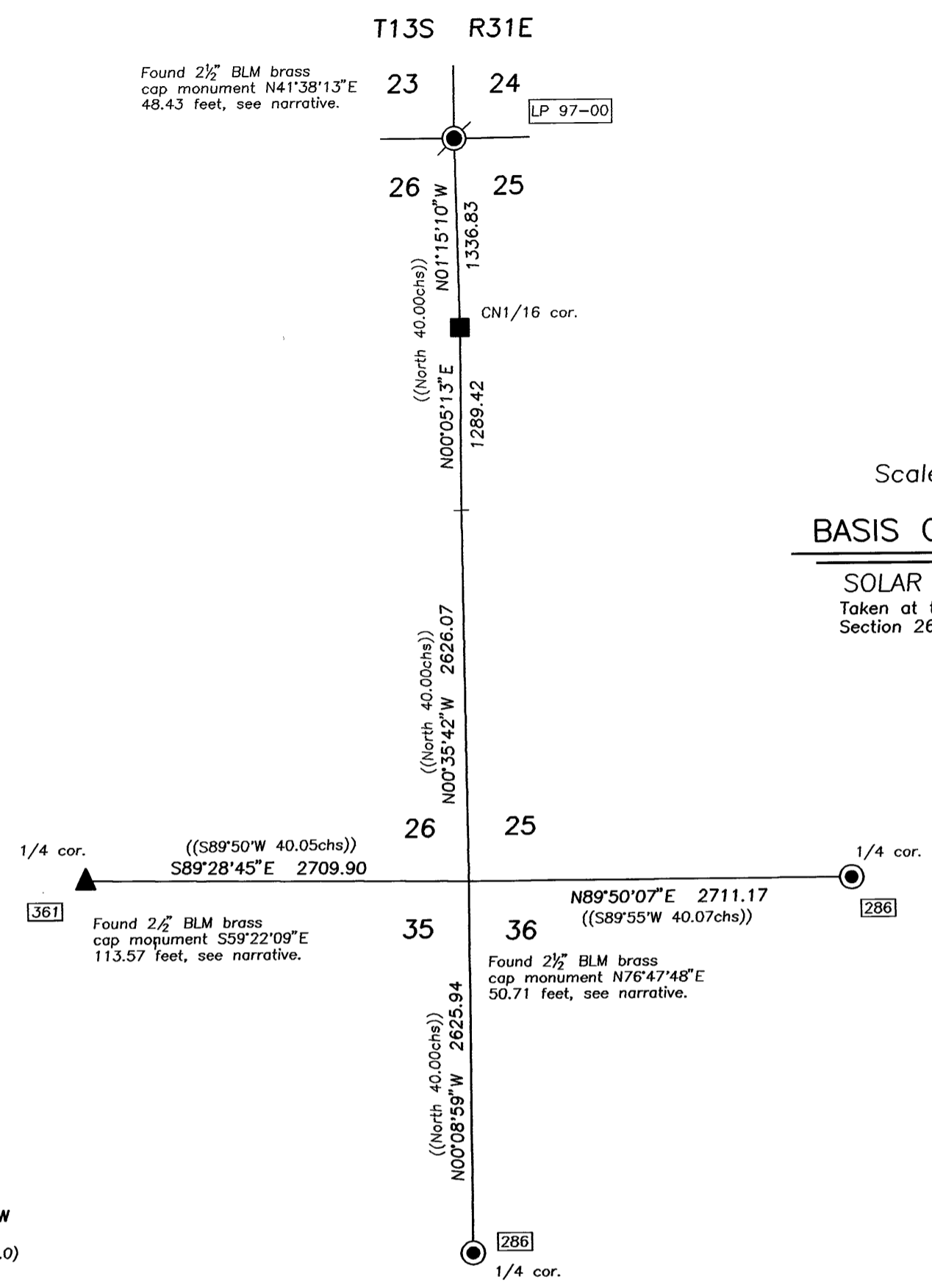


Found 2 1/2" BLM brass cap monument S59°27'30"E 84.49 feet, see narrative.

Point being 617.87 feet South and 39.90 feet East of the N1/4 corner of Section 35.



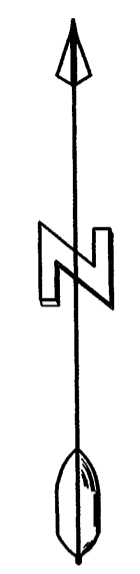
Prophet Addition



Found 2 1/2" BLM brass cap monument N41°38'13"E 48.43 feet, see narrative.

Found 2 1/2" BLM brass cap monument S59°22'09"E 113.57 feet, see narrative.

Found 2 1/2" BLM brass cap monument N76°47'48"E 50.71 feet, see narrative.



Scale 1" = 100'

BASIS OF BEARINGS

SOLAR OBSERVATION
Taken at the N1/4 corner of Section 26, T13S, R31E, W.M.

Scale 1" = 1000'

Narrative

This survey was performed at the request of Garry Allen. The purpose of this survey was to locate and monument selected lines of Mr. Allen's property, as described in Deed Instrument No. 971410.

After searching the available records pertaining to this survey, I found that the BLM had surveyed and monumented certain corners of Section 35 in 1971, filed as Survey No. 286, and that several property surveys have been done which pertain to this tract.

Survey No. 286, performed by the BLM in 1971, indicates that the E1/4 corner and the NW corner of Section 35 were found original corners. During their survey the BLM did not accept a marked stone at the N1/4 corner of Section 35, nor did they consider the Oregon Department of Transportation tie to the NW corner of Section 25, as shown on Hwy Drawing No. 5B-11-10, when they proportioned in the missing corners of Section 35. Survey No. 286 has been disputed by Grant County and the Cities of John Day and Canyon City, and has not been accepted as representing the true corners of this section. I do not accept the position of the NE corner of Section 35 or the EW1/64 corner which the BLM set.

I positioned the NE corner of Section 35 by double proportion measure, using the found Grant County Surveyor monument 1/2 mile west set in survey number 361, the found BLM monument 1/2 mile east and the found BLM monument 1/2 mile south both of which were set in survey number 286, and the found aluminum cap 1 mile north set during land partition number 97-29. I set the EW1/64 corner on line and at the proper distance between the found Grant County Surveyor monument at the N1/4 corner of section 35 and the found BLM monument at the NW corner of section 35.

At the N1/16 corner between Sections 25 and 26 I found a concrete post which has been accepted as the N1/16 corner for more than 25 years. Many property descriptions are tied to this corner and I accept its position.

I recovered several monuments within Prophet Addition and used record bearings and distances to position the corners set in this addition, as shown.

This survey was performed with a Topcon GTS-4 total station, with a closed loop random traverse.

RECEIVED AND FILED

NOV 7 1997

OFFICE OF COUNTY SURVEYOR
Attest: *[Signature]*

LEGEND

- Found 2 1/2" iron pipe with attached 3" BLM brass cap.
- ⊙ Found 2 1/2" alum. pipe with attached 3" alum. cap marked CORNERSTONE SURVEYING, INC.
- ▲ Found 1 1/2" iron pipe with attached 2 1/2" Grant County Surveyor brass cap.
- Found 10"x10" concrete post of record.
- Found 5/8" iron pin with attached yellow plastic cap marked, BGB Survey Marker, unless otherwise shown.
- ⊙ Set 5/8"x30" iron pin with attached 2" alum. cap marked CORNERSTONE SURVEYING, INC.
- Set 5/8"x30" iron pin with attached red plastic cap marked CORNERSTONE SURVEYING, INC.
- () Record bearing and distance.
- Found monument, see record survey number shown in box.

REGISTERED PROFESSIONAL LAND SURVEYOR

[Signature]
OREGON
SEPT 19, 1995
JACK L. WATSON
2734
Renewal Date 6/30/98

CORNERSTONE SURVEYING, Inc.

233 S. Canyon Blvd., John Day, Oregon
(541) 575-1813

MAP OF SURVEY SELECTED PROPERTY LINES SITUATED IN THE NE 1/4 AND THE NW 1/4 OF SECTION 35 T13S, R31E, W.M.	
GRANT COUNTY, OREGON	
SURVEYED FOR: GARRY ALLEN	
SURVEYED BY: Jack Watson	Date: Sept. 1997
DRAWN BY: Jack Watson	