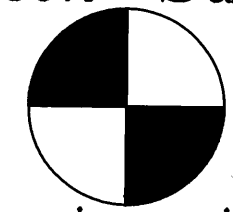


**SURVEY FOR THE REMONUMENTATION
OF THE NORTH 1/4 CORNER OF
SECTION 1, T.13S., R.26E., W.M.
GRANT COUNTY, OREGON**

Ferguson Surveying



Engineering

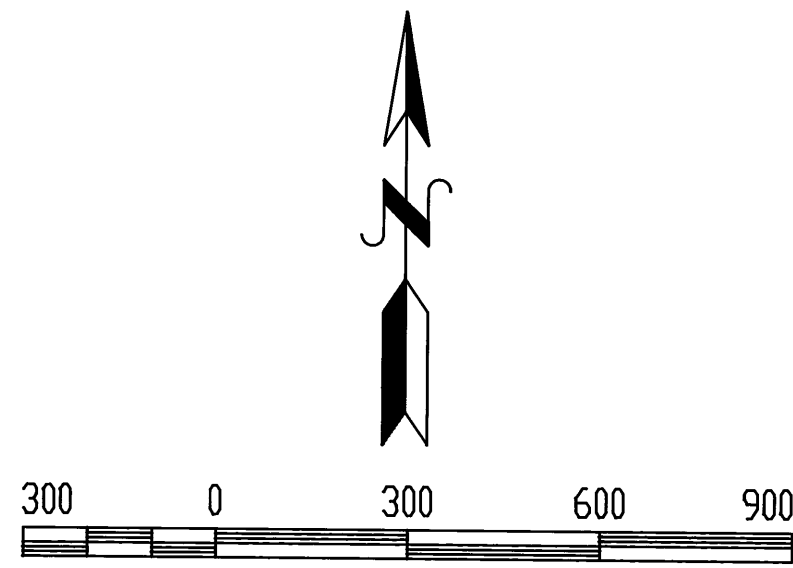


MT. VERNON, OREGON
PHONE (541)932-4520
FAX (541)932-4430
EMAIL DFSE@EONI.COM

NARRATIVE

This survey was performed to remonument the North 1/4 corner of Section 1, T.13S., R.26E., W.M. in Grant County, Oregon. This survey is based on Grant County Map of Survey No. 1050. This survey was performed in February of 1998.

The monument for the above stated North 1/4 corner was found to be destroyed. In the process of replacing this corner, it was found that the reference pins as shown on Grant County Map of Survey No. 1050 were in error. In order to clarify this error, a closed loop traverse was ran between the monuments 1/2 mile east and west of this corner. This corner was then remonumented as shown on this survey. See "CERTIFIED RECORD OF LAND CORNER MONUMENTATION" as referenced to this map of survey no. 1478, filed in the office of the Grant County Surveyor.

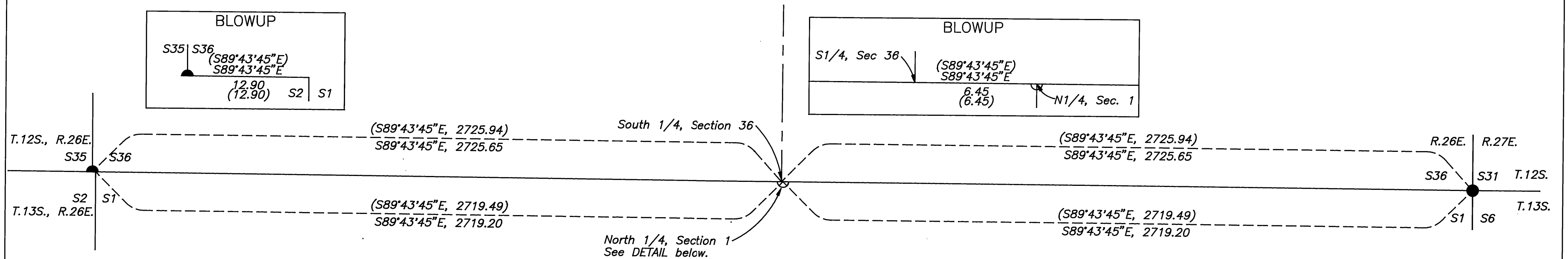


Scale: 1"=300'

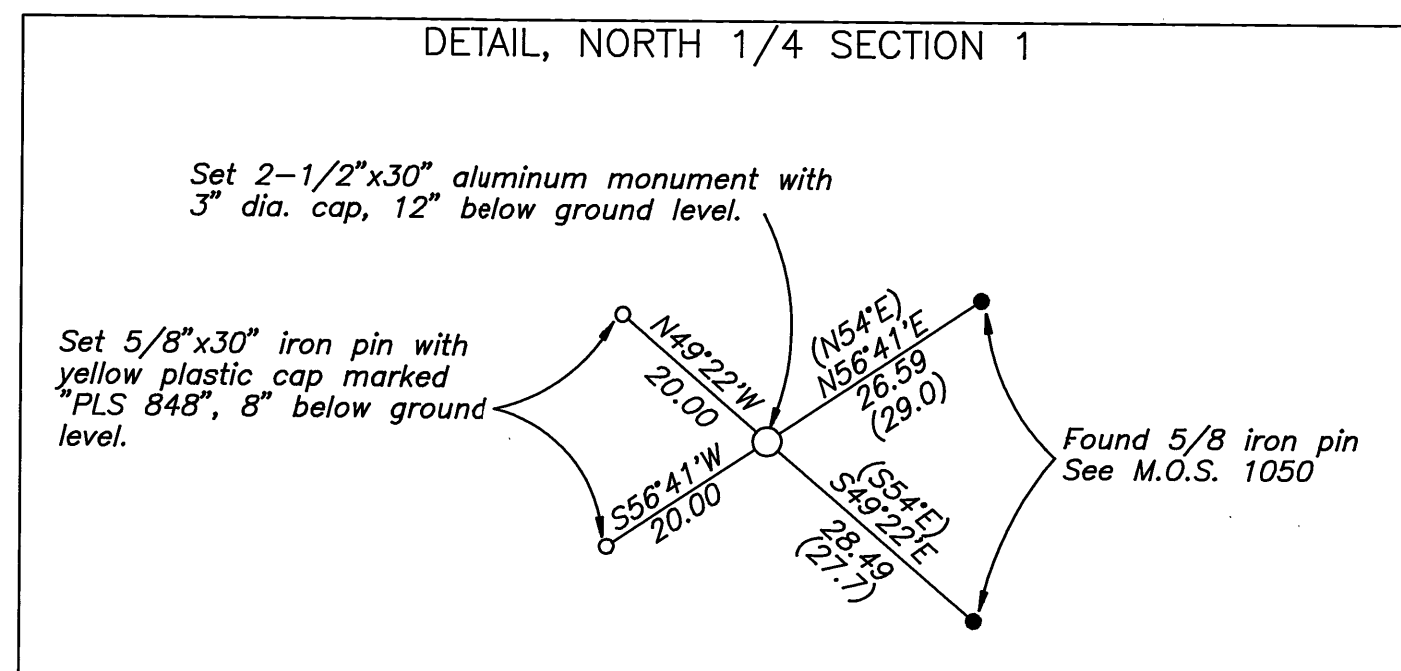
BASIS OF BEARING: Grant County Map of Survey No. 1050

LEGEND

- Found Monument, See Grant County Map of Survey No. 1050
- Set 2-1/2"x30" aluminum monument with 3" diameter aluminum cap.
- () Record Bearing/Distance as shown on Grant County Map of Survey No. 1050



DETAIL, NORTH 1/4 SECTION 1



RECEIVED AND FILED

JUN 23 1998

CLERK OF COUNTY SURVEYOR
Attest: *[Signature]*

REGISTERED
PROFESSIONAL
LAND SURVEYOR

OREGON
JULY 12, 1988
DOUGLAS M. FERGUSON
848

RENEWAL DATE:
12/31/98