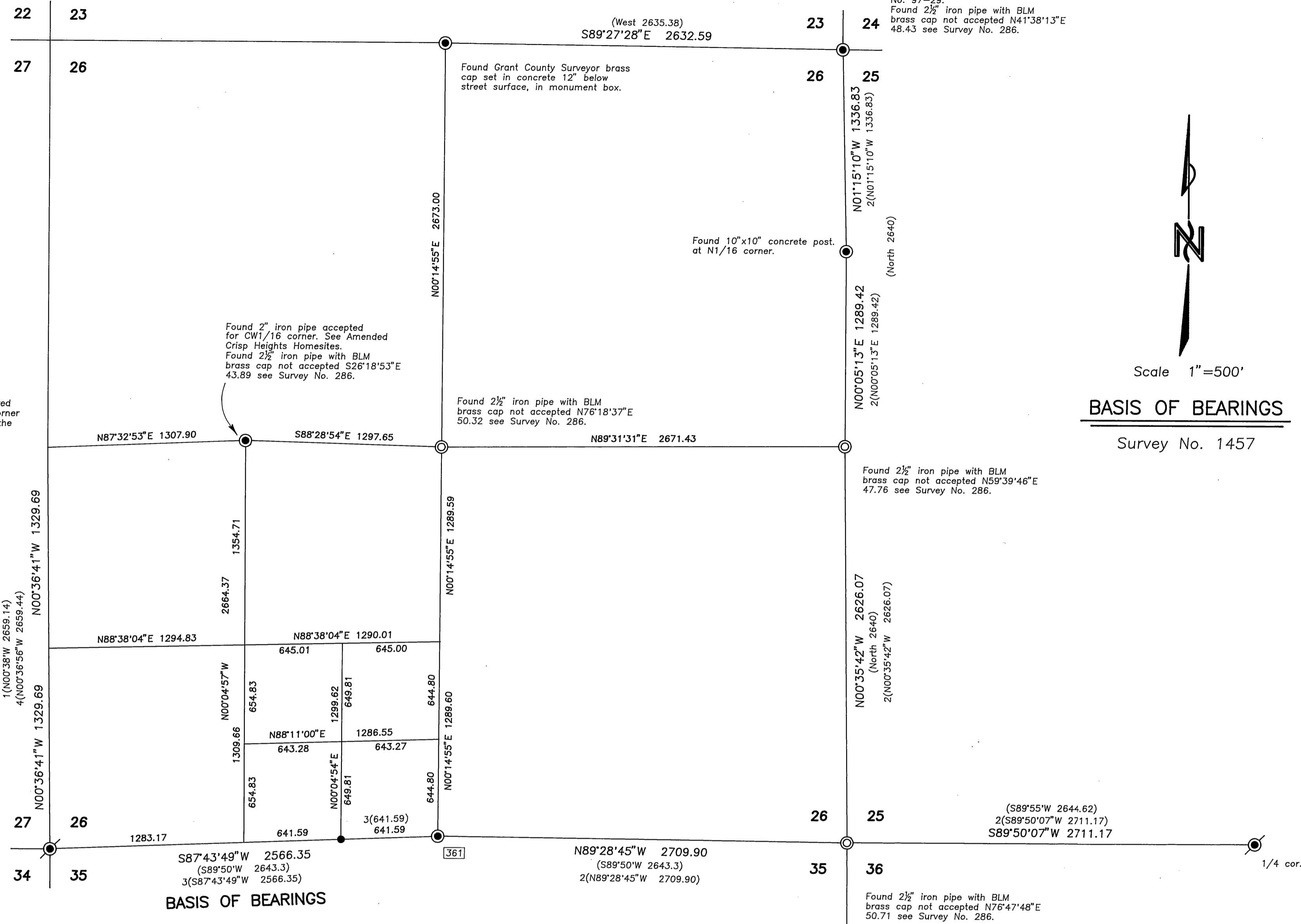


T13S R31E



The BLM monument was removed by the county surveyor. The corner position was established from the references.

Found 2 1/2\"/>

(North 2640)
1(N00°36'41\"/>

(North 2640)
2(N00°08'59\"/>

(North 2640)
3(S87°43'49\"/>

(North 2640)
4(N00°36'41\"/>

NARRATIVE

This survey was performed at the request of Garry Allen. The purpose of this survey was to establish the lines of Mr. Allen's property as described in Book 109, Page 365 and Instrument No. 20040430, deeds of Grant County.

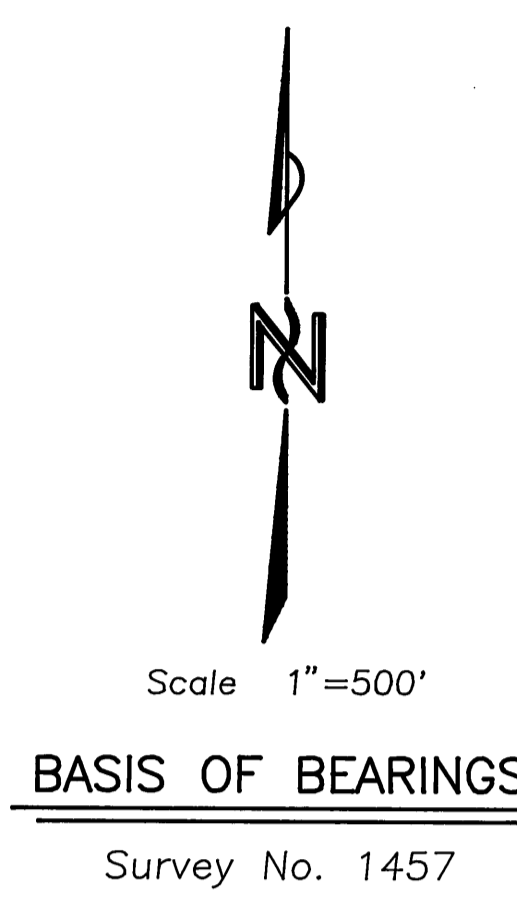
After searching the available records pertaining to this survey, I found that the BLM has surveyed and monumented certain corners of Section 26 in 1971, filed as Survey No. 286. Survey No. 286, indicates that the E1/4 corner Section 35; the N1/4 corner of Section 36; the W1/4 corner of Section 26 were found original corners. During their survey the BLM did not accept a marked stone at the N1/4 corner of Section 35, nor did they consider the Oregon Department of Transportation tie to the NW corner of Section 25, as shown on Hwy Drawing No. SB-11-10, when they set the corners of Section 26. Survey No. 286 has been disputed by Grant County and the Cities of John Day and Canyon City, and has not been accepted as representing the true corners of this section. I do not accept the position of the BLM monuments at the E1/4 corner or the SE corner of Section 26, nor do I accept the positions of the BLM monuments within Section 26.

The NE corner of Section 26 was monumented during the survey of Land Partition No. 97-29, dated September 9, 1997. The proportion position of the E1/4 corner and the SE corner of Section 26 were established in that survey, although the positions were not monumented. I accept the positions of these corners. I monumented the SE corner of Section 26 at double proportion between the NE corner of Section 26 and the E1/4 corner of Section 35 for northings. The eastings were determined between the S1/4 of Section 26 and the N1/4 corner of Section 36 as shown. The E1/4 corner was set at the single proportion position between the SE section corner and the NE corner of Section 26. Section 26 was then subdivided in the manner prescribed in the 1973 BLM Manual of Surveying Instructions.

At the N1/16 corner between Sections 25 and 26 I found a concrete post which has been accepted as the N1/16 corner for more than 30 years. This corner is an angle point in the section line. Many property descriptions are tied to this corner and I accept its position. The 2\"/>

Ties are shown from the corner positions to the BLM monuments from Survey No. 286 which were found during this survey.

RECEIVED AND FILED
FEB. 26, 2004
OFFICE OF COUNTY SURVEYOR
JACK L. WATSON

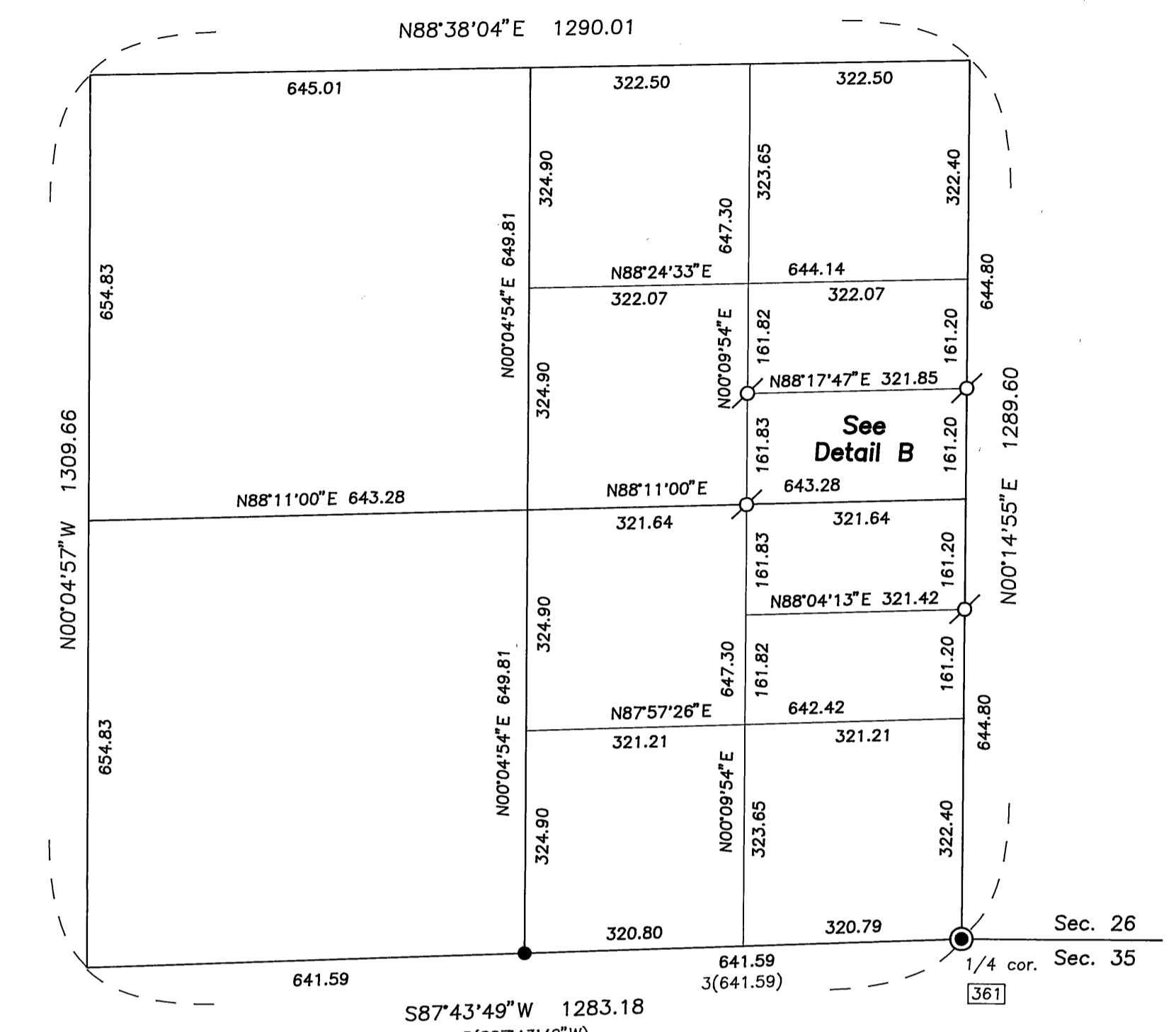


BASIS OF BEARINGS
Survey No. 1457

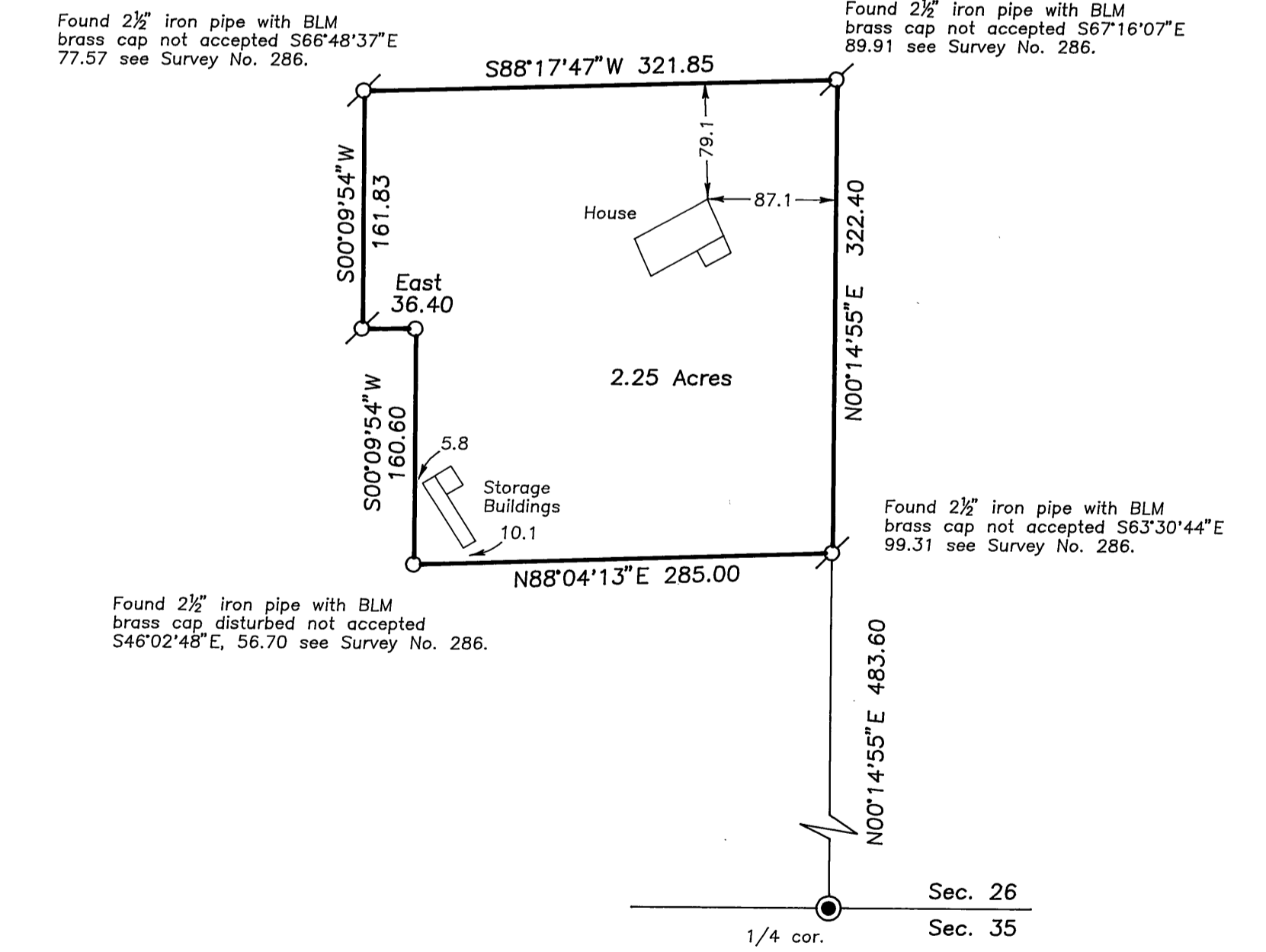
LEGEND

- Found 1 1/2\"/>
- ⊙ Found 2 1/2\"/>
- Found 5/8\"/>
- Set 5/8\"/>
- ⊙ Set 5/8\"/>
- ⊙ Set 2 1/2\"/>
- () GLO record bearing and distance.
- 1() Survey No. 286 record bearing and distance.
- 2() Partition No. 97-29 record bearing and distance.
- 3() Survey No. 1457 record bearing and distance.
- 4() Survey No. 1659 record bearing and distance.
- Found monument, see record map of survey number shown in box.

Detail of SE1/4SW1/4 Section 26
Scale 1\"/>



Detail B
Scale 1\"/>



REGISTERED PROFESSIONAL LAND SURVEYOR
JACK L. WATSON
RENEWAL DATE 6/30/2004

CORNERSTONE SURVEYING, Inc.
233 S. Canyon Blvd., John Day, Oregon 97845
(541) 575-1813

MAP OF SURVEY SUBDIVISION OF SECTION 26 T13S, R31E, W.M.
GRANT COUNTY, OREGON

SURVEYED FOR: **Garry Allen**
SURVEYED BY: Jack Watson Date: 2/19/2004
DRAWN BY: Jack Watson