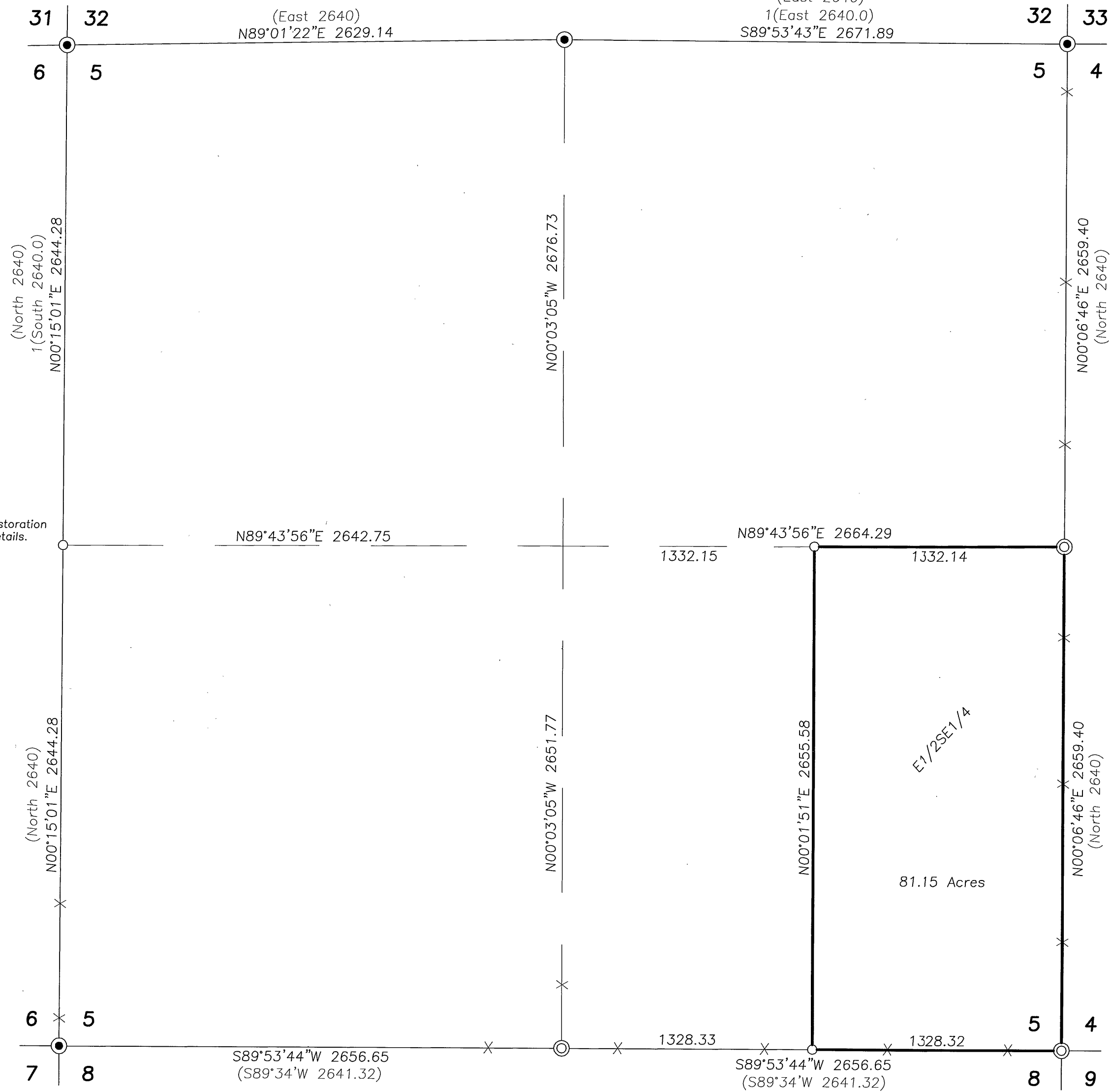
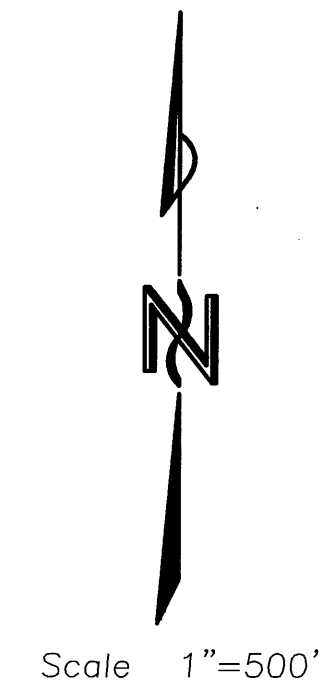


T13S R27E



See corner restoration records for details.



LEGEND

- ⊙ Found 1" iron pipe with attached 2" brass cap, see Survey No. 7G.
- Set 5/8"x30" iron pin with attached 2" alum. cap marked CORNERSTONE SURVEYING, INC. and the appropriate corner designation.
- ⊙ Set 2 1/2" aluminum pipe with attached 2 1/2" aluminum cap. See corner restoration records for details.
- X—X Fence Line
- () GLO record bearing and distance.
- 1() Survey No. 7G record bearing and distance.

NARRATIVE

This survey was performed at the request of Alec Moore, personal representative of Clifton MacKay's estate. The purpose of this survey was to establish the corners of Parcel 2, Land Partition No. 2005-20, which is the E1/2SE1/4 of Section 5.

A search was made of the available records pertaining to this survey and for the corner monuments from Survey No. 7G and the original corner monuments at the E1/4, W1/4, S1/4 and the SE corner of Section 5. I found and accepted the corner monuments from Survey No. 7G as shown. I also found the original corner stone at the SE corner of Section 5. No evidence of the original corner was found at the S1/4 corner. I re-established the corner by single proportionate measurement. I found the monument from Survey No.7G at the W1/4 corner lying out of the ground. I re-established the position by single proportionate measurement. No evidence of the iron pipe set in Survey No.7G or the original corner stone was found at the E1/4 corner. I re-established the corner by single proportionate measurement. The section was subdivided in the usual manner and the remaining corners of the E1/2SW1/4 were established as shown.

RECEIVED AND FILED

DEC. 2, 2005
OFFICE OF COUNTY SURVEYOR
Clatsop County, Oregon
Attest: *M. M. ...*

REGISTERED PROFESSIONAL LAND SURVEYOR

Jack L. Watson
OREGON
SEPT 19, 1995
JACK L. WATSON
2734

Renewal Date 6/30/2006



CORNERSTONE SURVEYING, Inc.

233 S. Canyon Blvd., John Day, Oregon 97845
(541) 575-1813

MAP OF SURVEY SUBDIVISION OF SECTION 5 T13S, R27E, W.M.	
GRANT COUNTY, OREGON	
SURVEYED FOR: Alec Moore	
SURVEYED BY : Jack Watson	Date: 11/18/2005
DRAWN BY : Jack Watson	

MAP OF SURVEY NO. 1745