

RECORD OF SURVEY

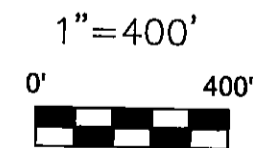
SECTIONS 19, 25, 26, 28, 29, 33, 34 & 35,
TOWNSHIP 8 SOUTH RANGE 26 EAST
WILLAMETTE MERIDIAN, GRANT COUNTY, OREGON

LEGEND:

- DENOTES FOUND MONUMENT AS NOTED
- DENOTES FOUND MONUMENT AS NOTED
- DENOTES SET 3 1/4" ALUMINUM CAP ON 3"x30" PIPE, SET FROM ORIGINAL EVIDENCE
- DENOTES SET 3 1/4" ALUMINUM CAP ON 3"x30" PIPE, UNLESS OTHERWISE NOTED SET FROM ORIGINAL EVIDENCE
- DENOTES SET 3 1/4" ALUMINUM CAP ON 3"x30" PIPE, SET BY PROPORTION
- DENOTES SET 3 1/4" ALUMINUM CAP ON 3"x30" PIPE, SET BY PROPORTION
- DENOTES SET 3 1/4" ALUMINUM CAP ON 3"x30" PIPE (UNLESS OTHERWISE NOTED)
- DENOTES FOUND LINE TREE
- (R1) -RECORD MEASUREMENT, GESNER 1877
- (R2) -RECORD MEASUREMENT, GRIFFITH 1984
- PROPERTY BOUNDARY POSTED WITH FOREST SERVICE 54-2 SIGNS
- FENCE LINE
- NFSL -NATIONAL FOREST SYSTEM LANDS
- BLM -BUREAU OF LAND MANAGEMENT

SEE SHEET 7

REGISTERED
PROFESSIONAL
LAND SURVEYOR
Mark A. Lichtenthaler
OREGON
JANUARY 18, 1994
MARK A. LICHTENTHALER
2645
EXPIRES 12-31-2016



UNITED STATES DEPARTMENT OF AGRICULTURE
FOREST SERVICE
REGION 6 - UMATILLA NATIONAL FOREST

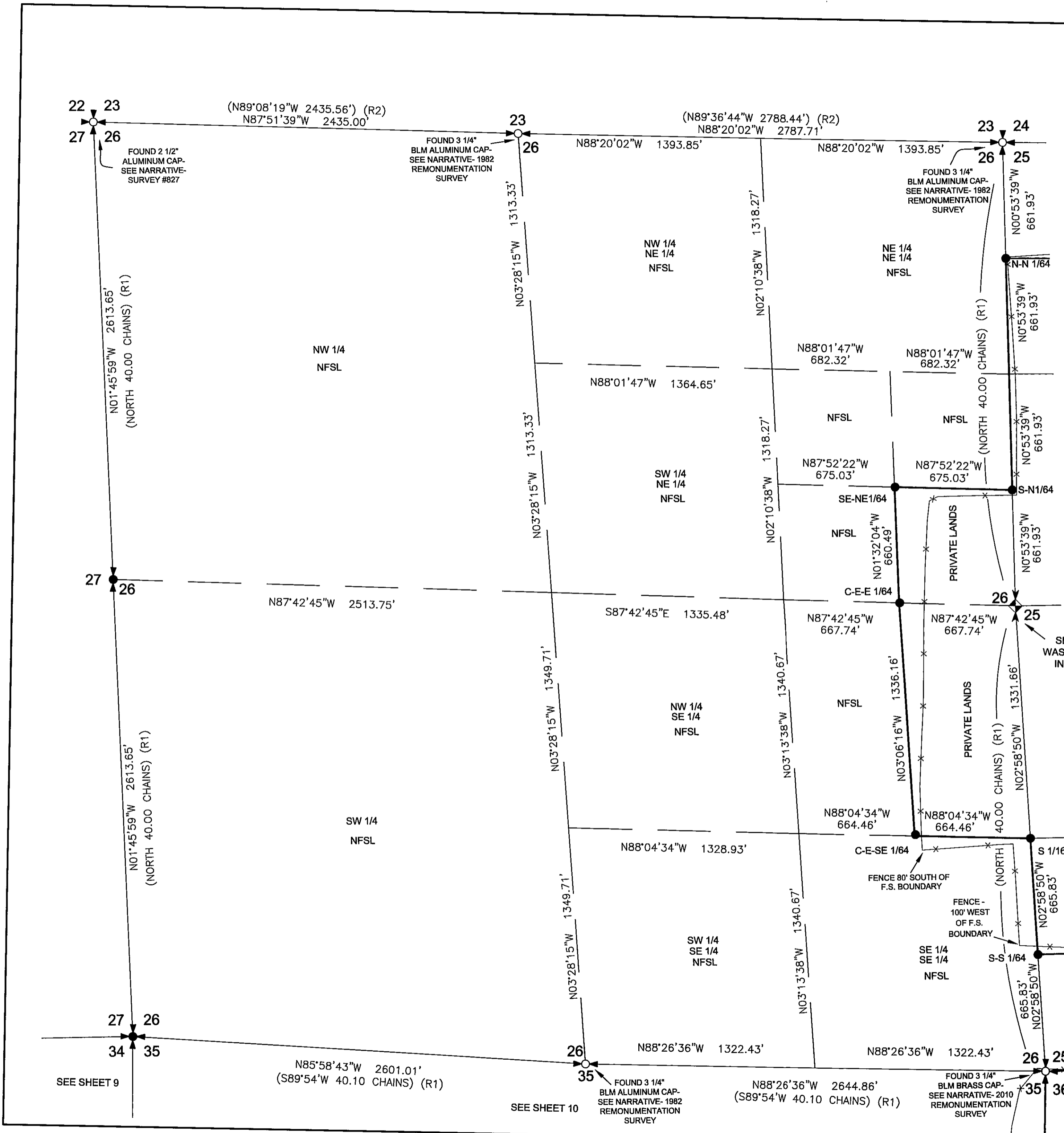
SURVEY FOR THE UMATILLA NATIONAL FOREST
KAHLER DRY FOREST RESTORATION PROJECT
LOCATED IN SECTIONS
19, 25, 26, 28, 29, 33, 34 & 35,
TOWNSHIP 8 SOUTH, RANGE 26 EAST
WILLAMETTE MERIDIAN, GRANT COUNTY, OREGON

SURVEY PERFORMED:
APRIL - SEPTEMBER 2014

DRAWN BY: RWF

SHEET 6 of 10

RECORD MAP OF SURVEY NO. 2026



22 23
27 26

(N89°08'19"W 2435.56') (R2)
N87°51'39"W 2435.00'

(N89°36'44"W 2788.44') (R2)
N88°20'02"W 2787.71'

23 24
26 25

23 26

N88°20'02"W 1393.85'

N88°20'02"W 1393.85'

FOUND 3 1/4" BLM ALUMINUM CAP-SEE NARRATIVE-1982 REMONUMENTATION SURVEY

FOUND 3 1/4" BLM ALUMINUM CAP-SEE NARRATIVE-1982 REMONUMENTATION SURVEY

N01°45'59"W 2613.65'
(NORTH 40.00 CHAINS) (R1)

NW 1/4
NFSL

NW 1/4
NE 1/4
NFSL

NE 1/4
NE 1/4
NFSL

N03°28'15"W 1313.33'

N02°10'38"W 1318.27'

FOUND 3 1/4" BLM ALUMINUM CAP-SEE NARRATIVE-1982 REMONUMENTATION SURVEY

N88°01'47"W 682.32'

N88°01'47"W 682.32'

N88°01'47"W 1364.65'

NFSL

NFSL

(NORTH 40.00 CHAINS) (R1)

N87°52'22"W 675.03'

N87°52'22"W 675.03'

N03°28'15"W 1313.33'

N02°10'38"W 1318.27'

FOUND 3 1/4" BLM ALUMINUM CAP-SEE NARRATIVE-1982 REMONUMENTATION SURVEY

N01°32'04"W 660.49'

FOUND 3 1/4" BLM ALUMINUM CAP-SEE NARRATIVE-1982 REMONUMENTATION SURVEY

27 26

N87°42'45"W 2513.75'

S87°42'45"E 1335.48'

N87°42'45"W 667.74'

N87°42'45"W 667.74'

SET A 1 1/4" ALUMINUM WASHER WITH A "MAG" NAIL INTO TOP OF ORIGINAL STONE

SW 1/4
NFSL

NW 1/4
SE 1/4
NFSL

NFSL

N03°28'15"W 1349.71'

N03°13'38"W 1340.67'

FOUND 3 1/4" BLM ALUMINUM CAP-SEE NARRATIVE-1982 REMONUMENTATION SURVEY

N88°04'34"W 664.46'

N88°04'34"W 664.46'

N88°04'34"W 1328.93'

C-E-SE 1/64

C-E-E 1/64

FOUND 3 1/4" BLM ALUMINUM CAP-SEE NARRATIVE-1982 REMONUMENTATION SURVEY

FENCE 80' SOUTH OF F.S. BOUNDARY

FENCE - 100' WEST OF F.S. BOUNDARY

FOUND 3 1/4" BLM ALUMINUM CAP-SEE NARRATIVE-1982 REMONUMENTATION SURVEY

SE 1/4
SE 1/4
NFSL

FOUND 3 1/4" BLM ALUMINUM CAP-SEE NARRATIVE-1982 REMONUMENTATION SURVEY

N03°28'15"W 1349.71'

N03°13'38"W 1340.67'

FOUND 3 1/4" BLM ALUMINUM CAP-SEE NARRATIVE-1982 REMONUMENTATION SURVEY

N88°26'36"W 1322.43'

N88°26'36"W 1322.43'

N88°26'36"W 1322.43'

FOUND 3 1/4" BLM ALUMINUM CAP-SEE NARRATIVE-1982 REMONUMENTATION SURVEY

(S89°54'W 40.10 CHAINS) (R1)

FOUND 3 1/4" BLM BRASS CAP-SEE NARRATIVE-2010 REMONUMENTATION SURVEY

SEE SHEET 9

SEE SHEET 10

27 26
34 35

N85°58'43"W 2601.01'
(S89°54'W 40.10 CHAINS) (R1)

(S89°54'W 40.10 CHAINS) (R1)