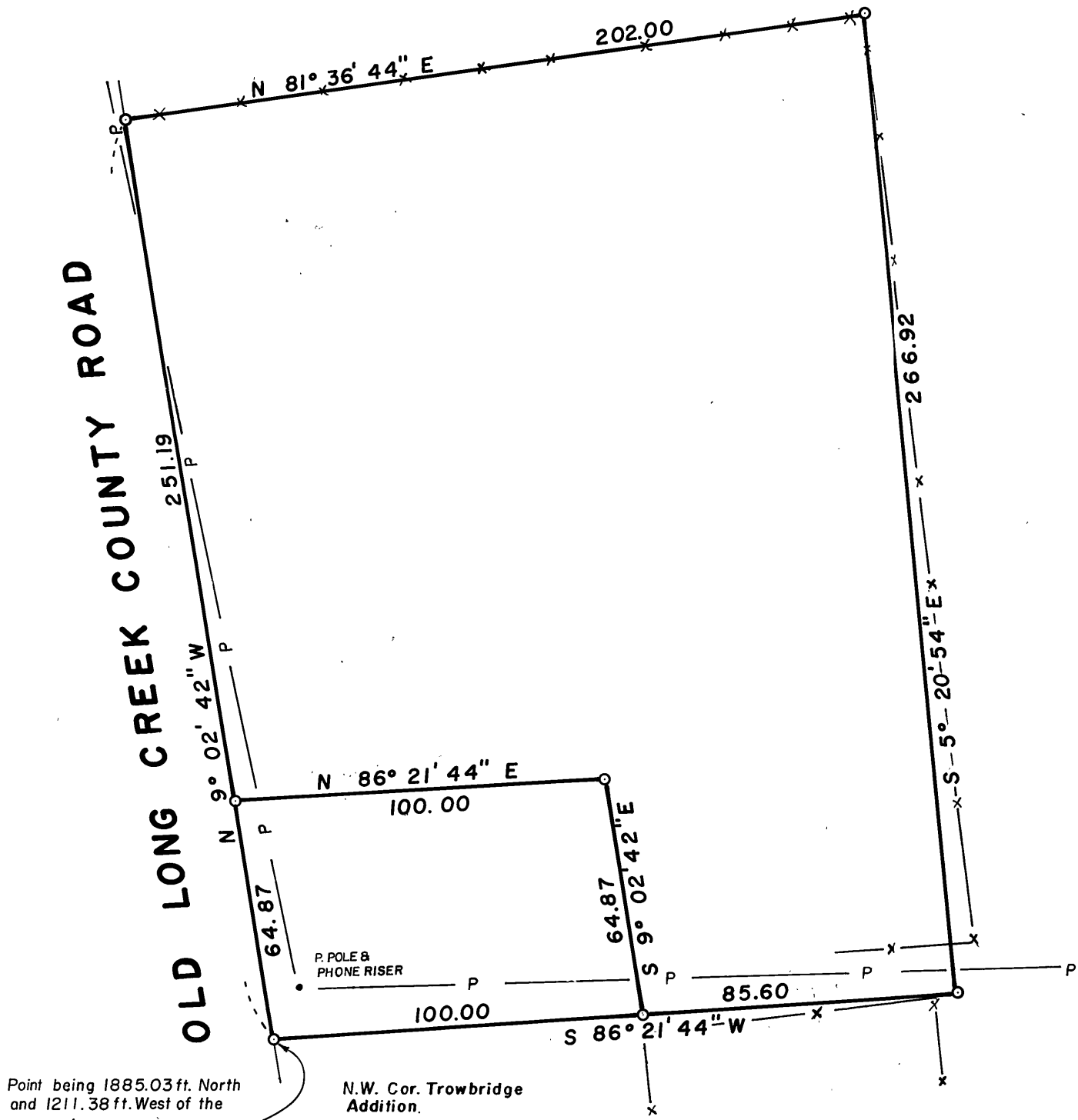


OLD LONG CREEK COUNTY ROAD



Point being 1885.03ft. North and 1211.38ft. West of the South 1/4 Cor. Sec. 23, T.13S., R.31E., W.M.

N.W. Cor. Trowbridge Addition.

REGISTERED PROFESSIONAL LAND SURVEYOR

Robert D. Bagett

OREGON
JULY 12, 1963
ROBERT D. BAGETT
598



BASIS OF BEARINGS
SOLAR OBSERVATION

RECEIVED AND FILED
JUN 7 1976

JOHN LIVEIRA, County Clerk

LEGEND *Betty Lowery* Deputy

- SET 5/8" X 30" IRON PIN
- x — FENCE
- P — POWER LINE

BAGETT, GRIFFITH & ASSOCIATES John Day, Oregon		
Map of Survey A PARCEL OF LAND IN THE NE 1/4 SW 1/4 SEC. 23, T.13S., R.31E., W.M. IN THE CITY OF JOHN DAY		
GRANT COUNTY, OREGON		
SURVEYED FOR	DALE HEHN	
SURVEYED BY	R.D.B. & W.G.	5/76
Scale: 1" = 40'	Drawn by: W.G.	5/76