

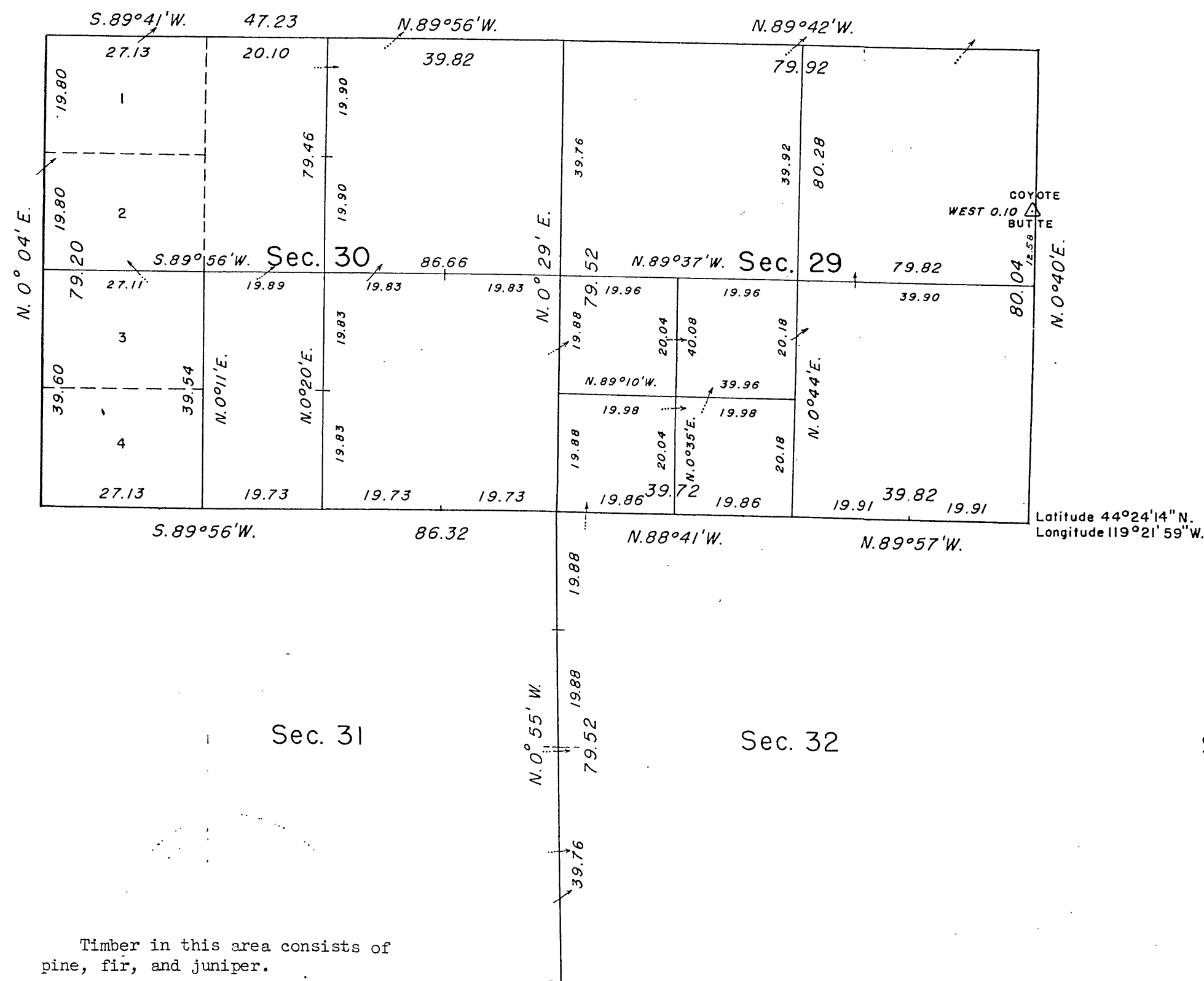
TOWNSHIP 13 SOUTH, RANGE 28 EAST, OF THE WILLAMETTE MERIDIAN, OREGON.

DEPENDENT RESURVEY AND PARTIAL SUBDIVISION

Sec. 19

Sec. 20

Sec. 21



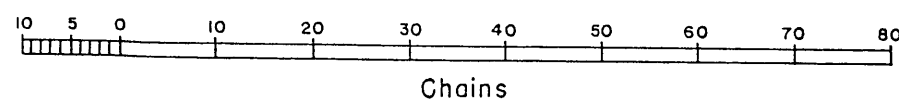
This plat represents a retracement and reestablishment of a portion of the west boundary and a portion of the subdivisional lines designed to restore the corners in their true original location according to the best available evidence. The lottings and areas are as shown on the plat approved March 31, 1874.

The south and west boundaries and subdivisional lines surveyed by Wm. H. Byars in 1873.

Dependent resurvey of a portion of the west boundary and dependent resurvey and partial subdivision of sections 29 and 30, executed by Hans W. Thielsen, October 9, 1957 to October 17, 1957, under Special Instructions dated August 29, 1957, which provide for the surveys included under Group 375, Oregon.

Latitude 44° 24' 14" N.
Longitude 119° 21' 59" W.

Timber in this area consists of pine, fir, and juniper.



Area resurveyed: 1,337.98 acres

UNITED STATES DEPARTMENT OF THE INTERIOR
BUREAU OF LAND MANAGEMENT
Washington, D.C. April 20, 1959

This plat is strictly conformable to the approved field notes, and the survey, having been correctly executed in accordance with the requirements of law and the regulations of this Bureau, is hereby accepted.

For the Director

Carl G. Harrington
Cadastral Engineering Staff Officer