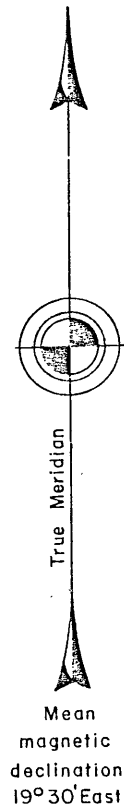
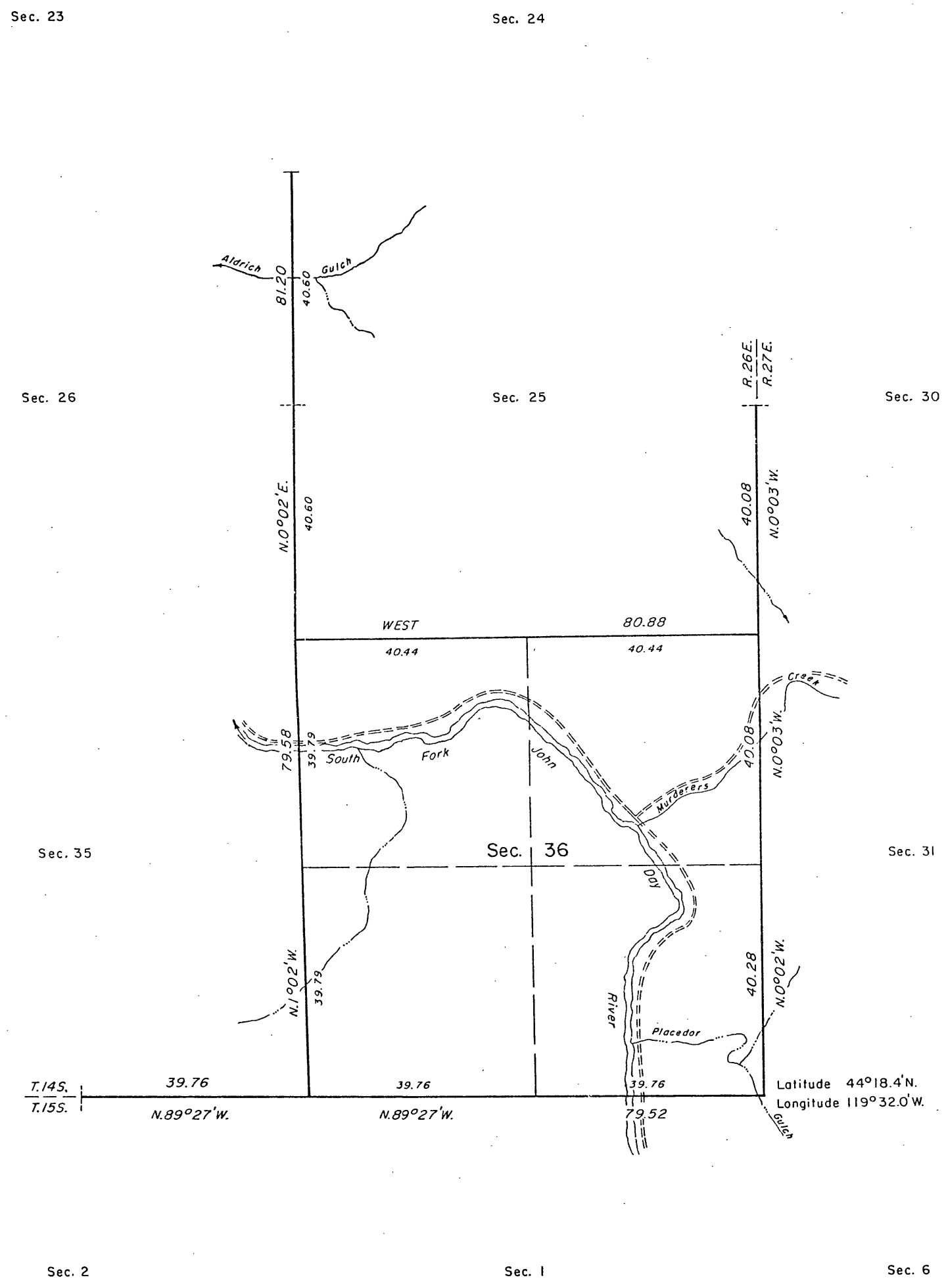


TOWNSHIP 14 SOUTH, RANGE 26 EAST, OF THE WILLAMETTE MERIDIAN, OREGON.

DEPENDENT RESURVEY



A history of surveys is contained in the field notes.

This plat represents a dependent resurvey of a portion of the south and east boundaries and subdivisional lines designed to restore the corners in their true original locations according to the best available evidence, T. 14 S., R. 26 E., Willamette Meridian, Oregon.

The lottings and areas are as shown on the plat approved March 7, 1882.

Survey executed by William D. Kimmel, Cadastral Surveyor, beginning April 2, 1980, and completed May 9, 1980, pursuant to Special Instructions dated February 27, 1980, for Group No. 1013 Oregon.

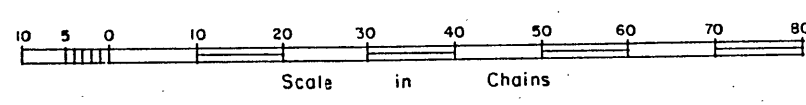
Timber in this area consists of juniper and fern.

UNITED STATES DEPARTMENT OF THE INTERIOR
BUREAU OF LAND MANAGEMENT
Portland, Oregon August 26, 1982

This plat is strictly conformable to the approved field notes, and the survey, having been correctly executed in accordance with the requirements of law and the regulations of this Bureau, is hereby accepted.

For the Director

William W. Glenn
Chief Cadastral Surveyor of Oregon



RECEIVED AND FILED

SEP 22 1982

OFFICE OF COUNTY SURVEYOR
Robert D. Dugger
Attest: *Darlene Simon*

MAP OF SURVEY NO. 730

rtb