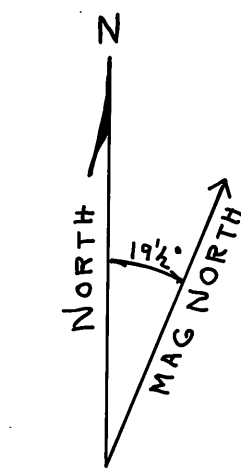


SURVEY FOR
U.S. FOREST SERVICE
GIMLET OLIVE CADASTRAL
CONTRACT NO. 53-04M3-2-2789
SECTION 24, T9S, R35E, W.M.
GRANT COUNTY, OREGON

DECEMBER 1, 1982

SCALE 1" = 500'

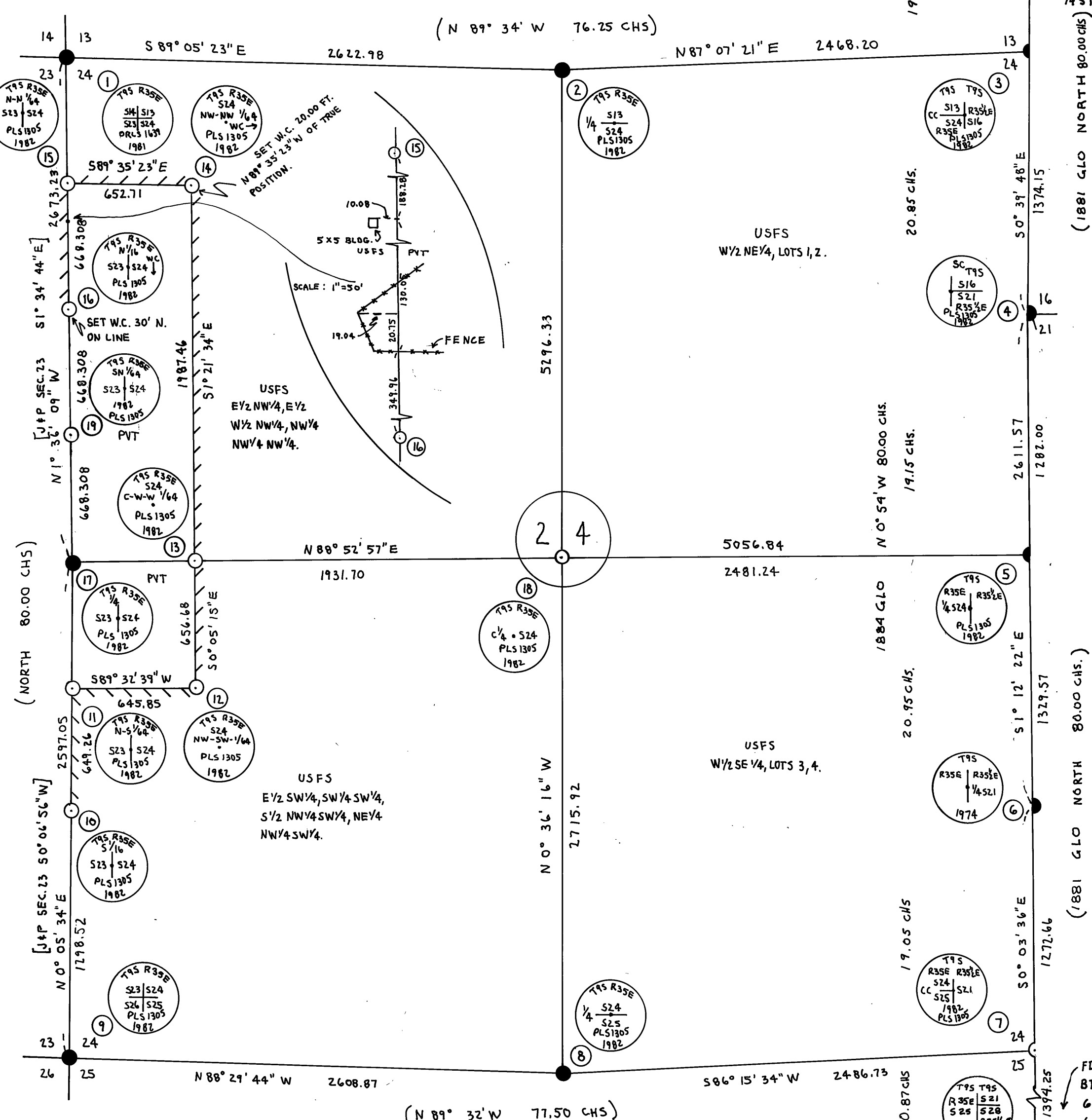
500 0 500
 152.40 M 152.40 M.
 1 METER = 3.28083 FT.



- LEGEND
- CORNER SET BY SURVEY
 - CORNER EVIDENCE FOUND
 - ▬▬▬ PROPERTY LINE POSTED WITH 6 FT. STEEL POSTS AND USFS SIGNS 54-2
 - () BEARINGS AND DISTANCES OF RECORD FROM ORIGINAL GLO SURVEY.

NOTE: ALL NEW BTS ARE FACED AND MARKED PER BLM MANUAL AND IN ADDITION HAVE A BRASS WASHER MARKED LS 1305 NAILED FLUSH IN LOWER BLAZE. ALL BTS ARE PAINTED WITH "L" RED BAND AND TAGGED WITH APPROPRIATE SIGNS. ALL CAPS ARE STAMPED AS PER BLM MANUAL PLUS THE TOWNSHIP, RANGE, 1982 AND PLS 1305. 6 FT. STEEL POSTS WITH APPROPRIATE SIGNS WERE SET 3 TO 5 FT. FROM ALL CORNERS AS PER CONTRACT. FIELD NOTES ARE IN BOOKS A, B, D, E, H, AND J CONTRACT NO. 53-04M3-2-2789. ORIGINAL AND BLM BTS AT CORNERS ③ AND ⑤ BEAR FROM ORIGINAL CORNER POSITION.

CORNER NO.	MONUMENT	ACCESSORIES
①	FOUND 2 1/2" BRASS CAP IN 1 1/2" IRON PIPE SET BY WILLIAM HANLEY, ORLS 1639.	FD. ORIGINAL BT: 24" SPRUCE (DOWN) BEARS S17°E 16.5 FT. FD. HANLEY BTS: 21" SPRUCE BEARS S1°E 46.7 FT; 10" LP PINE BEARS S58°W 46.5 FT; 7" LP PINE BEARS N11°W 30.7 FT.
②	FD. 2 1/2" GI PIPE PLUS PART OF ORIGINAL STONE AT CORNER POSITION. SET 2 1/2" BRASS CAP IN 2 1/2" X 30" GI PIPE - ROCK MOUND.	FD. ORIGINAL BT: 14" D. FIR BEARS N45°E 18.5 FT. SCRIBED BTS: 8" LARCH BEARS N80°W 48.8 FT, SCRIBED 1/4 S13 BT; 12" D. FIR BEARS S40°E 21.1 FT, SCRIBED 1/4 S24 BT.
③	FD. 3 1/2" BRASS CAP IN 2 1/2" GI PIPE SET BY BLM. SET 2 1/2" BRASS CAP IN 2 1/2" X 30" GI PIPE - ROCK MOUND - ON RANGE LINE 35 1/2" E - BLM MON. BRS. N 87°07' 22" E 20.76 FT.	FD. ORIGINAL BTS: 24" LARCH STUMP BEARS S31°W 54.8 FT; 3L" LARCH STUMP BEARS N24°W 14.4 FT. FD. BLM BTS: 12" LP PINE BEARS S33°W 8.1 FT; 10" P. PINE SNAG BEARS N55°W 22.4 FT. SCRIBED BTS: 9" W. FIR BEARS N67°W 38.4 FT, SCRIBED T9S R35E S13 BT; 7" W. FIR BEARS S43°W 21.2 FT, SCRIBED T9S R35E S24 BT.
④	FD. ORIGINAL STONE IN MOUND. SET 2 1/2" BRASS CAP IN 2 1/2" X 30" GI PIPE - ROCK MOUND.	SCRIBED BTS: 13" P. PINE BEARS N11°E 101.2 FT, SCRIBED T9S R35 1/2 E S16 BT; 10" D. FIR BEARS S50°E 78.2 FT, SCRIBED T9S R35 1/2 E S21 BT.
⑤	FD. 2 1/2" BRASS CAP IN 2 1/2" GI PIPE SET BY BLM. SET 2 1/2" BRASS CAP IN 2 1/2" X 30" GI PIPE - ROCK MOUND - ON RANGE LINE 35 1/2" E - BLM MON. BRS. S88°52'55"W 12.16 FT.	FD. ORIGINAL BTS: 24" FIR OUT OF POS. BEARS S30°W 31.7 FT; 3L" FIR STUMP BEARS N26°W 15.8 FT. FD. BLM BTS: 8" LP PINE BEARS S57°W 25.1 FT; 10" LP PINE SNAG BEARS N29°W 15.2 FT. SCRIBED BTS: 14" D. FIR BEARS N57°W 46.4 FT, SCRIBED 1/4 S24 BT; 5" D. FIR BEARS S49°W 37.7 FT, SCRIBED 1/4 S24 BT.
⑥	FD. 3 1/2" BRASS CAP IN 2 1/2" GI PIPE SET BY BLM	FD. ORIGINAL BTS: 14" LP PINE STUMP BEARS S30°E 31.7 FT; 22" LP PINE WINDTHROW BEARS N60°W 36.3 FT. FD. BLM BTS: 8" P. PINE SNAG BEARS N85°E 23.1 FT; 6" LP PINE WINDTHROW BEARS S42°E 13.9 FT. SCRIBED BTS: 10" P. PINE BEARS N2°E 79.2 FT, SCRIBED 1/4 S21 BT; 8" LP PINE BEARS N73°E 133.8 FT, SCRIBED 1/4 S21 BT.
⑦	SET 2 1/2" BRASS CAP IN 2 1/2" X 30" GI PIPE - ROCK MOUND.	SCRIBED BTS: 7" LP PINE BEARS N45°W 202.3 FT, SCRIBED T9S R35E S24 BT; 8" LP PINE BEARS S39°W 63.3 FT, SCRIBED T9S R35E S25 BT.
⑧	SET 2 1/2" BRASS CAP IN 2 1/2" X 30" GI PIPE - ROCK MOUND.	FD. ORIGINAL BTS: 8" LP PINE (DOWN) BEARS S20°E 15.2 FT; 12" LP PINE SNAG BEARS N17°E 21.8 FT. SCRIBED BTS: 15" D. FIR BEARS N31°E 13.9 FT, SCRIBED 1/4 S24 BT; 23" P. PINE BEARS S45°E 51.4 FT, SCRIBED 1/4 S25 BT.
⑨	FD. 4" X 4" POST WITH SCRIBING (NOT ORIGINAL) SET 2 1/2" BRASS CAP IN 2 1/2" X 30" GI PIPE.	FD. ORIGINAL BTS: 11" W. FIR BEARS N88°E 10.6 FT; 12" LARCH SNAG BEARS N82°W 20.5 FT. SCRIBED BTS: 8" D. FIR BEARS N8°W 46.1 FT, SCRIBED T9S R35E S23 BT; 9" D. FIR BEARS N58°E 38.7 FT, SCRIBED T9S R35E S24 BT; 6" W. FIR BEARS S44°E 28.7 FT, SCRIBED T9S R35E S25 BT; 8" W. FIR BEARS S47°W 37.0 FT, SCRIBED T9S R35E S26 BT.
⑩	SET 2 1/2" BRASS CAP IN 2 1/2" X 30" GI PIPE.	SCRIBED BTS: 11" LARCH BEARS S3°W 72.4 FT, SCRIBED S1/6 S23 BT; 11" W. FIR BEARS N84°E 59.8 FT, SCRIBED S1/6 S24 BT.
⑪	FD. 5/8" IRON ROD (NO RECORD) BEARS S42°E 1.73 FT. FROM TRUE CORNER. SET 2 1/2" BRASS CAP IN 2 1/2" X 30" GI PIPE - ROCK MOUND.	SCRIBED BTS: 5" W. FIR BEARS N59°E 34.7 FT, SCRIBED NS 1/64 S24 BT; 14" D. FIR BEARS N74°W 40.8 FT, SCRIBED NS 1/64 S23 BT.
⑫	SET 2 1/2" BRASS CAP IN 2 1/2" X 30" GI PIPE - ROCK MOUND.	SCRIBED BTS: 6" LARCH BEARS S32°W 14.8 FT, SCRIBED NW-SW 1/64 S24 BT; 10" LARCH BEARS S19°E 16.0 FT, SCRIBED NW-SW 1/64 S24 BT.
⑬	SET 2 1/2" BRASS CAP IN 2 1/2" X 30" GI PIPE.	SCRIBED BTS: 6" LP PINE BEARS S22°W 10.3 FT, SCRIBED C-W-W 1/64 S24 BT; 11" LARCH BEARS S81°E 60.6 FT, SCRIBED C-W-W 1/64 S24 BT.
⑭	SET W.C. (2 1/2" BRASS CAP IN 2 1/2" X 30" GI PIPE - ROCK MOUND) 20.00 FT. N89°35'23"W OF TRUE CORNER.	SCRIBED BTS: 14" E. SPRUCE BEARS N17°E 38.3 FT, SCRIBED X BT; 9" E. SPRUCE BEARS N59°W 44.4 FT, SCRIBED X BT.
⑮	SET 2 1/2" BRASS CAP IN 2 1/2" X 30" GI PIPE - ROCK MOUND.	SCRIBED BTS: 11" LARCH BEARS S82°W 40.0 FT, SCRIBED N-N 1/64 S23 BT; 8" E. SPRUCE BEARS N39°E 2.7 FT, SCRIBED N-N 1/64 S24 BT.
⑯	SET W.C. (2 1/2" BRASS CAP IN 2 1/2" X 30" GI PIPE - ROCK MOUND) 30.00 FT. NORTH ON LINE.	SCRIBED BTS: 8" W. FIR BEARS N45°W 69.0 FT, SCRIBED X BT; 8" W. FIR BEARS S87°W 92.4 FT, SCRIBED X BT.
⑰	FD. 2 1/2" GI PIPE AT CORNER POSITION (NO RECORD). SET 2 1/2" BRASS CAP IN 2 1/2" X 30" GI PIPE - ROCK MOUND.	FD. ORIGINAL BT: 9" LP PINE (DOWN) BEARS S15°W 7.9 FT. TO ROOT HOLE. FD. 1" D. FIR BEARS N44°30'E 27.7 FT. WITH TAG, NOT TRUE BT. SCRIBED BTS: 9" D. FIR BEARS N44°E 27.9 FT, SCRIBED 1/4 S24 BT; 12" D. FIR BEARS N61°W 29.0 FT, SCRIBED 1/4 S23 BT.
⑱	SET 2 1/2" BRASS CAP IN 2 1/2" X 30" GI PIPE - ROCK MOUND.	SCRIBED BTS: 22" P. PINE BEARS N38°E 162.2 FT, SCRIBED C 1/4 S24 BT; 8" D. FIR BEARS N83°E 166.5 FT, SCRIBED C 1/4 S24 BT.
⑳	SET 2 1/2" BRASS CAP IN 2 1/2" X 30" GI PIPE.	SCRIBED BTS: 7" LP PINE BEARS N51°W 39.7 FT, SCRIBED SN 1/64 S23 BT; 7" LP PINE BEARS N68°E 36.0 FT, SCRIBED SN 1/64 S24 BT.



NARRATIVE: THIS SURVEY IS A CLOSED TRAVERSE BY T-16 THEODOLITE AND DI-4 EDM AND T-1 THEODOLITE AND 300 FT. TAPE, MADE BY JACKSON & PROCHNAU INC, P.O. BOX 177, ALBANY, OREGON 97321. BASIS OF BEARINGS IS A SOLAR OBSERVATION. EXTERIOR AND SUBDIVISIONAL LINES OF TOWNSHIP 9 SOUTH RANGE 35 EAST WERE ORIGINALLY SURVEYED BY HERMAN GRADON IN 1884. EXTERIOR LINES OF TOWNSHIP 9 SOUTH RANGE 35 EAST WERE SURVEYED BY E.P. M'CORNACK IN 1881. FOLLOWING A THOROUGH SEARCH OF THE AREA THE S.E. SECTION CORNER (COR. NO. 7) WAS SET BY PROPORTIONAL MEASURE CONTROLLED BY THE WEST 1/4 SEC. 21 (COR. NO. 6) AND THE S.W. CORNER OF SECTION 21 T9S R35 1/2 E. THE N.E. SEC. CORNER (COR. NO. 3) AND THE EAST 1/4 (COR. NO. 5) WERE REMONUMENTED ON THE RANGE LINE AS SURVEYED BY M'CORNACK.

"I, JAMES W. PROCHNAU, A REGISTERED LAND SURVEYOR IN THE STATE OF OREGON, HEREBY CERTIFY THAT THIS PLAT AND THE NOTES HEREON, OR ATTACHED, ARE A CORRECT REPRESENTATION OF A SURVEY I PERFORMED DURING JUNE THROUGH NOVEMBER, 1982 FOR THE U.S. FOREST SERVICE, IN ACCORDANCE WITH THE STATUTES OF THE STATE OF OREGON AND WITH THE ARTICLES OF MY CONTRACT."

RECEIVED AND FILED

FEB 23 1983

OFFICE OF COUNTY SURVEYOR
 Attest: *[Signature]*

JAMES W. PROCHNAU
 P.L.S. 1305, OREGON

REGISTERED
**PROFESSIONAL
 LAND SURVEYOR**

[Signature]
 OREGON
 SEPTEMBER 23, 1977
 JAMES W. PROCHNAU
 1985