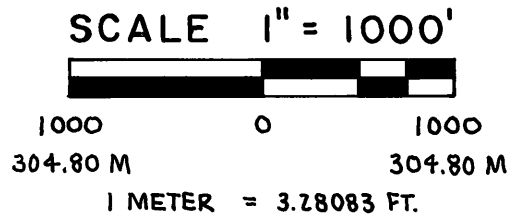
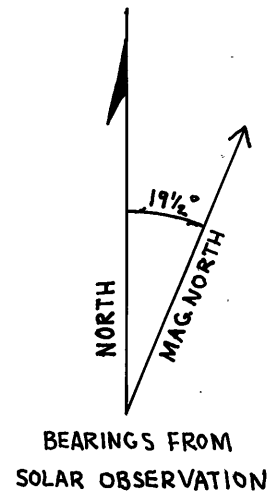


SURVEY FOR
U.S. FOREST SERVICE
GIMLET OLIVE CADASTRAL
CONTRACT NO. 53-04M3-2-2789
RANGE LINE RETRACEMENT

T9S
R35E | R35 1/2 E
GRANT COUNTY, OREGON

DECEMBER 29, 1982



CORNER NO.	MONUMENT	ACCESSORIES
①	FD. 2" ALUM. CAP IN 1" GI PIPE SET BY HANLEY.	FD. ORIGINAL BTS: 40" P. PINE STUMP BEARS S60°E 31.0 FT.; 27" P. PINE BEARS N55°W 73.3 FT. SCRIBED BT: 10" P. PINE BEARS S49°E 16.8 FT., SCRIBED 1/4 S4 BT.
②	FD. 2" ALUM. CAP IN 1" GI PIPE SET BY HANLEY-BEARS S 89° 14' 24" W 4.01 FT. FROM TRUE POSITION. SET 2 1/2" BRASS CAP IN 2 1/2" X 3 0" GI PIPE.	FD. ORIGINAL BT: 7" DOWN PINE BEARS N 52° W 59.4 FT. SCRIBED BTS: 10" ASPEN BEARS N 49° W 142.9 FT., BARK SCRIBED T9S R35E S1 BT; 7" LP PINE BEARS S 2° W 108.1 FT., SCRIBED T9S R35E S12 BT.
③	SET 2 1/2" BRASS CAP IN 2 1/2" X 3 0" GI PIPE - ROCK MOUND.	SCRIBED BTS: 10" LP PINE BEARS S34°E 61.4 FT., SCRIBED T9S R35 1/2 E S1 BT; 15" E. SPRUCE BEARS N58°E 73.3 FT., SCRIBED T9S R35 1/2 E S4 BT.
④	SET 2 1/2" BRASS CAP IN 2 1/2" X 3 0" GI PIPE - ROCK MOUND.	SCRIBED BTS: 5" LARCH BEARS S 2° W 33.9 FT., SCRIBED 1/4 S12 BT; 5" LARCH BEARS N72°W 4.5 FT., SCRIBED 1/4 S12 BT.
⑤	SET 2 1/2" BRASS CAP IN 2 1/2" X 3 0" GI PIPE - ROCK MOUND.	SCRIBED BTS: 8" W. FIR BEARS N 68° E 44.3 FT., SCRIBED 1/4 S9 BT; 7" W. FIR BEARS S 25° E 21.0 FT., SCRIBED 1/4 S9 BT.
⑥	FD. 3 1/2" BRASS CAP IN 2 1/2" GI PIPE SET BY BLM-BEARS N 89° 14' 24" W 2.84 FT. FROM TRUE POSITION. SET 2 1/2" BRASS CAP IN 2 1/2" X 3 0" GI PIPE - ROCK MOUND.	FD. BTS FROM BLM CAP: ORIGINAL 14" FIR BEARS S57°W 6.6 FT.; BLM BT 6" FIR BEARS N 56° W 17.8 FT. SCRIBED BTS: 8" W. FIR BEARS N 29° W 38.5 FT., SCRIBED T9S R35E S12 BT; 8" D. FIR BEARS S 86° W 22.3 FT., SCRIBED T9S R35E S13 BT.
⑦	FD. 3 1/2" BRASS CAP IN 2 1/2" GI PIPE SET BY BLM.	FD. ORIGINAL BTS: 20" D. FIR BEARS N 60° E 21.1 FT.; 21" W. FIR BEARS S 40° E 11.2 FT. FD. BLM BT: 8" LARCH BEARS S 5° E 43.4 FT. FD. 30" W. FIR SNAG BEARS S15°W 22.9 FT. - NO RECORD.
⑧	FD. 3 1/2" BRASS CAP IN 2 1/2" GI PIPE SET BY BLM-BEARS S 88° 52' 55" W 12.16 FT. FROM TRUE POSITION. SET 2 1/2" BRASS CAP IN 2 1/2" GI PIPE.	FD. BTS FROM BLM CAP: ORIGINAL 24" W. FIR BEARS N 37° W 35.0 FT.; BLM W. FIR BEARS S 60° W 26.4 FT. (DEAD). SCRIBED BTS: 8" W. FIR BEARS S55°W 34.2 FT., SCRIBED 1/4 S13 BT; 12" W. FIR BEARS N 54° W 11.7 FT., SCRIBED 1/4 S13 BT.
⑨	FD. 3 1/2" BRASS CAP IN 2 1/2" GI PIPE SET BY BLM.	FD. ORIGINAL BTS: 24" DEAD LARCH BEARS S 40° W 31.0 FT.; 31" DEAD P. PINE BEARS N15°E 102.3 FT. FD. BLM BT: 9" DOWN LP PINE BEARS N 35° E 6.6 FT. SCRIBED BTS: 8" W. FIR BEARS S 6° E 19.2 FT., SCRIBED 1/4 S16 BT; 10" W. FIR BEARS N 51° E 5.4 FT., SCRIBED 1/4 S16 BT.
⑩	FD. 3 1/2" BRASS CAP IN 2 1/2" GI PIPE SET BY BLM-BEARS N 81° 07' 22" E 20.76 FT. FROM TRUE POSITION. SET 2 1/2" BRASS CAP IN 2 1/2" X 3 0" GI PIPE - ROCK MOUND.	FD. BTS FROM BLM CAP: ORIGINAL 24" LARCH STUMP BEARS S31°W 54.8 FT.; ORIGINAL 36" LARCH STUMP BEARS N 24° W 16.4 FT.; BLM 12" LP PINE BEARS S 33° W 8.1 FT.; BLM 10" P. PINE SNAG BEARS N 55° W 22.4 FT. SCRIBED BTS: 9" W. FIR BEARS N 67° W 38.4 FT., SCRIBED T9S R35E S13 BT; 7" W. FIR BEARS S 43° W 21.2 FT., SCRIBED T9S R35E S24 BT.
⑪	FD. ORIGINAL STONE IN MOUND. SET 2 1/2" BRASS CAP IN 2 1/2" X 3 0" GI PIPE - ROCK MOUND, BURIED STONE.	SCRIBED BTS: 13" P. PINE BEARS N 11° E 101.2 FT., SCRIBED T9S R35 1/2 E S16 BT; 10" D. FIR BEARS S 50° E 78.2 FT., SCRIBED T9S R35 1/2 E S21 BT.

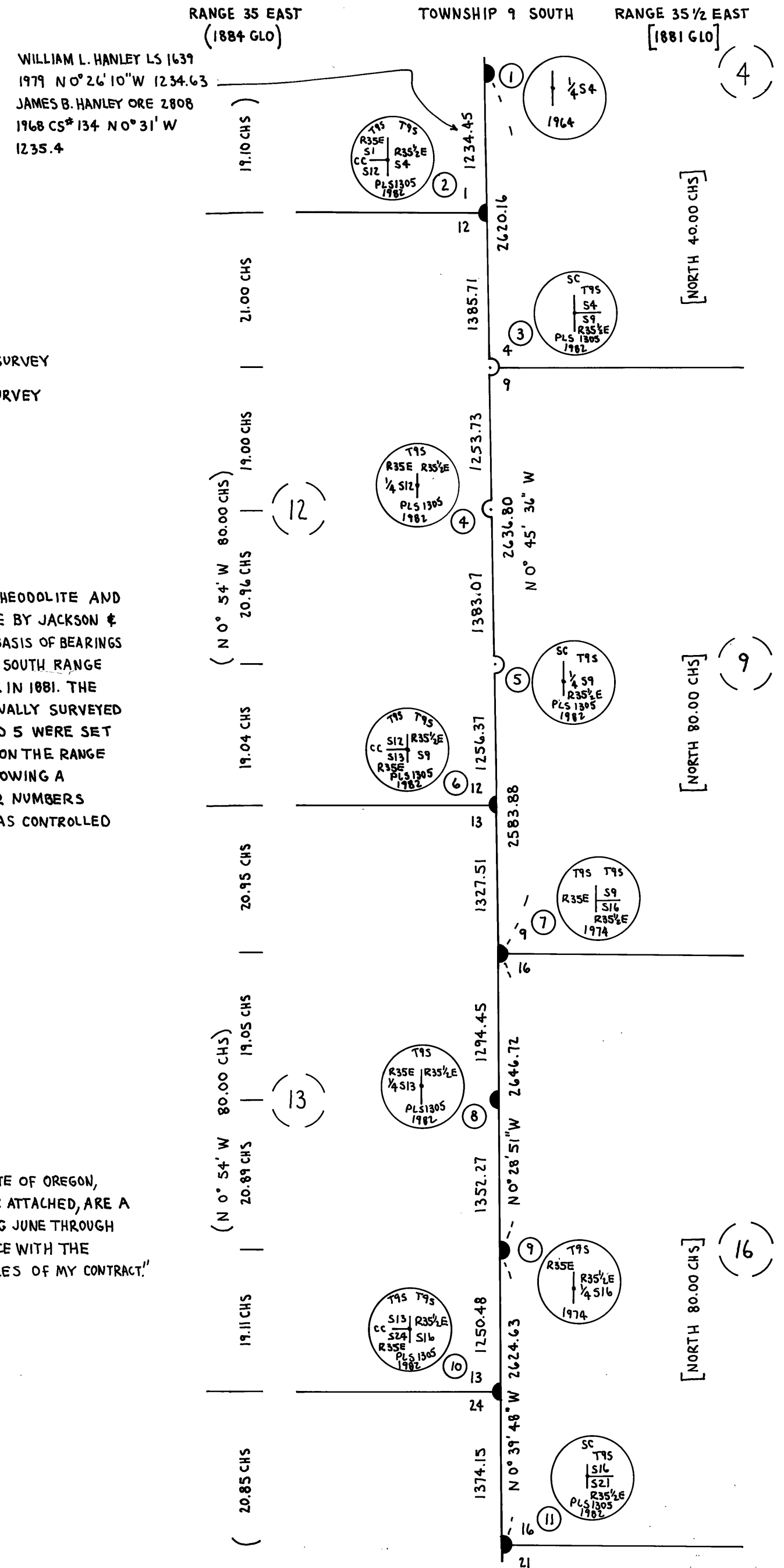
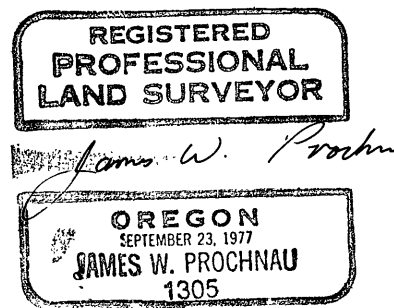
NOTE: ALL NEW BTS ARE FACED AND MARKED PER BLM MANUAL AND IN ADDITION HAVE A BRASS WASHER MARKED LS 1305 NAILED FLUSH IN LOWER BLAZE. ALL BTS ARE PAINTED WITH 6" RED BAND AND TAGGED WITH APPROPRIATE SIGNS. ALL CAPS ARE STAMPED AS PER BLM MANUAL PLUS THE TOWNSHIP, RANGE, 1982 AND PLS 1305. 6 FT. STEEL POSTS WITH APPROPRIATE SIGNS WERE SET 3 TO 5 FT. FROM ALL CORNERS AS PER CONTRACT. FIELD NOTES ARE IN BOOKS H, H-1, AND D CONTRACT NO. 53-04M3-2-2789. ORIGINAL AND BLM BTS AT CORNERS 6, 8, AND 10 BEAR FROM ORIGINAL CORNER POSITION.

- LEGEND**
- CORNER EVIDENCE FOUND
 - CORNER SET BY SURVEY
 - () BEARINGS AND DISTANCES OF ORIGINAL 1884 GLO SURVEY
 - [] BEARINGS AND DISTANCES OF ORIGINAL 1881 GLO SURVEY

NARRATIVE: THIS SURVEY IS A CLOSED TRAVERSE BY T-16 THEODOLITE AND DI-4 EDM, AND T-1 THEODOLITE AND 300 FT. TAPE, MADE BY JACKSON & PROCHNAU, INC. P.O. BOX 177 ALBANY, OREGON 97321. BASIS OF BEARINGS IS A SOLAR OBSERVATION. THE EXTERIOR OF TOWNSHIP 9 SOUTH RANGE 35 1/2 EAST WAS ORIGINALLY SURVEYED BY E. P. McCORNACK IN 1881. THE EXTERIOR OF TOWNSHIP 9 S RANGE 35 EAST WAS ORIGINALLY SURVEYED BY HERMAN D. GRADON IN 1884. CORNER NUMBERS 3, 4, AND 5 WERE SET AT PROPORTIONATE DISTANCES, FROM THE 1884 SURVEY, ON THE RANGE LINE CONTROLLED BY THE 1881 McCORNACK SURVEY FOLLOWING A THOROUGH SEARCH OF THE RESPECTIVE AREAS. CORNER NUMBERS 6, 8, AND 10 WERE REMONUMENTED ON THE RANGE LINE AS CONTROLLED BY THE 1881 SURVEY.

"I, JAMES W. PROCHNAU, A REGISTERED LAND SURVEYOR IN THE STATE OF OREGON, HEREBY CERTIFY THAT THIS PLAT AND THE NOTES HEREON, OR ATTACHED, ARE A CORRECT REPRESENTATION OF A SURVEY I PERFORMED DURING JUNE THROUGH NOVEMBER, 1982 FOR THE U.S. FOREST SERVICE, IN ACCORDANCE WITH THE STATUTES OF THE STATE OF OREGON AND WITH THE ARTICLES OF MY CONTRACT."

JAMES W. PROCHNAU
PL. S. 1305, OREGON



RECEIVED AND FILED

FEB 23 1983

OFFICE OF COUNTY SURVEYOR
Robert D. Baggett
Attest: *Mary M. Mauldin*

MAP OF SURVEY NO. 757