

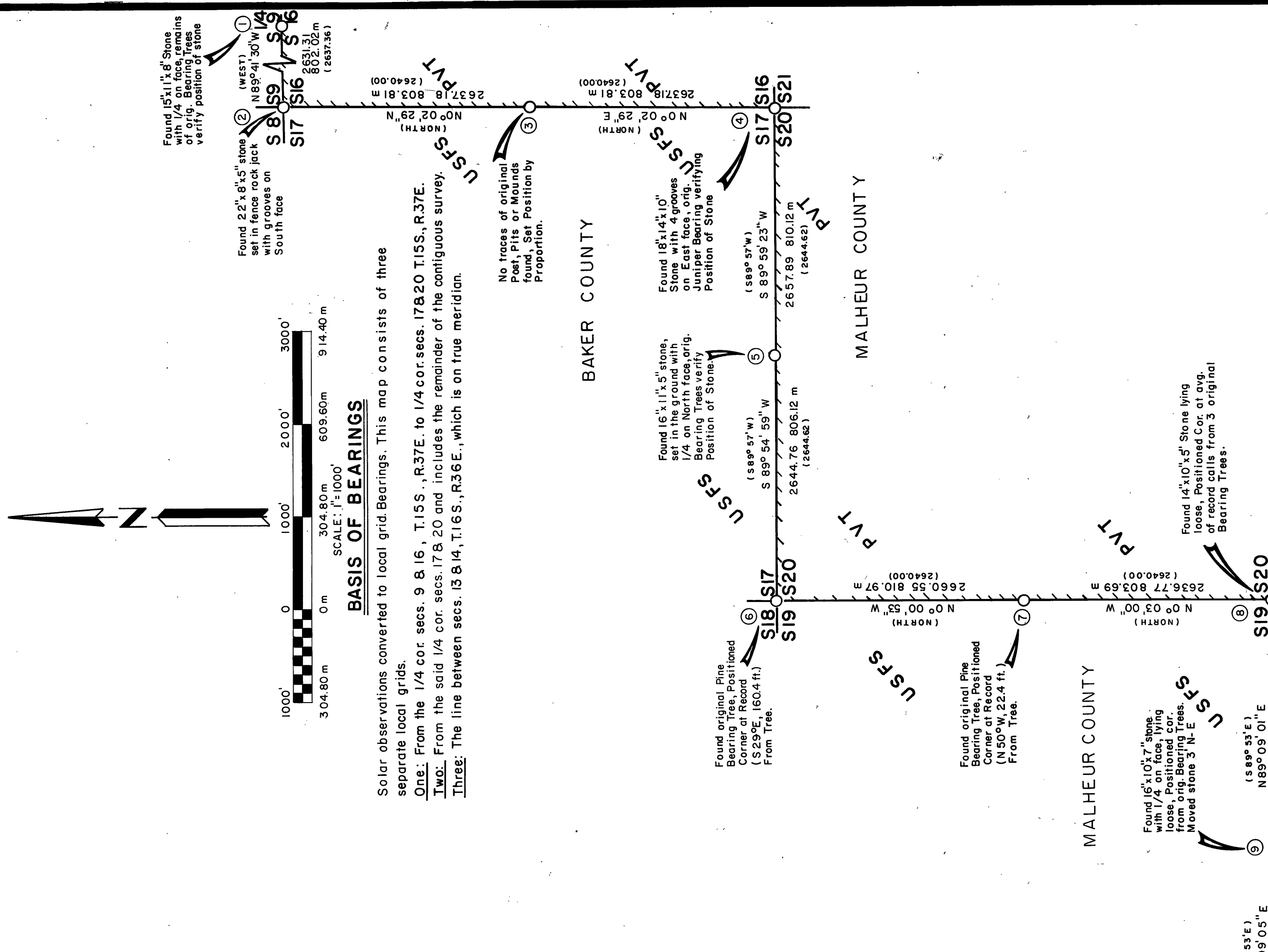
IRIS CADASTRAL SURVEY

See corresponding Number, in circle, on the map. Aluminum Cap Monuments as described in the LEGEND, stamped as shown. Bearing Trees are scribbled in accordance with the Bureau of Land Management, Manual of Surveying Instructions, of 1973. Noted Bearing Tree signs, Warning Signs & Brass Washers stamped PLS 848 to each Tree. Painted a 6" band around each tree. Set a minimum of one steel post with the appropriate Warning Signs & where applicable, Boundary Signs, in cardinal directions, within 10' from each corner.

See "Certified Record of Land Corner Monumentation" forms on file in the Grant, Baker & Malheur County Surveyors Offices for complete information on History, Evidence Found, Monument set & Accessories established.

MONUMENTATION

- 1 TISS R37E A Pine 12" dia. Bears N2°W, 16.8 ft. R36E R37E A Juniper 10" dia. Bears N33°W, 85.0 ft. S21S1 A Steel post with warning B.T. signs West, S 0 ft. PLS 848
- 2 TISS R37E S21S1 A Steel Post with Bearing Tree & Warning Signs, as follows: N45°W 3.8 ft., N45°E 4.9 ft., S45°E 8.6 ft. & S45°W 5.4 ft. PLS 848
- 3 TISS R37E S21S1 A Steel Post with Warning Sign, WEST 5.0 ft. PLS 848
- 4 S21S1 A Steel Post with Warning & Boundary Signs, NORTH 5.5 ft. & SOUTH 4.3 ft. PLS 848
- 5 TISS R37E S21S1 A Juniper (orig. Bearing Tree) Bears N2°W, 50.1 ft. S21S1 A " 9" dia. Bears N29°E, 21.3 ft. S21S1 A " 12" dia. Bears S 19°E, 28.6 ft. PLS 848
- 6 TISS R37E S21S1 A Steel Post with Warning Sign, WEST 5.0 ft. PLS 848
- 7 TISS R37E S21S1 A Mahogany 7" dia. Bears N10°W, 13.9 ft. S21S1 A " 6" dia. Bears SOUTH, 19.5 ft. PLS 848
- 8 TISS R37E S21S1 A Juniper 10" dia. Bears N 30 1/2°E, 134.9 ft. S21S1 A Steel Post Bears EAST, 3.6 ft. PLS 848
- 9 TISS R37E S21S1 A Pine 28" dia. Bears S82°E, 66.9 ft. A Juniper 7" dia. Bears S25°W, 70.4 ft. PLS 848
- 10 TISS R37E S21S1 A Mahogany 7" dia. Bears S22°E, 16.4 ft. S21S1 A Pine 10" dia. Bears N16°W, 9.9 ft. PLS 848
- 11 TISS R37E S21S1 A Fir 12" dia. Bears N29°E, 28.6 ft. S21S1 A " 8" dia. " N56°E, 3.8 ft. PLS 848
- 12 TISS R37E S21S1 A Pine 18" dia. (orig. B.T.) Bears S82°E, 22.6 ft. A " 32" dia. (orig. B.T.) " S75°W, 31.4 ft. PLS 848
- 13 TISS R37E S21S1 A Pine 13" dia. Bears N65°E, 28.5 ft. A Pine 10" dia. Bears S84°W, 19.4 ft. PLS 848
- 14 TISS R37E S21S1 A Juniper 9" dia. Bears N23°W, 5.6 ft. A Juniper 10" dia. Bears S4°W, 22.5 ft. PLS 848
- 15 TISS R37E S21S1 A Juniper 16" dia. Bears N26°E, 28.8 ft. A " 11" dia. Bears S79°E, 46.3 ft. PLS 848
- 16 TISS R37E S21S1 A Juniper 7" dia. Bears N82°W, 11.0 ft. PLS 848
- 17 TISS R37E S21S1 A Juniper 12" dia. Bears N2°W, 16.8 ft. S21S1 A " 10" dia. Bears N33°W, 85.0 ft. S21S1 A " 7" dia. Bears N25 1/2°E, 45.1 ft. S21S1 A " 10" dia. Bears S28 1/2°E, 29.6 ft. S21S1 A " 8" dia. Bears S68°E, 40.9 ft. S21S1 A " 8" dia. Bears S89°W, 46.4 ft. PLS 848
- 18 TISS R36E S21S1 A Juniper 12" dia. Bears N2°W, 16.8 ft. S21S1 A " 10" dia. Bears N33°W, 85.0 ft. S21S1 A " 7" dia. Bears N25 1/2°E, 45.1 ft. S21S1 A " 10" dia. Bears S28 1/2°E, 29.6 ft. S21S1 A " 8" dia. Bears S68°E, 40.9 ft. S21S1 A " 8" dia. Bears S89°W, 46.4 ft. PLS 848
- 19 TISS R36E S21S1 A Juniper 12" dia. Bears N2°W, 16.8 ft. S21S1 A " 10" dia. Bears N33°W, 85.0 ft. S21S1 A " 7" dia. Bears N25 1/2°E, 45.1 ft. S21S1 A " 10" dia. Bears S28 1/2°E, 29.6 ft. S21S1 A " 8" dia. Bears S68°E, 40.9 ft. S21S1 A " 8" dia. Bears S89°W, 46.4 ft. PLS 848
- 20 TISS R36E S21S1 A Juniper 12" dia. Bears N2°W, 16.8 ft. S21S1 A " 10" dia. Bears N33°W, 85.0 ft. S21S1 A " 7" dia. Bears N25 1/2°E, 45.1 ft. S21S1 A " 10" dia. Bears S28 1/2°E, 29.6 ft. S21S1 A " 8" dia. Bears S68°E, 40.9 ft. S21S1 A " 8" dia. Bears S89°W, 46.4 ft. PLS 848
- 21 TISS R36E S21S1 A Juniper 12" dia. Bears N2°W, 16.8 ft. S21S1 A " 10" dia. Bears N33°W, 85.0 ft. S21S1 A " 7" dia. Bears N25 1/2°E, 45.1 ft. S21S1 A " 10" dia. Bears S28 1/2°E, 29.6 ft. S21S1 A " 8" dia. Bears S68°E, 40.9 ft. S21S1 A " 8" dia. Bears S89°W, 46.4 ft. PLS 848
- 22 TISS R36E S21S1 A Juniper 12" dia. Bears N2°W, 16.8 ft. S21S1 A " 10" dia. Bears N33°W, 85.0 ft. S21S1 A " 7" dia. Bears N25 1/2°E, 45.1 ft. S21S1 A " 10" dia. Bears S28 1/2°E, 29.6 ft. S21S1 A " 8" dia. Bears S68°E, 40.9 ft. S21S1 A " 8" dia. Bears S89°W, 46.4 ft. PLS 848
- 23 TISS R36E S21S1 A Juniper 12" dia. Bears N2°W, 16.8 ft. S21S1 A " 10" dia. Bears N33°W, 85.0 ft. S21S1 A " 7" dia. Bears N25 1/2°E, 45.1 ft. S21S1 A " 10" dia. Bears S28 1/2°E, 29.6 ft. S21S1 A " 8" dia. Bears S68°E, 40.9 ft. S21S1 A " 8" dia. Bears S89°W, 46.4 ft. PLS 848
- 24 TISS R36E S21S1 A Juniper 12" dia. Bears N2°W, 16.8 ft. S21S1 A " 10" dia. Bears N33°W, 85.0 ft. S21S1 A " 7" dia. Bears N25 1/2°E, 45.1 ft. S21S1 A " 10" dia. Bears S28 1/2°E, 29.6 ft. S21S1 A " 8" dia. Bears S68°E, 40.9 ft. S21S1 A " 8" dia. Bears S89°W, 46.4 ft. PLS 848
- 25 TISS R36E S21S1 A Juniper 12" dia. Bears N2°W, 16.8 ft. S21S1 A " 10" dia. Bears N33°W, 85.0 ft. S21S1 A " 7" dia. Bears N25 1/2°E, 45.1 ft. S21S1 A " 10" dia. Bears S28 1/2°E, 29.6 ft. S21S1 A " 8" dia. Bears S68°E, 40.9 ft. S21S1 A " 8" dia. Bears S89°W, 46.4 ft. PLS 848
- 26 TISS R36E S21S1 A Juniper 12" dia. Bears N2°W, 16.8 ft. S21S1 A " 10" dia. Bears N33°W, 85.0 ft. S21S1 A " 7" dia. Bears N25 1/2°E, 45.1 ft. S21S1 A " 10" dia. Bears S28 1/2°E, 29.6 ft. S21S1 A " 8" dia. Bears S68°E, 40.9 ft. S21S1 A " 8" dia. Bears S89°W, 46.4 ft. PLS 848
- 27 TISS R36E S21S1 A Juniper 12" dia. Bears N2°W, 16.8 ft. S21S1 A " 10" dia. Bears N33°W, 85.0 ft. S21S1 A " 7" dia. Bears N25 1/2°E, 45.1 ft. S21S1 A " 10" dia. Bears S28 1/2°E, 29.6 ft. S21S1 A " 8" dia. Bears S68°E, 40.9 ft. S21S1 A " 8" dia. Bears S89°W, 46.4 ft. PLS 848
- 28 TISS R36E S21S1 A Juniper 12" dia. Bears N2°W, 16.8 ft. S21S1 A " 10" dia. Bears N33°W, 85.0 ft. S21S1 A " 7" dia. Bears N25 1/2°E, 45.1 ft. S21S1 A " 10" dia. Bears S28 1/2°E, 29.6 ft. S21S1 A " 8" dia. Bears S68°E, 40.9 ft. S21S1 A " 8" dia. Bears S89°W, 46.4 ft. PLS 848
- 29 TISS R36E S21S1 A Juniper 12" dia. Bears N2°W, 16.8 ft. S21S1 A " 10" dia. Bears N33°W, 85.0 ft. S21S1 A " 7" dia. Bears N25 1/2°E, 45.1 ft. S21S1 A " 10" dia. Bears S28 1/2°E, 29.6 ft. S21S1 A " 8" dia. Bears S68°E, 40.9 ft. S21S1 A " 8" dia. Bears S89°W, 46.4 ft. PLS 848
- 30 TISS R36E S21S1 A Juniper 12" dia. Bears N2°W, 16.8 ft. S21S1 A " 10" dia. Bears N33°W, 85.0 ft. S21S1 A " 7" dia. Bears N25 1/2°E, 45.1 ft. S21S1 A " 10" dia. Bears S28 1/2°E, 29.6 ft. S21S1 A " 8" dia. Bears S68°E, 40.9 ft. S21S1 A " 8" dia. Bears S89°W, 46.4 ft. PLS 848
- 31 TISS R36E S21S1 A Juniper 12" dia. Bears N2°W, 16.8 ft. S21S1 A " 10" dia. Bears N33°W, 85.0 ft. S21S1 A " 7" dia. Bears N25 1/2°E, 45.1 ft. S21S1 A " 10" dia. Bears S28 1/2°E, 29.6 ft. S21S1 A " 8" dia. Bears S68°E, 40.9 ft. S21S1 A " 8" dia. Bears S89°W, 46.4 ft. PLS 848
- 32 TISS R36E S21S1 A Juniper 12" dia. Bears N2°W, 16.8 ft. S21S1 A " 10" dia. Bears N33°W, 85.0 ft. S21S1 A " 7" dia. Bears N25 1/2°E, 45.1 ft. S21S1 A " 10" dia. Bears S28 1/2°E, 29.6 ft. S21S1 A " 8" dia. Bears S68°E, 40.9 ft. S21S1 A " 8" dia. Bears S89°W, 46.4 ft. PLS 848
- 33 TISS R36E S21S1 A Juniper 12" dia. Bears N2°W, 16.8 ft. S21S1 A " 10" dia. Bears N33°W, 85.0 ft. S21S1 A " 7" dia. Bears N25 1/2°E, 45.1 ft. S21S1 A " 10" dia. Bears S28 1/2°E, 29.6 ft. S21S1 A " 8" dia. Bears S68°E, 40.9 ft. S21S1 A " 8" dia. Bears S89°W, 46.4 ft. PLS 848
- 34 TISS R36E S21S1 A Juniper 12" dia. Bears N2°W, 16.8 ft. S21S1 A " 10" dia. Bears N33°W, 85.0 ft. S21S1 A " 7" dia. Bears N25 1/2°E, 45.1 ft. S21S1 A " 10" dia. Bears S28 1/2°E, 29.6 ft. S21S1 A " 8" dia. Bears S68°E, 40.9 ft. S21S1 A " 8" dia. Bears S89°W, 46.4 ft. PLS 848
- 35 TISS R36E S21S1 A Juniper 12" dia. Bears N2°W, 16.8 ft. S21S1 A " 10" dia. Bears N33°W, 85.0 ft. S21S1 A " 7" dia. Bears N25 1/2°E, 45.1 ft. S21S1 A " 10" dia. Bears S28 1/2°E, 29.6 ft. S21S1 A " 8" dia. Bears S68°E, 40.9 ft. S21S1 A " 8" dia. Bears S89°W, 46.4 ft. PLS 848
- 36 TISS R36E S21S1 A Juniper 12" dia. Bears N2°W, 16.8 ft. S21S1 A " 10" dia. Bears N33°W, 85.0 ft. S21S1 A " 7" dia. Bears N25 1/2°E, 45.1 ft. S21S1 A " 10" dia. Bears S28 1/2°E, 29.6 ft. S21S1 A " 8" dia. Bears S68°E, 40.9 ft. S21S1 A " 8" dia. Bears S89°W, 46.4 ft. PLS 848
- 37 TISS R36E S21S1 A Juniper 12" dia. Bears N2°W, 16.8 ft. S21S1 A " 10" dia. Bears N33°W, 85.0 ft. S21S1 A " 7" dia. Bears N25 1/2°E, 45.1 ft. S21S1 A " 10" dia. Bears S28 1/2°E, 29.6 ft. S21S1 A " 8" dia. Bears S68°E, 40.9 ft. S21S1 A " 8" dia. Bears S89°W, 46.4 ft. PLS 848
- 38 TISS R36E S21S1 A Juniper 12" dia. Bears N2°W, 16.8 ft. S21S1 A " 10" dia. Bears N33°W, 85.0 ft. S21S1 A " 7" dia. Bears N25 1/2°E, 45.1 ft. S21S1 A " 10" dia. Bears S28 1/2°E, 29.6 ft. S21S1 A " 8" dia. Bears S68°E, 40.9 ft. S21S1 A " 8" dia. Bears S89°W, 46.4 ft. PLS 848
- 39 TISS R36E S21S1 A Juniper 12" dia. Bears N2°W, 16.8 ft. S21S1 A " 10" dia. Bears N33°W, 85.0 ft. S21S1 A " 7" dia. Bears N25 1/2°E, 45.1 ft. S21S1 A " 10" dia. Bears S28 1/2°E, 29.6 ft. S21S1 A " 8" dia. Bears S68°E, 40.9 ft. S21S1 A " 8" dia. Bears S89°W, 46.4 ft. PLS 848
- 40 TISS R36E S21S1 A Juniper 12" dia. Bears N2°W, 16.8 ft. S21S1 A " 10" dia. Bears N33°W, 85.0 ft. S21S1 A " 7" dia. Bears N25 1/2°E, 45.1 ft. S21S1 A " 10" dia. Bears S28 1/2°E, 29.6 ft. S21S1 A " 8" dia. Bears S68°E, 40.9 ft. S21S1 A " 8" dia. Bears S89°W, 46.4 ft. PLS 848
- 41 TISS R36E S21S1 A Juniper 12" dia. Bears N2°W, 16.8 ft. S21S1 A " 10" dia. Bears N33°W, 85.0 ft. S21S1 A " 7" dia. Bears N25 1/2°E, 45.1 ft. S21S1 A " 10" dia. Bears S28 1/2°E, 29.6 ft. S21S1 A " 8" dia. Bears S68°E, 40.9 ft. S21S1 A " 8" dia. Bears S89°W, 46.4 ft. PLS 848
- 42 TISS R36E S21S1 A Juniper 12" dia. Bears N2°W, 16.8 ft. S21S1 A " 10" dia. Bears N33°W, 85.0 ft. S21S1 A " 7" dia. Bears N25 1/2°E, 45.1 ft. S21S1 A " 10" dia. Bears S28 1/2°E, 29.6 ft. S21S1 A " 8" dia. Bears S68°E, 40.9 ft. S21S1 A " 8" dia. Bears S89°W, 46.4 ft. PLS 848
- 43 TISS R36E S21S1 A Juniper 12" dia. Bears N2°W, 16.8 ft. S21S1 A " 10" dia. Bears N33°W, 85.0 ft. S21S1 A " 7" dia. Bears N25 1/2°E, 45.1 ft. S21S1 A " 10" dia. Bears S28 1/2°E, 29.6 ft. S21S1 A " 8" dia. Bears S68°E, 40.9 ft. S21S1 A " 8" dia. Bears S89°W, 46.4 ft. PLS 848
- 44 TISS R36E S21S1 A Juniper 12" dia. Bears N2°W, 16.8 ft. S21S1 A " 10" dia. Bears N33°W, 85.0 ft. S21S1 A " 7" dia. Bears N25 1/2°E, 45.1 ft. S21S1 A " 10" dia. Bears S28 1/2°E, 29.6 ft. S21S1 A " 8" dia. Bears S68°E, 40.9 ft. S21S1 A " 8" dia. Bears S89°W, 46.4 ft. PLS 848
- 45 TISS R36E S21S1 A Juniper 12" dia. Bears N2°W, 16.8 ft. S21S1 A " 10" dia. Bears N33°W, 85.0 ft. S21S1 A " 7" dia. Bears N25 1/2°E, 45.1 ft. S21S1 A " 10" dia. Bears S28 1/2°E, 29.6 ft. S21S1 A " 8" dia. Bears S68°E, 40.9 ft. S21S1 A " 8" dia. Bears S89°W, 46.4 ft. PLS 848
- 46 TISS R36E S21S1 A Juniper 12" dia. Bears N2°W, 16.8 ft. S21S1 A " 10" dia. Bears N33°W, 85.0 ft. S21S1 A " 7" dia. Bears N25 1/2°E, 45.1 ft. S21S1 A " 10" dia. Bears S28 1/2°E, 29.6 ft. S21S1 A " 8" dia. Bears S68°E, 40.9 ft. S21S1 A " 8" dia. Bears S89°W, 46.4 ft. PLS 848
- 47 TISS R36E S21S1 A Juniper 12" dia. Bears N2°W, 16.8 ft. S21S1 A " 10" dia. Bears N33°W, 85.0 ft. S21S1 A " 7" dia. Bears N25 1/2°E, 45.1 ft. S21S1 A " 10" dia. Bears S28 1/2°E, 29.6 ft. S21S1 A " 8" dia. Bears S68°E, 40.9 ft. S21S1 A " 8" dia. Bears S89°W, 46.4 ft. PLS 848
- 48 TISS R36E S21S1 A Juniper 12" dia. Bears N2°W, 16.8 ft. S21S1 A " 10" dia. Bears N33°W, 85.0 ft. S21S1 A " 7" dia. Bears N25 1/2°E, 45.1 ft. S21S1 A " 10" dia. Bears S28 1/2°E, 29.6 ft. S21S1 A " 8" dia. Bears S68°E, 40.9 ft. S21S1 A " 8" dia. Bears S89°W, 46.4 ft. PLS 848
- 49 TISS R36E S21S1 A Juniper 12" dia. Bears N2°W, 16.8 ft. S21S1 A " 10" dia. Bears N33°W, 85.0 ft. S21S1 A " 7" dia. Bears N25 1/2°E, 45.1 ft. S21S1 A " 10" dia. Bears S28 1/2°E, 29.6 ft. S21S1 A " 8" dia. Bears S68°E, 40.9 ft. S21S1 A " 8" dia. Bears S89°W, 46.4 ft. PLS 848
- 50 TISS R36E S21S1 A Juniper 12" dia. Bears N2°W, 16.8 ft. S21S1 A " 10" dia. Bears N33°W, 85.0 ft. S21S1 A " 7" dia. Bears N25 1/2°E, 45.1 ft. S21S1 A " 10" dia. Bears S28 1/2°E, 29.6 ft. S21S1 A " 8" dia. Bears S68°E, 40.9 ft. S21S1 A " 8" dia. Bears S89°W, 46.4 ft. PLS 848



LEGEND

○ Set 30"x2" Aluminum Pipe With 3-1/2" Aluminum Cap

Property Line Marked by Setting Steel Fence Posts with Boundary Signs at max. intervals of 250 ft.

() Record Bearing or Distance, by G. L. O. Surveyor, Henry W. Cooke.

* () Record Bearing or Distance, by G. L. O. Surveyor, Eugene P. McCormack.

HISTORY

South exterior, T15S, R36E., originally surveyed commencing Aug. 5, 1881, by Eugene P. McCormack, under General Land Office Contract No. 398.

East exterior, T15S, R. 36E., originally surveyed, commencing Aug 20, 1881, by Eugene P. McCormack, under General Land Office Contract No. 398.

Subdivision, T15S, R. 36E., originally surveyed, commencing Aug. 24, 1881, by Eugene P. McCormack, under General Land Office Contract No. 398.

Subdivision, T16S, R. 36E., originally surveyed, commencing Nov. 26, 1881, by Henry W. Cooke, under General Land Office Contract No. 422.

Subdivision, T15S, R. 37E., originally surveyed, commencing Aug. 4, 1884, by Henry W. Cooke, under General Land Office Contract No. 512.

Retracement of West exterior T15S, R. 37E., originally surveyed, commencing Sept. 24, 1884, by Henry W. Cooke, under General Land Office Contract No. 512.

NARRATIVE

The purpose of this survey is the location, marking & perpetuation of the Forest Boundary & the Land Corners along and controlling those boundaries. In order to accomplish this a control survey is run through all known corners, through areas where search for controlling & boundary corners is required, through areas where corners are to be established and along boundary lines to be marked & posted. Electronic Distance Measuring Equipment & Theodolites are used in running the control survey. The needed property & controlling corners are then recovered or reestablished from recovered controlling corners. Last original corners are restored in accordance with Chapter X, of the Bureau of Land Management, "Manual of Surveying Instructions" of 1973.

While Subdividing T15S, R. 37E., (see history, above) Henry W. Cooke found the West boundary, as originally surveyed by Eugene P. McCormack, to be out of limits for acceptable accuracy. He therefor re-surveyed that line as follows:

Running Northerly through corners as set by McCormack, Cooke set section corners at record 80 chain intervals, changing direction of each section corner as established by McCormack. Running from section corner to section corner & establishing an additional set of corners common to R. 37E., on line between corners established by McCormack, which are common to R. 36E., Cooke did not change direction when running through McCormack's corners, but called them at a distance, on line between McCormack's section corners.

In reestablishing the lost, East 1/4 cor. sec. 25, T. 15S, R. 36E., as originally established by McCormack and the lost cor. sec. 19 & 30, T. 15S, R. 37E., as originally established by Cooke as described above, those corners are positioned by single proportion cor. secs. 24 & 25 and cor. secs. 25 & 26, using record distances of the resurvey by Henry W. Cooke.

The corners established or reestablished along the Third Standard Parallel South are placed on the Latitudinal Line between the Standard South 1/4 cor. sec. 34 & the Standard cor. sec. 35 & 36, T. 15S., R. 36E.

I Douglas M. Ferguson, hereby certify that this plat and the notes hereon or attached are a correct representation of a survey I performed during Aug. 1982 - July 1983, for the U.S. Forest Service, in accordance with the statutes of the State of Oregon and the articles of my contract, No. 53-04H1-2-83EN Douglas M. Ferguson P.L.S. 848

REGISTERED PROFESSIONAL LAND SURVEYOR
DOUGLAS M. FERGUSON
OREGON
O.C.S. 1011
O.C.S. 1012

RECEIVED AND FILED
AUG 29 1983
OFFICE OF COUNTY SURVEYOR
Attest: *[Signature]*

FERGUSON SURVEYING & ENGINEERING
M.T. VERNON, OR.

MAP OF SURVEY
RETRACEMENT & LOCATION OF
BOUNDARY CORNERS OF NATIONAL
FOREST LANDS, T15S, R36E, T15S, R37E, &
T16S, R36E IN GRANT COUNTY, BAKER COUNTY
& MALHEUR COUNTY OREGON

FOR MALHEUR NATIONAL FOREST BY DOUGLAS M. FERGUSON
DATE: JULY 1983 SHEET 1 OF 1
SCALE: 1" = 1000' DRAWN BY DOUGLAS M. FERGUSON

MAP OF SURVEY NO. 783