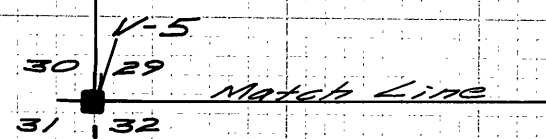


See Sheet 2 of 2



**NARRATIVE**

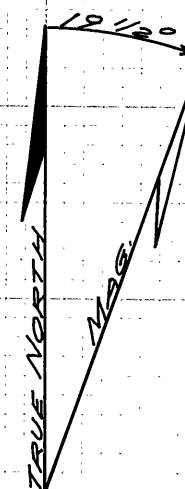
The purpose of this survey was to establish or find corner positions and mark the boundary between privately owned land and National Forest. Control was established from random, closed traverse loops with unadjusted precisions ranging from 1/9000 to 1/50000. Posting was accomplished by offsets to true line from random traverse or by posting along true line in open areas where intervisible line points could be positioned. Bearings to bearing trees were taken with a staff compass using an Easterly declination of 19 1/2°. No unusual conditions were encountered.

References  
Government Land Office Notes

Personnel  
George Colvin  
Bobbie Colvin

Instrumentation  
Wild T-15 Theodolite  
Topcon DM-51 EDM  
K&E Staff Compass  
50', 100', 300' Steel Band Tapes

Date of completion  
June 29, 1986



**RECORD OF SURVEY**

FOR MALHEUR NATIONAL FOREST

LOCATED IN SECTIONS 29 & 32, T.13S,  
R.35E, W.M. AND SECTIONS 4 & 5, T.14S,  
R.35E, W.M.

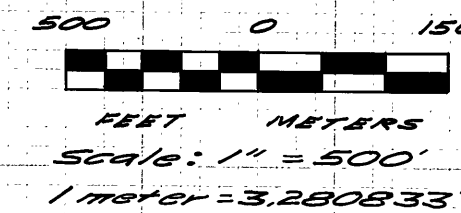
GRANT COUNTY, OREGON

JULY 5, 1986

CONTRACT No. 53-04H1-5-0180N

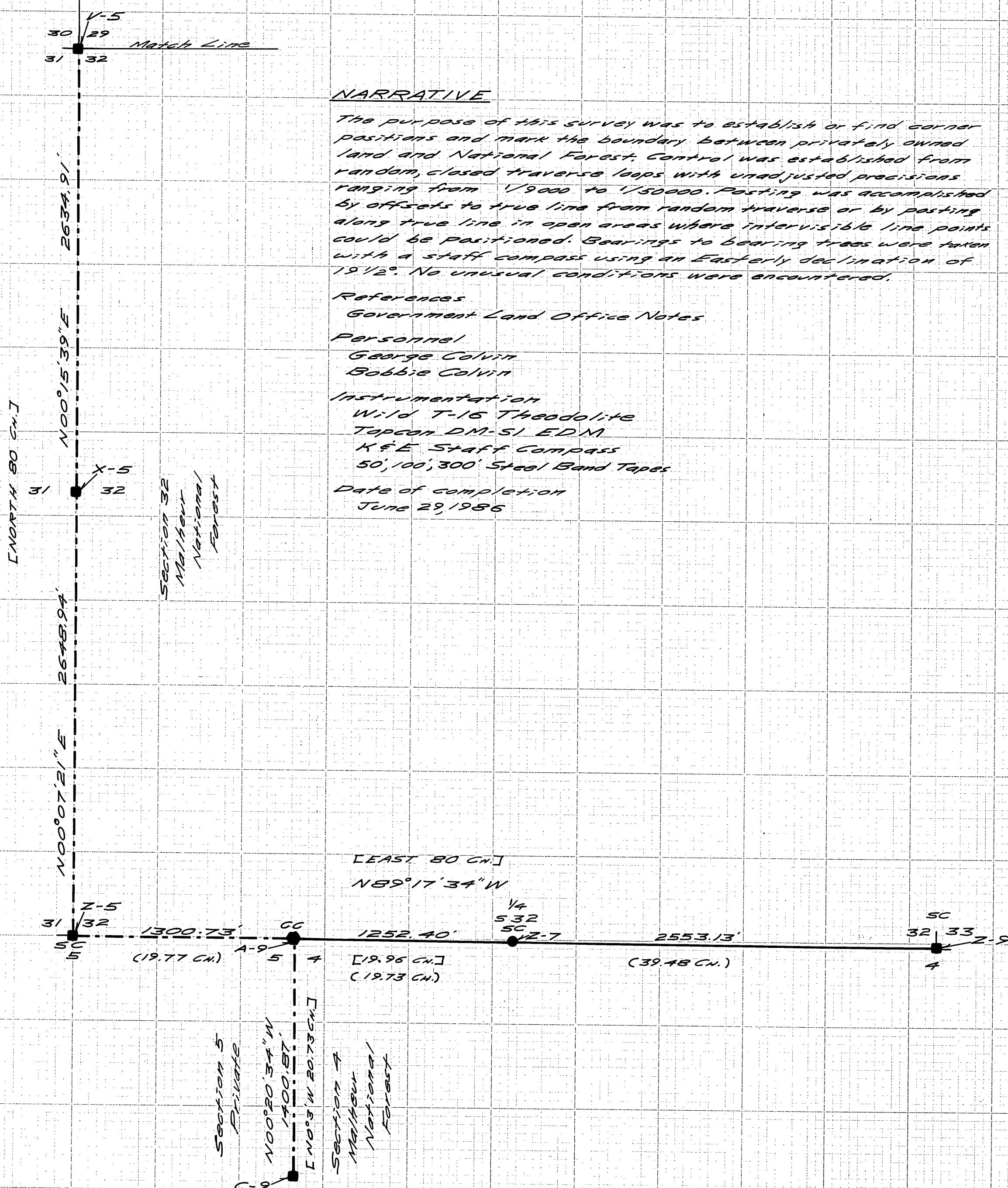
ORANGE CADASTRAL SURVEY

Bearings are based on Solar Observation  
5/30/86 at 44°24'12" N. Lat. and 118°30'  
11" W. Long.



**LEGEND**

- = 2 1/2" x 30" Aluminum Pipe with 3" Aluminum Cap set from original evidence.
- = 2 1/2" x 30" Aluminum Pipe with 3" Aluminum Cap set at Closing Corner on Correction Line.
- = 2 1/2" x 30" Aluminum Pipe with 3" Aluminum cap set by proportionate methods.
- ▲ = Monument found and held this survey as shown on plat.
- = Property line posted to U.S.F.S. standards using metal fence posts with U.S.F.S. signs 54-2 attached.
- [ ] = Orig. survey data, G.L.O.
- C ] = Retracement data, G.L.O.



RECEIVED AND FILED

SEP 8 1986  
OFFICE OF COUNTY SURVEYOR  
Grant County, Oregon

REGISTERED PROFESSIONAL LAND SURVEYOR  
George Colvin  
OREGON  
FEBRUARY 14, 1975  
GEORGE W. COLVIN, JR.  
1020  
7/5/86

SHEET 1 OF 2  
GEORGE COLVIN  
LAND SURVEYOR  
20602 COVENTRY CIRCLE  
BEND, OREGON 97702  
PHONE: 352-2039