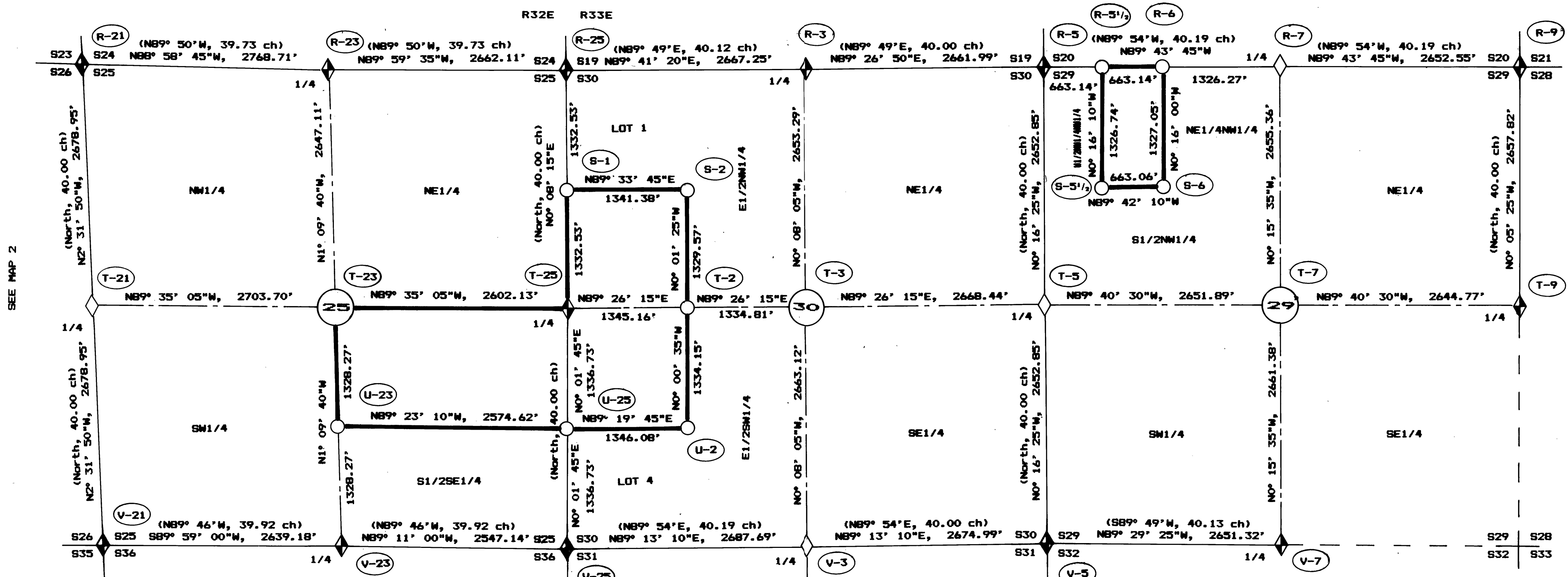


MAP OF SURVEY

SUBDIVISION OF SECTION 25, T9S, R32E AND SECTIONS 29, 30 & 31, T9S, R33E, WM



SEE MAP 2

CERTIFICATION

I, Leland Lee Myers, a Professional Land Surveyor registered in the State of Oregon, office located at 587 E. Auburn St., P.O. Box 98, Sumpter, OR 97877, do hereby certify that I did perform this survey July 25 to October 17, 1986, as a contractor at the request of the USDA-Forest Service by Arm Cadastral Survey Contract No. 53-04H1-5-0149N and that the information shown hereon is correct to the best of my knowledge.

REGISTERED PROFESSIONAL LAND SURVEYOR
 OREGON
 JULY 9, 1955
 LELAND LEE MYERS
 699



Basis for Bearings
 Solar Observation
 Assumed Magnetic Declination 18° 30'E



RECEIVED AND FILED
 FEB 23 1987
 OFFICE OF COUNTY SURVEYOR

LEGEND

- Section & 1/4 Corners Set by Found Evidence
- Section & 1/4 Corners Set by Survey
- 1/4 Corners Set by Survey
- Section Subdivision Corners Set by Survey
- Posted National Forest Boundary Lines
- Section Lines
- Center Section Lines
- Projected Lines
- Legal Subdivision of USFS Property
- Record Bearing & Distance in Parentheses (S89° 56'W, 40.13 ch)
- Certified Corner Record Index No.
 See Corner Restoration Records
- Monuments Set are 2" Aluminum Pipe with 3/4" Aluminum Cap

See NARRATIVE OF SURVEY on Map 2