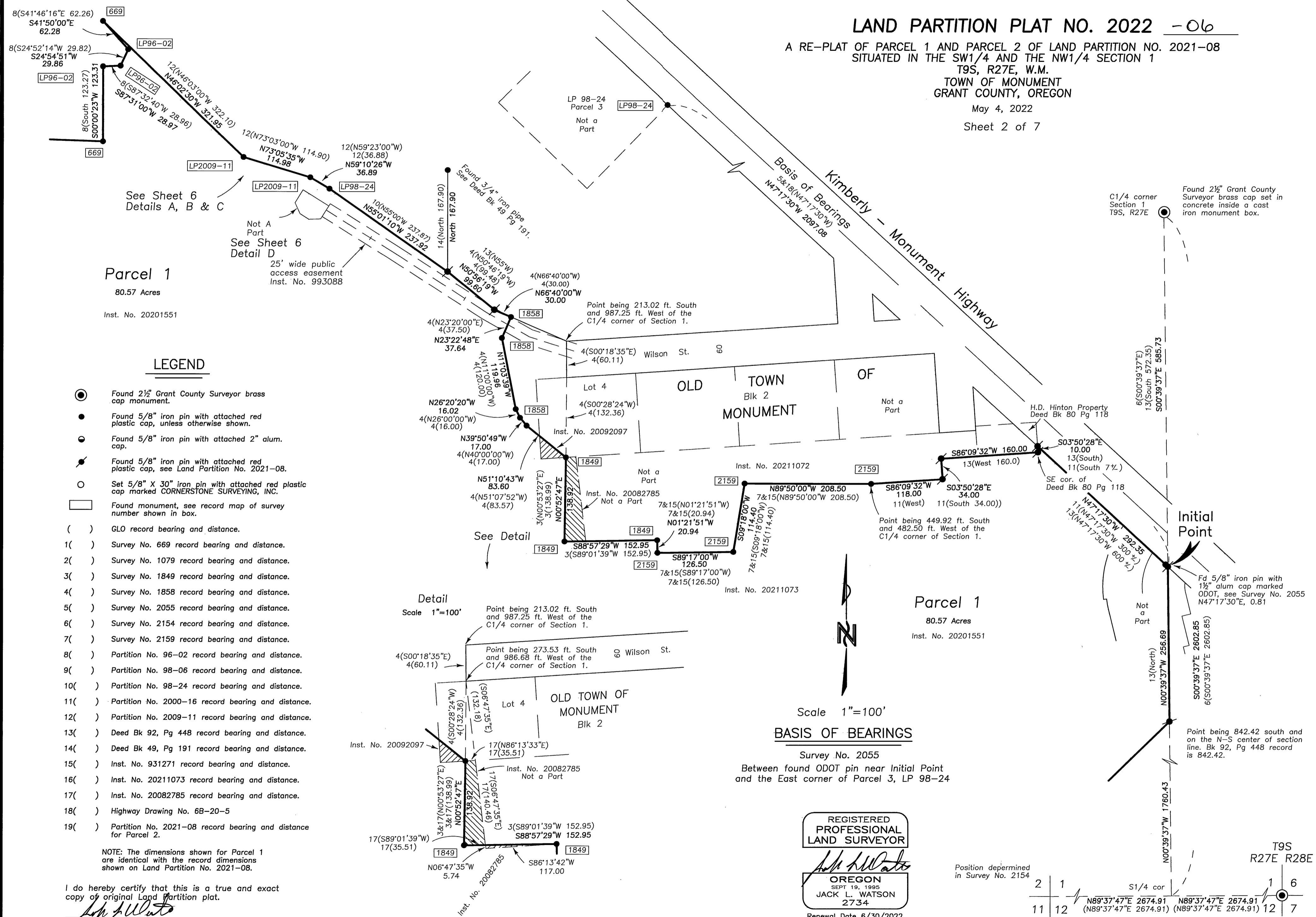


LAND PARTITION PLAT NO. 2022 - 06

A RE-PLAT OF PARCEL 1 AND PARCEL 2 OF LAND PARTITION NO. 2021-08
SITUATED IN THE SW1/4 AND THE NW1/4 SECTION 1
T9S, R27E, W.M.
TOWN OF MONUMENT
GRANT COUNTY, OREGON

May 4, 2022
Sheet 2 of 7



Parcel 1
80.57 Acres
Inst. No. 20201551

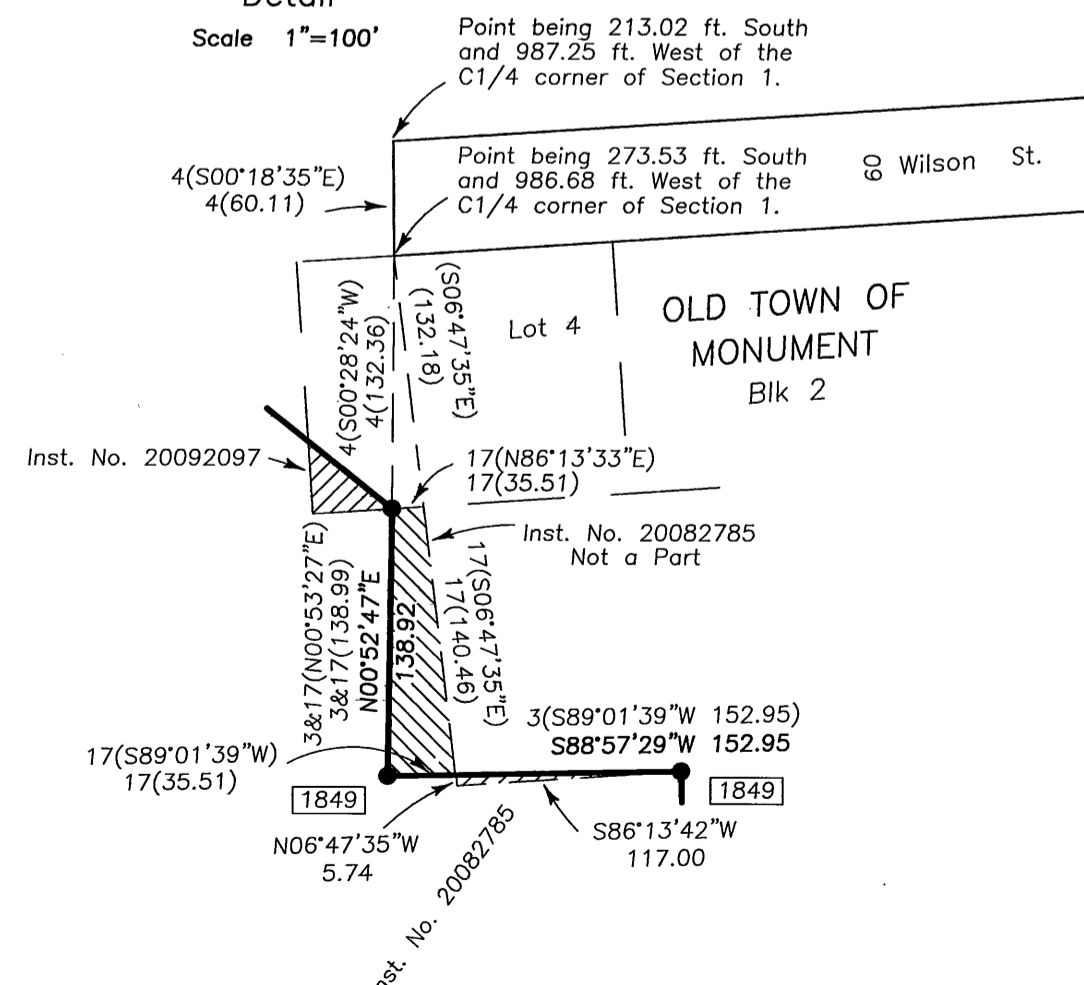
LEGEND

- Found 2 1/2" Grant County Surveyor brass cap monument.
- Found 5/8" iron pin with attached red plastic cap, unless otherwise shown.
- Found 5/8" iron pin with attached 2" alum. cap.
- Found 5/8" iron pin with attached red plastic cap, see Land Partition No. 2021-08.
- Set 5/8" X 30" iron pin with attached red plastic cap marked CORNERSTONE SURVEYING, INC.
- Found monument, see record map of survey number shown in box.
- () GLO record bearing and distance.
- 1() Survey No. 669 record bearing and distance.
- 2() Survey No. 1079 record bearing and distance.
- 3() Survey No. 1849 record bearing and distance.
- 4() Survey No. 1858 record bearing and distance.
- 5() Survey No. 2055 record bearing and distance.
- 6() Survey No. 2154 record bearing and distance.
- 7() Survey No. 2159 record bearing and distance.
- 8() Partition No. 96-02 record bearing and distance.
- 9() Partition No. 98-06 record bearing and distance.
- 10() Partition No. 98-24 record bearing and distance.
- 11() Partition No. 2000-16 record bearing and distance.
- 12() Partition No. 2009-11 record bearing and distance.
- 13() Deed Bk 92, Pg 448 record bearing and distance.
- 14() Deed Bk 49, Pg 191 record bearing and distance.
- 15() Inst. No. 931271 record bearing and distance.
- 16() Inst. No. 20211073 record bearing and distance.
- 17() Inst. No. 20082785 record bearing and distance.
- 18() Highway Drawing No. 6B-20-5
- 19() Partition No. 2021-08 record bearing and distance for Parcel 2.

NOTE: The dimensions shown for Parcel 1 are identical with the record dimensions shown on Land Partition No. 2021-08.

I do hereby certify that this is a true and exact copy of original Land Partition plat.
Jack L. Watson
Jack Watson, PLS

Detail
Scale 1"=100'



BASIS OF BEARINGS

Scale 1"=100'
Survey No. 2055
Between found ODOT pin near Initial Point and the East corner of Parcel 3, LP 98-24

REGISTERED PROFESSIONAL LAND SURVEYOR
Jack L. Watson
OREGON
SEPT 19, 1995
JACK L. WATSON
2734
Renewal Date 6/30/2022

Position determined in Survey No. 2154

