

# LAND PARTITION PLAT NO. 2022 - 06

A RE-PLAT OF PARCEL 1 AND PARCEL 2 OF LAND PARTITION NO. 2021-08  
SITUATED IN THE SW1/4 AND THE NW1/4 SECTION 1  
T9S, R27E, W.M.

TOWN OF MONUMENT  
GRANT COUNTY, OREGON

May 4, 2022

Sheet 6 of 7

Point being 216.30 North  
and 2104.79 West of the  
C1/4 corner of Sec. 1

**Detail A**  
30' wide public access & utility  
easement, Inst. No. 993561 & 20210813  
Scale 1"=200'

30' wide public access & utility  
easement, Inst. No. 993561 & 20210813

**Parcel 1**

**Detail B**  
20' wide private access  
easement, Inst. No. 092160  
Scale 1"=200'

Point being N79°53'24"W, 1779.50  
and S46°03'W, 78.14 ft from  
the C1/4 corner of Section 1

25' wide private access  
easement, Inst. No. 092160

**Parcel 1**

**Detail C**  
20' wide private access  
easement, Inst. No. 20210813  
Scale 1"=200'

Edge of Existing  
asphalt

20' wide private access & utility  
easement, Inst. No. 20210813

**Parcel 1**

**Detail D**

Public utility easement 20 ft wide,  
Instrument No. 993561 & 20210813

Public access easement 25 ft wide,  
Instrument No. 993088 & 20210813

Boundary of Instrument No. 993088

Scale 1"=200' 1(N12°34'00"E 55.00)

Public utility easement 20 ft wide,  
10 ft each side of  $\odot$  see Instrument No.  
No. 993561 & 20210813.  $\odot$  point being  
205.84 ft. North & 1722.09 ft. West  
of the C1/4 corner of Section 1.

See Detail  
25' wide public access  
easement, Inst. No. 993088  
& 20210813.

Inst. No. 993088

Point being 13.14 North  
and 1435.16 West of the  
C1/4 corner of Sec. 1.

BOUNDARY INST NO. 993088  
DEED RECORD

Course	Bearing	Distance
L12	S24°18'36"E	19.83
L13	S58°00'00"E	17.00
L14	N88°18'36"E	19.83
L15	N32°00'00"E	25.00
L16	N58°00'00"W	50.00
L17	S32°00'00"W	25.00

**Detail**  
Scale 1"=50'

CENTERLINE PUBLIC ACCESS EASEMENT  
25 FT WIDE INST. NO. 993088 & 20210813  
DEED RECORD

Course	Bearing	Distance
L8	S58°00'00"E	131.02
L9	S57°15'00"E	185.00
L10	S60°35'00"E	81.50
L11	S72°30'00"E	60.74

SOUTH BOUNDARY OF A 20' WIDE  
PRIVATE ACCESS & UTILITY EASEMENT  
INST. NO. 20210813

Course	Bearing	Distance
L18	N74°40'00"W	30.00
L19	N65°30'00"W	48.00
L20	N61°00'00"W	44.00
L21	N58°10'00"W	115.00
L22	N57°25'00"W	180.00
L23	N58°50'00"W	60.00
L24	N64°36'00"W	110.00
L25	N61°40'00"W	40.00
L26	N57°00'00"W	50.00
L27	N54°00'00"W	60.00
L28	N51°30'00"W	60.74

Curve	Radius	Length	Delta	Chord	Chord Bear.
C2	190.00	94.51	28°30'00"	93.54	N65°45'00"W

REGISTERED  
PROFESSIONAL  
LAND SURVEYOR

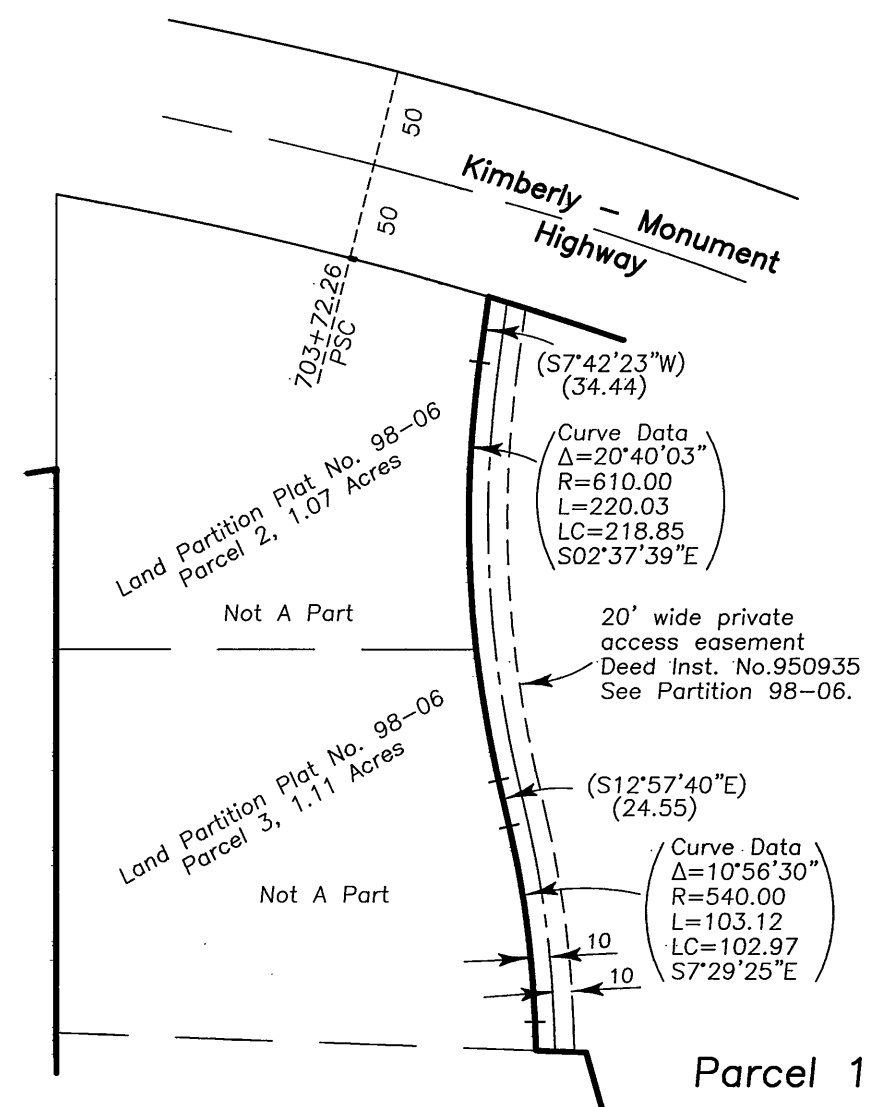
*Jack L. Watson*  
OREGON  
SEPT 19, 1995  
JACK L. WATSON  
2734

Renewal Date 6/30/2022

**Detail E**

Private access easement 20 ft wide,  
Instrument No. 950935

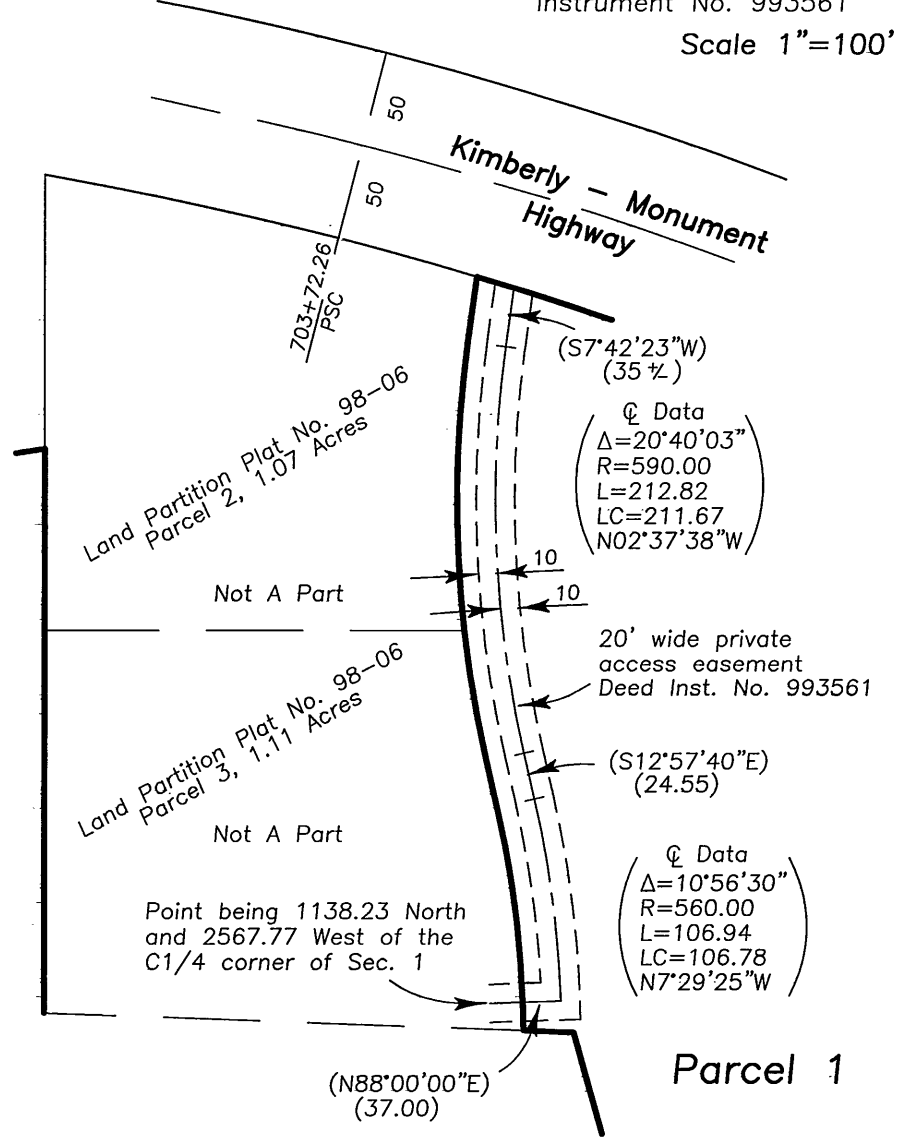
Scale 1"=100'



**Detail F**

Private access easement 20 ft wide,  
Instrument No. 993561

Scale 1"=100'



I do hereby certify that this is a true and exact  
copy of original Land Partition plat.

*Jack L. Watson*  
Jack Watson, PLS