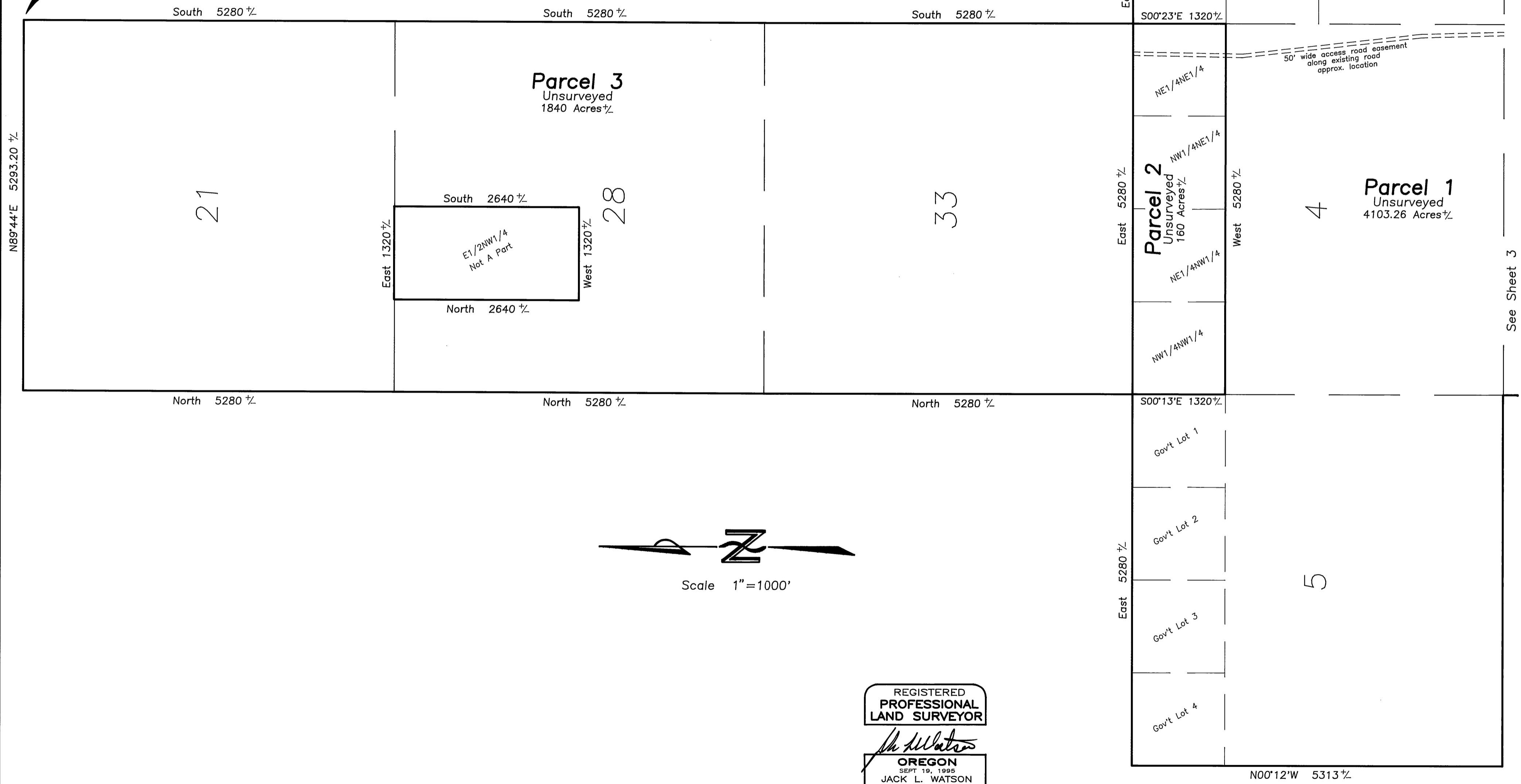


LAND PARTITION PLAT NO. 99-21

SITUATED IN THE NE1/4, SE1/4, SW1/4, & NW1/4 OF SECTIONS 21 & 28 & 33, T12S, R29E
 IN THE SW1/4 & NW1/4 OF SECTION 3, IN THE NE1/4, SE1/4, SW1/4, & NW1/4 OF
 SECTIONS 4 & 5 & 9, IN THE SW1/4 & NW1/4 OF SECTION 10, IN THE SW1/4 & NW1/4 OF
 SECTION 15, IN THE NE1/4, SE1/4, SW1/4 & NW1/4 OF SECTIONS 16 & 17, IN THE SW1/4
 & NW1/4 OF SECTION 22, IN THE NE1/4, SE1/4, SW1/4 & NW1/4 OF SECTION 21, T13S, R29E, W.M.
 GRANT COUNTY, OREGON
 September 21, 1999

Initial Point



REGISTERED
PROFESSIONAL
LAND SURVEYOR

Jack L. Watson

OREGON
SEPT 19, 1995
JACK L. WATSON
2734
Renewal Date 6/30/2000

See Sheet 3