

Canyon Mountain Heights

SITUATED IN THE SE1/4 AND IN THE SW1/4
AND IN THE NW1/4 OF SECTION 35
T13S, R31E, W.M.

TOWN OF CANYON CITY
GRANT COUNTY, OREGON

Sheet 2 of 5



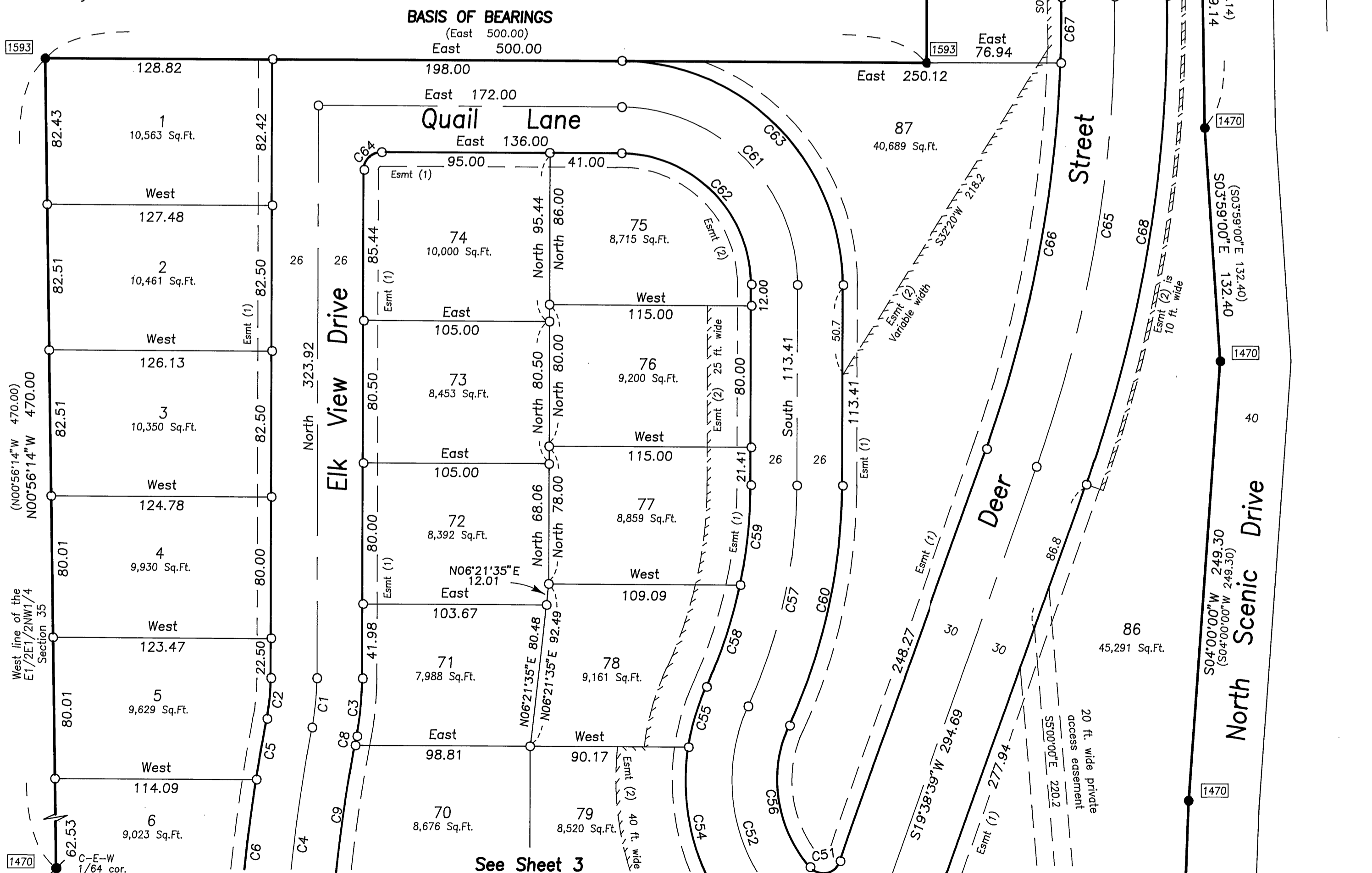
Scale 1"=50'

BASIS OF BEARINGS
Survey No. 1593

REGISTERED
PROFESSIONAL
LAND SURVEYOR

Jack L. Watson
OREGON
SEPT 19, 1995
JACK L. WATSON
2734

Renewal Date 6/30/2002



CURVE TABLE

CURVE	RADIUS	LENGTH	DELTA	CHORD	LC BEARING
C1	150.00	28.02	10°42'05"	27.98	S05°21'03"W
C2	124.00	23.16	10°42'05"	23.13	S05°21'03"W
C3	176.00	32.87	10°42'05"	32.82	S05°21'03"W
C4	1000.00	186.77	10°42'05"	186.50	S05°21'03"W
C5	1026.00	34.98	1°57'12"	34.98	S09°43'29"W
C6	1026.00	83.97	4°41'22"	83.95	S06°24'12"W
C7	1026.00	72.67	4°03'30"	72.66	S02°01'45"W
C8	974.00	5.41	0°19'06"	5.41	S10°32'32"W
C9	974.00	83.32	4°54'05"	83.30	S07°55'56"W
C10	974.00	75.14	4°25'13"	75.12	S03°16'17"W
C11	974.00	18.04	1°03'41"	18.04	S00°31'51"W
C12	1000.00	87.27	5°00'00"	87.24	S02°30'00"E
C13	1026.00	77.01	4°18'02"	76.99	S02°09'00"E
C14	1026.00	12.53	0°41'58"	12.52	S04°39'01"E
C15	974.00	16.10	0°56'50"	16.10	S00°28'25"E
C16	974.00	68.90	4°03'10"	68.88	S02°58'25"E
C17	300.00	185.51	35°25'46"	182.57	S12°42'53"W
C18	274.00	7.11	1°29'09"	7.11	S04°15'26"E
C19	274.00	81.54	17°03'01"	81.24	S05°00'39"W
C20	274.00	80.79	16°53'36"	80.50	S21°58'58"W
C21	326.00	47.91	8°25'15"	47.87	S00°47'23"E
C22	326.00	82.43	14°29'15"	82.21	S10°39'52"W
C23	326.00	71.24	12°31'16"	71.10	S24°10'08"W
C24	300.00	295.46	56°25'46"	283.67	S02°12'53"W
C25	326.00	10.04	1°45'51"	10.04	S29°32'51"W
C26	326.00	224.98	39°32'27"	220.54	S08°53'42"W
C27	326.00	86.05	15°07'28"	85.81	S18°26'16"E
C28	274.00	17.46	3°39'04"	17.46	S18°36'14"W
C29	274.00	152.20	31°49'34"	150.25	S10°51'55"W
C30	274.00	100.20	20°57'08"	99.64	S15°31'26"E
C31	425.00	163.19	22°00'00"	162.19	S15°00'00"E
C32	399.00	73.81	10°35'57"	73.71	S20°42'01"E
C33	399.00	79.39	11°24'03"	79.26	S09°42'01"E
C34	451.00	22.25	2°49'37"	22.25	S24°35'12"E
C35	451.00	77.48	9°50'34"	77.38	S18°15'06"E
C36	451.00	73.44	9°19'49"	73.36	S08°39'55"E
C37	10.00	15.71	90°00'00"	14.14	S45°00'00"E
C38	10.00	15.71	90°00'00"	14.14	S45°00'00"W
C39	100.00	78.44	44°56'40"	76.45	S67°31'40"W
C40	70.00	54.91	44°56'40"	53.51	S67°31'40"W
C41	130.00	34.36	15°08'35"	34.26	S82°25'43"W
C42	130.00	67.62	29°48'05"	66.86	S59°57'22"W
C43	100.00	78.64	45°03'20"	76.63	S22°31'40"W
C44	70.00	55.05	45°03'20"	53.64	S22°31'40"W
C45	130.00	67.74	29°51'13"	66.97	S30°07'44"W
C46	130.00	34.49	15°12'07"	34.39	S07°36'03"W
C47	100.00	34.29	19°38'39"	34.12	S09°49'20"W
C48	130.00	44.57	19°38'39"	44.35	S09°49'19"W
C49	70.00	24.00	19°38'39"	23.88	S09°49'19"W
C50	10.00	13.42	76°54'15"	12.44	S18°48'28"E
C51	10.00	20.73	118°46'57"	17.21	N79°02'07"E
C52	100.00	150.80	86°24'01"	136.91	S18°34'11"E
C53	126.00	58.44	26°34'20"	57.91	S43°58'26"E
C54	126.00	85.74	38°59'26"	84.10	S11°11'33"E
C55	126.00	35.91	16°19'40"	35.79	S16°28'00"W
C56	74.00	85.51	66°12'14"	80.83	S08°28'17"E
C57	300.00	128.97	24°37'50"	127.97	S12°18'55"W
C58	274.00	60.78	12°42'38"	60.66	S18°16'31"W
C59	274.00	57.00	11°55'12"	56.90	S05°57'36"W
C60	326.00	140.14	24°37'50"	139.07	S12°18'55"W
C61	100.00	157.08	90°00'00"	141.42	S45°00'00"E
C62	74.00	116.24	90°00'00"	104.65	S45°00'00"E
C63	126.00	197.92	90°00'00"	178.19	S45°00'00"E
C64	10.00	15.71	90°00'00"	14.14	N45°00'00"E
C65	750.00	270.89	20°41'39"	269.42	S09°17'49"W
C66	720.00	222.93	17°44'25"	222.04	S10°46'27"W
C67	720.00	37.12	2°57'14"	37.12	S00°25'37"W
C68	780.00	281.72	20°41'39"	280.19	S09°17'49"W
C69	100.00	77.41	44°21'12"	75.49	S21°07'36"W
C70	130.00	100.63	44°21'12"	98.14	S21°07'36"W
C71	70.00	54.19	44°21'12"	52.84	S21°07'36"W
C72	7.00	9.99	81°47'12"	9.17	S02°24'36"W
C73	100.00	59.69	34°12'00"	58.81	S21°23'00"E
C74	130.00	79.84	35°11'23"	78.59	S20°53'19"E